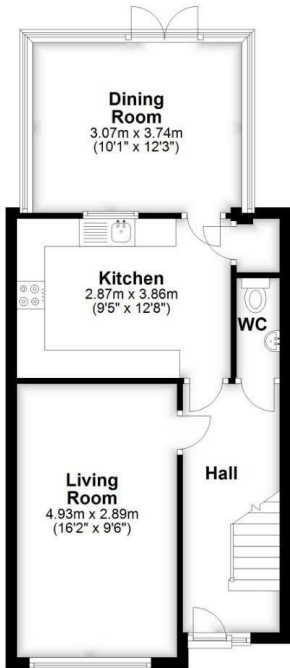
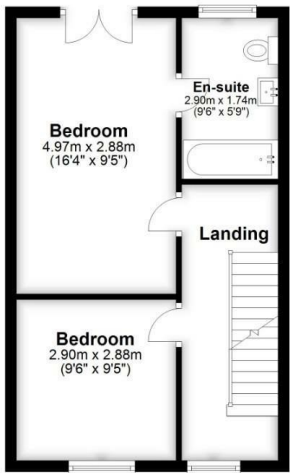


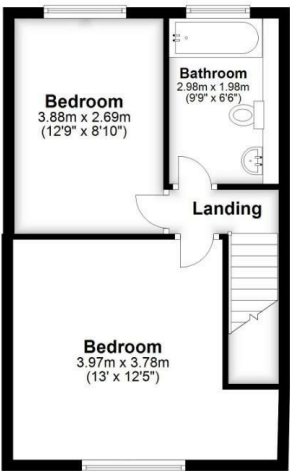
Ground Floor
Approx. 48.5 sq. metres (521.5 sq. feet)



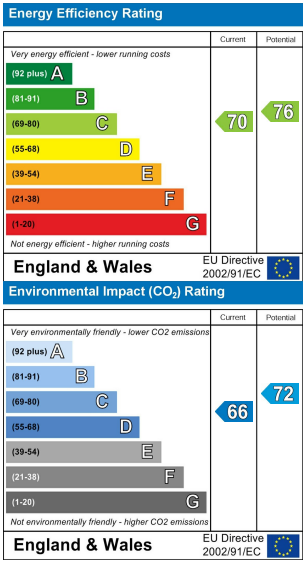
First Floor
Approx. 37.6 sq. metres (404.8 sq. feet)



Second Floor
Approx. 38.0 sq. metres (409.0 sq. feet)



Total area: approx. 124.1 sq. metres (1335.3 sq. feet)



SOUTHHOLME CLOSE
CRYSTAL PALACE
Offers Over £600,000



rightmove.co.uk
The UK's number one property website

Zoopla.co.uk

PrimeLocation.com

onTheMarket.com

Anthony Martin
Estate Agents

020 8303 3338
bexleyheath@anthonymartin.co.uk
www.anthonymartin.co.uk

2 Pickford Lane, Bexleyheath, Kent, DA7 4QW

IMPORTANT: we would like to inform prospective purchasers that these sales particulars have been prepared as a general guide only. A detailed survey has not been carried out, nor the services, appliances and fittings tested. Room sizes should not be relied upon for furnishing purposes and are approximate. If floor plans are included, they are for guidance only and illustration purposes only and may not be to scale. If there are any important matters likely to affect your decision to buy, please contact us before viewing the property.

Anthony Martin
Estate Agents



In the heart of Crystal Palace is this charming and spacious 1980s built terrace townhouse. Located in a peaceful cul de sac and close to Harris Academy Secondary School along with Crystal Palace High Street and train station.

The abode boasts four double sized bedrooms over the first and second floors. With an en-suite off one of the first floor bedrooms. And the main family bathroom on the second floor. Whilst on the ground floor off the hallway is the sizeable lounge followed by the fitted kitchen dining room as well as a stylish conservatory and separate cloakroom. Externally to the rear is a secluded and well maintained south facing garden. To the front is a paved driveway for up to two vehicles.

Call Anthony Martin Estate Agents today to view. EPC rating C.

4 BEDROOMS • 2 RECEPTION ROOMS • 3 BATHROOMS

SOUTHHOLME CLOSE

CRYSTAL PALACE

- Extended 1980s Terrace Townhouse
- Four Double Bedrooms
- Two Large Receptions
- Fitted Kitchen Diner
- Separate Bathroom, En-Suite & D.S Cloakroom
- South Facing & Secluded Rear Garden
- Driveway For Two Vehicles
- Near Harris Academy School
- Floor Area: 1335 sq ft
- EPC Rating: C

