

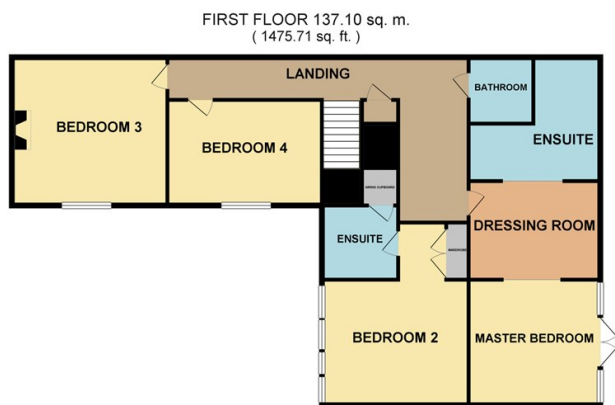


Hall Barn, Hall Farm Drive, Methwold, Norfolk, IP26 4PN

Grand and contemporary barn conversion, finished to a high standard, set in an idyllic and peaceful location. Feature stunning open plan kitchen diner, with huge vaulted ceiling living room. Master bedroom with field views, dressing room and dream en-suite. Two further bathrooms, three further bedrooms ****CHAIN FREE****

- Grand and contemporary barn conversion
- set in an idyllic and peaceful location
- stunning open plan kitchen diner
- huge vaulted ceiling living room
- Full of charm and character
- Master bedroom with field views, dressing room and dream ensuite
- ****FLEXIBLE TERMS**** VIEW NOW
- South facing garden
- Range of bespoke made fitted wardrobes with dressing table and drawers
- Village with playing field, shops and pub

£2,700



TOTAL FLOOR AREA : 338.69 sq. m. (3645.59 sq. ft.) approx.

Whilst every attempt has been made to ensure the accuracy of the floorplan contained here, measurements of doors, windows, rooms and any other items are approximate and no responsibility is taken for any error, omission or mis-statement. This plan is for illustrative purposes only and should be used as such by any prospective purchaser. The services, systems and appliances shown have not been tested and no guarantee as to their operability or efficiency can be given.
Made with Metropix 6/2022

| Energy Efficiency Rating | | |
|---|-------------------------|-----------|
| | Current | Potential |
| Very energy efficient - lower running costs | | |
| (92 plus) A | | |
| (81-91) B | | |
| (69-80) C | | |
| (55-68) D | | |
| (39-54) E | | |
| (21-38) F | | |
| (1-20) G | | |
| Not energy efficient - higher running costs | | |
| England & Wales | EU Directive 2002/91/EC | |