

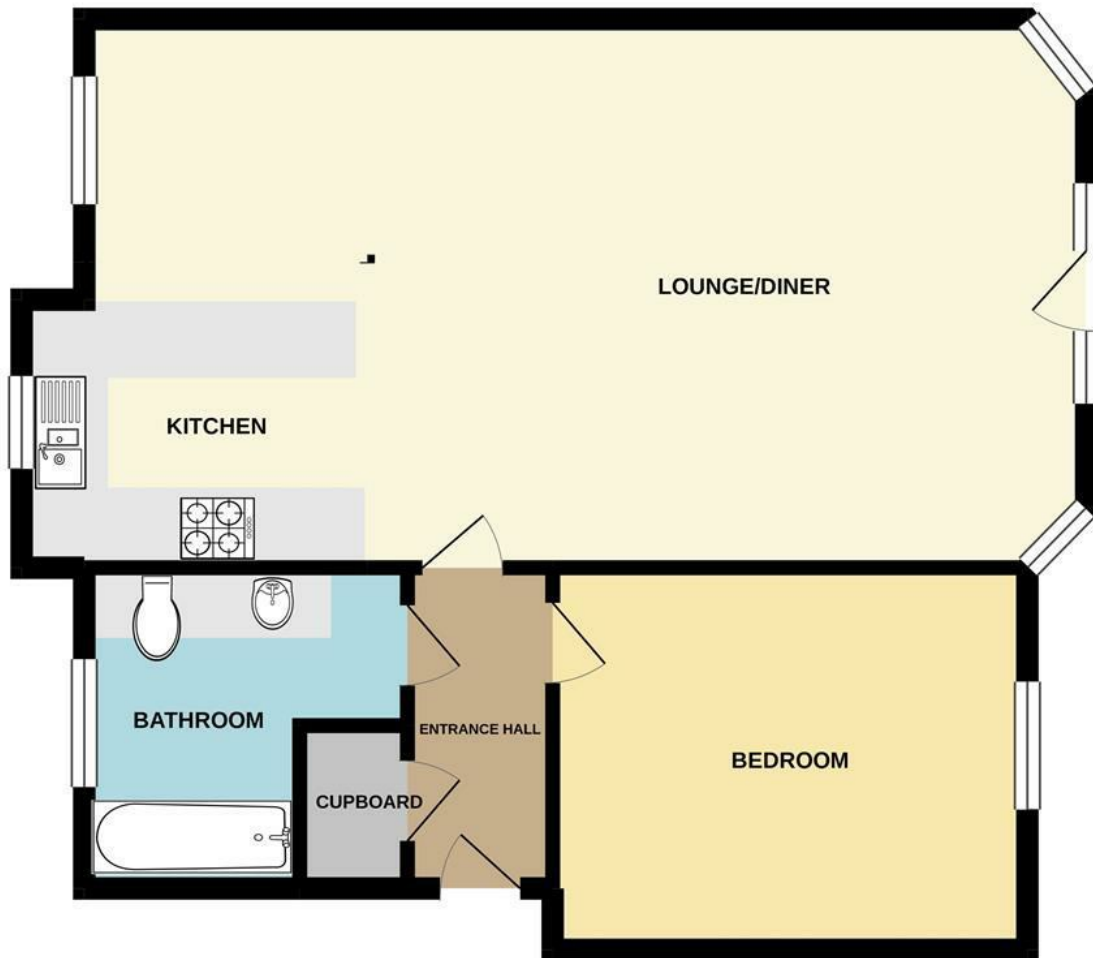


Flat 15, Kingswear Court, Lowestoft, Suffolk, NR33 0AR

**** STUNNING SEA VIEWS **** This 1 bedroom apartment is situated just walking distance from Lowestoft's award winning beach! Boasting an entrance hall, OFF ROAD PARKING and OPEN PLAN living area!

- Stunning sea views
- Off road parking
- Spacious open plan living area
- Juliette balcony
- EPC Rating: B83
- Popular South Lowestoft location
- Close to local amenities
- White goods included
- Beautifully presented throughout
- Double bedroom

£160,000



Whilst every attempt has been made to ensure the accuracy of the floorplan contained here, measurements of doors, windows, rooms and any other items are approximate and no responsibility is taken for any error, omission or mis-statement. This plan is for illustrative purposes only and should be used as such by any prospective purchaser. The services, systems and appliances shown have not been tested and no guarantee as to their operability or efficiency can be given.
Made with Metropix ©2022

Energy Efficiency Rating		
	Current	Potential
Very energy efficient - lower running costs		
(92 plus) A		
(81-91) B	83	83
(69-80) C		
(55-68) D		
(39-54) E		
(21-38) F		
(1-20) G		
Not energy efficient - higher running costs		
England & Wales		EU Directive 2002/91/EC