

£880,000
Asking Price



Flixton Road

Flixton, NR32 5PB

- Three semi-detached character homes included in the sale
- Charming period details throughout including sash windows, original fireplaces, and exposed floorboards
- Multiple reception rooms and well-appointed kitchens and bathrooms
- Five to six double bedrooms total (one en-suite), plus an additional single bedroom
- Spacious wraparound gardens, each with west or south-west facing rear aspect
- Ample off-road parking via gated driveways
- Open field views and complete rear privacy
- Desirable semi-rural location between Somerleyton & Lowestoft
- Offered chain-free
- Extension and development potential (subject to planning permission)





Location

Ideally located between the highly regarded village of Somerleyton and the coastal town of Lowestoft, this collection of homes offers the perfect mix of tranquil countryside living and convenient access to local amenities, schools, and transport links. Nearby walking routes, nature reserves, and rural views make this a highly desirable location for those seeking both lifestyle and investment value.

Number 1

Number 1 offers two spacious double bedrooms, including a master with its own en-suite shower room. Downstairs, you'll find two bright and character-filled reception rooms with original fireplaces, a modern kitchen, and a well-appointed bathroom. The house benefits from a generous rear garden with open field views and fantastic potential to extend, subject to planning permission.

Number 2

Number 2 features three bedrooms—two doubles and one single—alongside stylishly modernised interiors and tasteful décor throughout. The ground floor comprises a spacious sitting room and dining room with laminate flooring, a smart kitchen, and an updated family bathroom. Outside, a wraparound garden, mature planting, and a gated driveway complete the offering, making it ideal for families or lettings.



Number 4

Number 4 is another well maintained two-bedroom home, enhanced by two bathrooms including an en-suite. Retaining its period character with exposed floorboards and sash windows, the home offers a charming blend of old and new. The large lawned garden to the rear provides full privacy and uninterrupted countryside views, with excellent potential for future development (STP).

Outside

All three properties benefit from private gated access and ample off-road parking, with generous front and rear gardens framed by mature trees and fencing for privacy. The south-west and west-facing rear aspects ensure sunny afternoons, and the open countryside views create a truly idyllic setting. Each home sits on a spacious plot, offering room to extend, reconfigure, or further develop subject to planning.

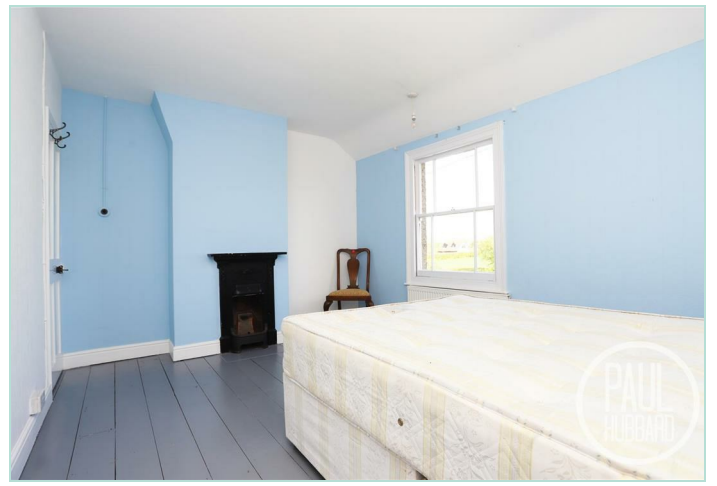
Financial Services

If you would like to know if you can afford this property and how much the monthly repayments would be, Paul Hubbard Estate Agents can offer you recommendations on financial/mortgage advisors who will search for the best current deals for first time buyers, buy to let investors, upsizers and relocators. Call or email in today to arrange your free, no obligation quote.







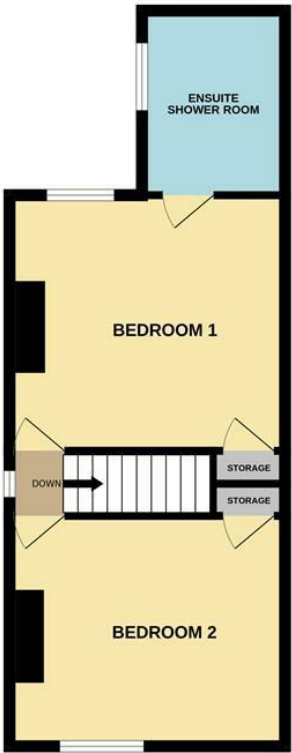
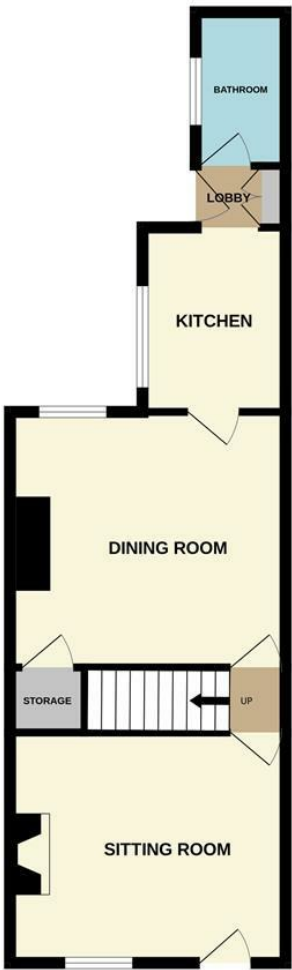


Tenure: Freehold
Council Tax Band: B
EPC Rating: E
Local Authority: East Suffolk Council

Energy Efficiency Rating		
	Current	Potential
Very energy efficient - lower running costs		
(92 plus) A		
(81-91) B		
(69-80) C		
(55-68) D		65
(39-54) E	42	
(21-38) F		
(1-20) G		
Not energy efficient - higher running costs		
England & Wales		EU Directive 2002/91/EC

GROUND FLOOR

1ST FLOOR



Whilst every attempt has been made to ensure the accuracy of the floorplan contained here, measurements of doors, windows, rooms and any other items are approximate and no responsibility is taken for any error, omission or mis-statement. This plan is for illustrative purposes only and should be used as such by any prospective purchaser. The services, systems and appliances shown have not been tested and no guarantee as to their operability or efficiency can be given.
Made with Metropix ©2025

Paul Hubbard Estate Agents
178-180 London Road South
Lowestoft
Suffolk
NR33 0BB

Contact Us
www.paulhubbardonline.com
01502 531218
info@paulhubbardonline.com

Agents Note: Whilst every care has been taken to prepare these sales particulars, they are for guidance purposes only. All measurements are approximate are for general guidance purposes only and whilst every care has been taken to ensure their accuracy, they should not be relied upon and potential buyers are advised to recheck the measurements