



17 Johnsons Way, Leiston, IP16 4WW

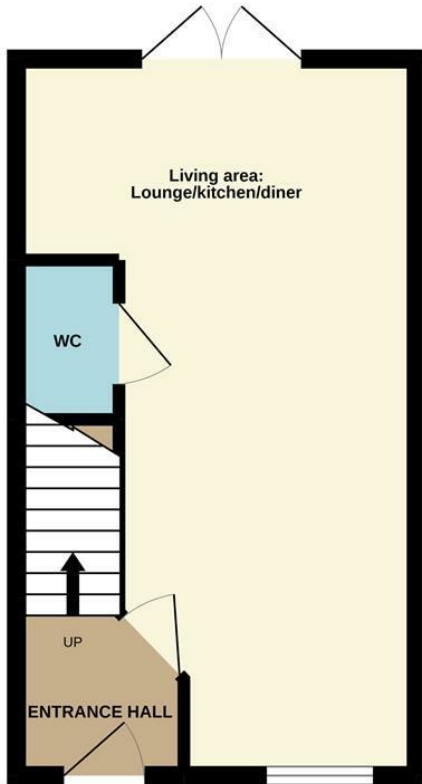
GUIDE PRICE £220,000 - £230,000

**** STUNNING NEW BUILD WITH TWO DOUBLE BEDROOMS **** This ideal property boasts open plan living, modern kitchen and bathroom along with 2 allocated parking spaces plus ample off road parking!

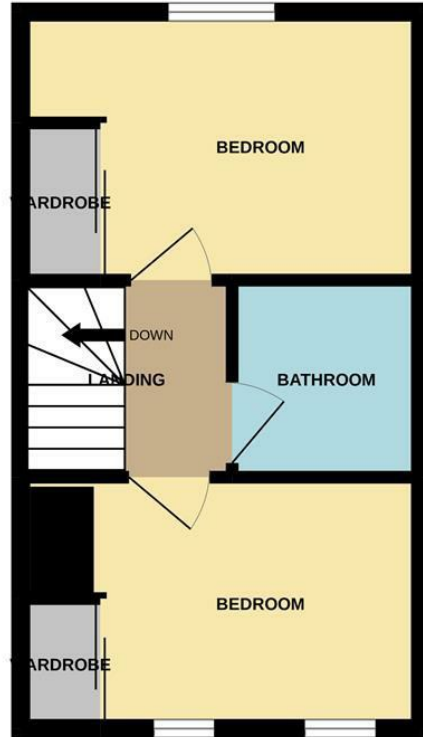
- Stunning new build
- Two double bedrooms
- Two allocated parking spaces
- Open plan lounge/diner
- Gas central heating
- Ground floor WC
- Ideal for public transport links
- Close to local amenities
- Entrance hall
- Modern kitchen and bathroom

£220,000

GROUND FLOOR



1ST FLOOR



Whilst every attempt has been made to ensure the accuracy of the floorplan contained here, measurements of doors, windows, rooms and any other items are approximate and no responsibility is taken for any error, omission or mis-statement. This plan is for illustrative purposes only and should be used as such by any prospective purchaser. The services, systems and appliances shown have not been tested and no guarantee as to their operability or efficiency can be given.
Made with Metropix ©2022

Energy Efficiency Rating		
	Current	Potential
<i>Very energy efficient - lower running costs</i>		
(92 plus) A		
(81-91) B		
(69-80) C		
(55-68) D		
(39-54) E		
(21-38) F		
(1-20) G		
<i>Not energy efficient - higher running costs</i>		
England & Wales	EU Directive 2002/91/EC	