



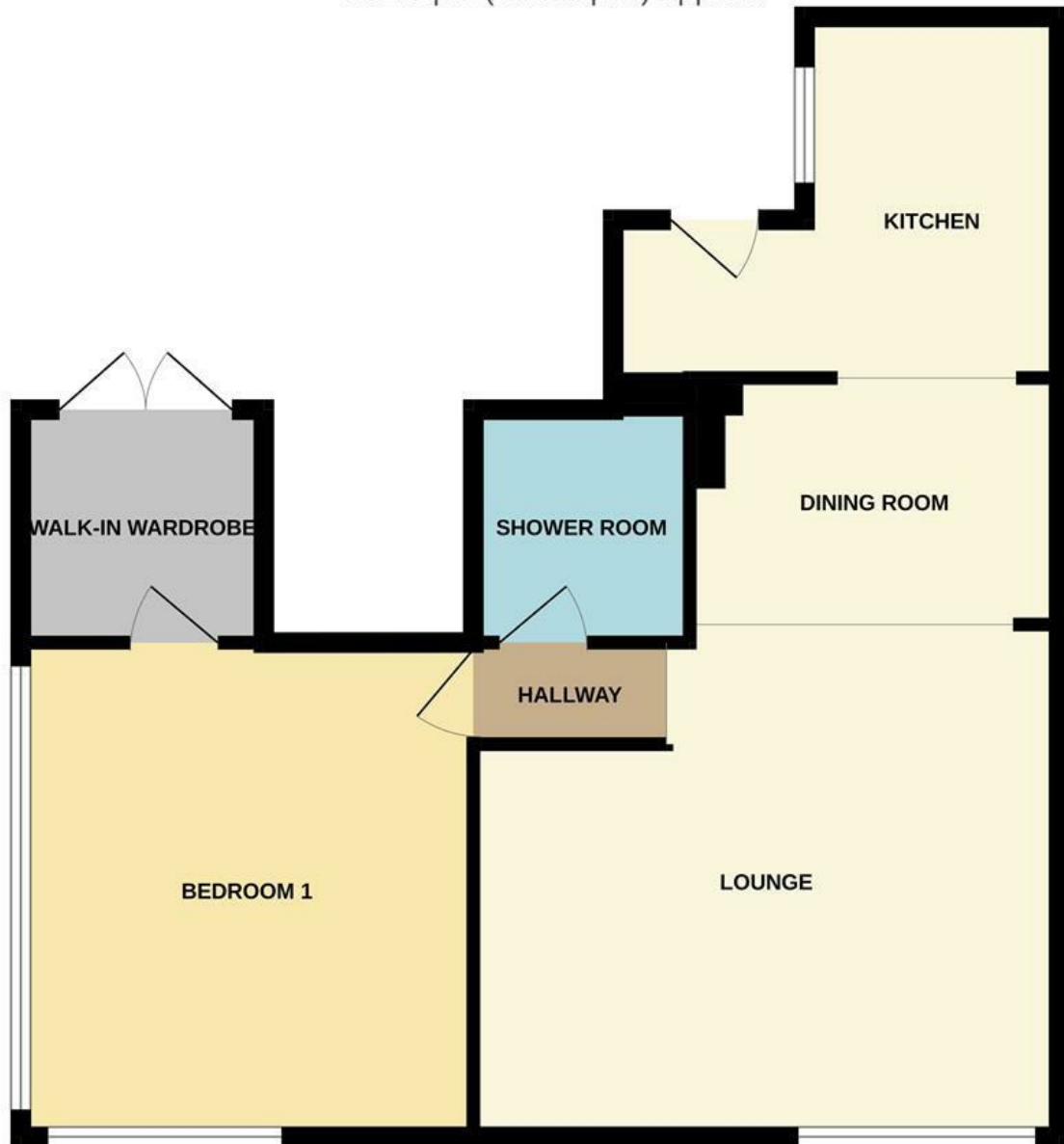
3, Bittern Green, Oulton Broad, Suffolk, NR33 8PH

This ground floor apartment, located in sought-after Oulton Broad, offers a cosy retreat for your holiday. Featuring a comfortable double bedroom, a convenient shower room and off-road parking, it's designed for your convenience. The open-plan living space boasts modern decor and beautiful furnishings throughout, ensuring a comfortable stay. AVAILABLE FROM 1ST MAY 2024 for lets from 1 month + (note - price is inclusive of all utility bills).

- Ground floor apartment
- Set in sought-after Oulton Broad
- Double bedroom
- Shower room
- Off road parking
- Open plan living
- Modern decor throughout
- Beautiful furnishings throughout
- Perfect for a comfortable & convenient stay
- Communal courtyard garden

£2,000 Per Calendar Month

GROUND FLOOR
682 sq.ft. (63.3 sq.m.) approx.



TOTAL FLOOR AREA ; 682 sq.ft. (63.3 sq.m.) approx.

Whilst every attempt has been made to ensure the accuracy of the floorplan contained here, measurements of doors, windows, rooms and any other items are approximate and no responsibility is taken for any error, omission or mis-statement. This plan is for illustrative purposes only and should be used as such by any prospective purchaser. The services, systems and appliances shown have not been tested and no guarantee as to their operability or efficiency can be given.
Made with Metropix ©2023

Energy Efficiency Rating		Current	Potential
<i>Very energy efficient - lower running costs</i>			
(92 plus) A			
(81-91) B			
(69-80) C			
(55-68) D			
(39-54) E			
(21-38) F			
(1-20) G			
<i>Not energy efficient - higher running costs</i>			
England & Wales	EU Directive 2002/91/EC		