



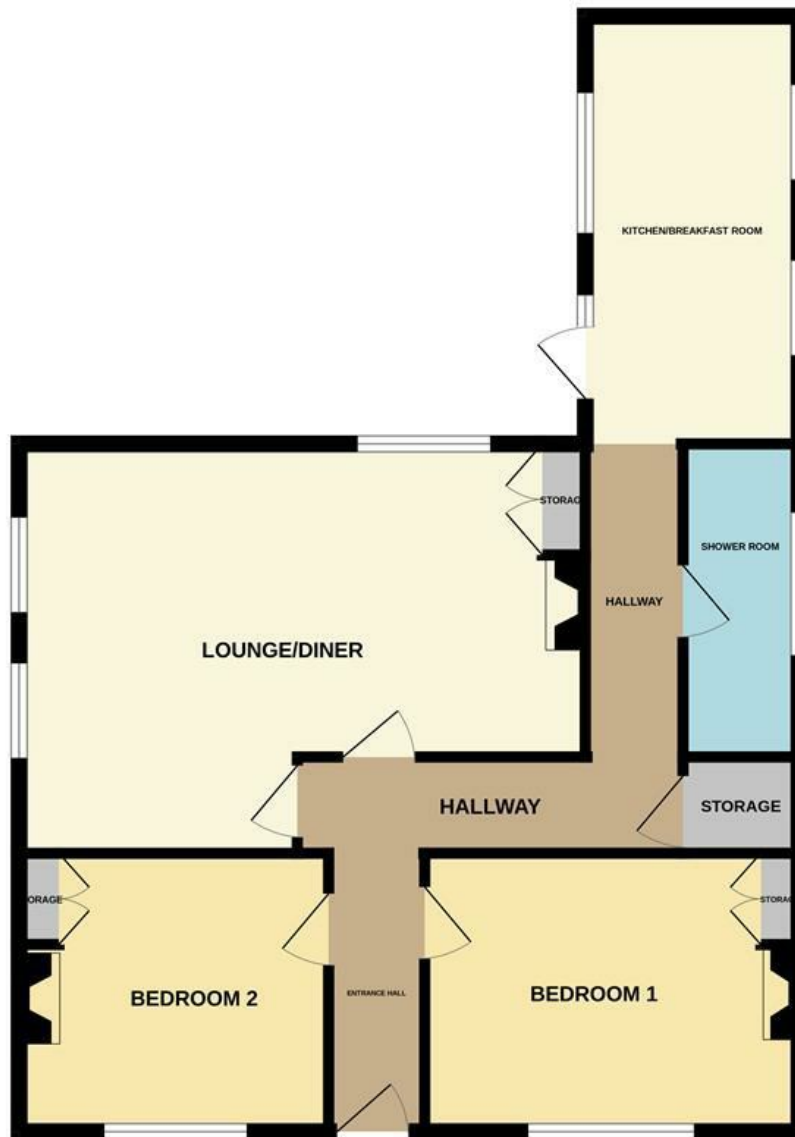
## Dairy Farm Lodge, Camps Heath, Lowestoft, Oulton, Suffolk, NR32 5DW

**\*\*SHORT TERM LET OPPORTUNITY \*\*** With off-road parking, two generously sized double bedrooms, and enchanting period features throughout, it exudes charm and this price includes all bills being paid. The south/west-facing courtyard garden provides a tranquil outdoor oasis in a peaceful rural setting. Inside, modern décor complements the period charm, creating a light and airy feel throughout the property. The spacious lounge/diner is perfect for relaxation and the home comes fully furnished with ample storage space for your convenience, ensuring a comfortable and enjoyable stay. Available now for lets from 1-12 months! **\*\*INCLUDES ALL BILLS AND CLEANING\*\***

- Off road parking
- 2 double bedrooms
- Period features throughout
- South/west facing courtyard garden
- Peaceful rural location
- Modern decor throughout
- Lounge/diner
- Fully furnished
- Ample storage space
- Light & airy feel throughout

**£3,250 Per Calendar Month**

GROUND FLOOR  
750 sq.ft. (69.7 sq.m.) approx.



TOTAL FLOOR AREA : 750 sq.ft. (69.7 sq.m.) approx.

Whilst every attempt has been made to ensure the accuracy of the floorplan contained here, measurements of doors, windows, rooms and any other items are approximate and no responsibility is taken for any error, omission or mis-statement. This plan is for illustrative purposes only and should be used as such by any prospective purchaser. The services, systems and appliances shown have not been tested and no guarantee as to their operability or efficiency can be given.  
Made with Metropix ©2023

Energy Efficiency Rating		Current	Potential
<i>Very energy efficient - lower running costs</i>			
(92 plus) <b>A</b>			
(81-91) <b>B</b>			
(69-80) <b>C</b>			
(55-68) <b>D</b>			
(39-54) <b>E</b>			
(21-38) <b>F</b>			
(1-20) <b>G</b>			
<i>Not energy efficient - higher running costs</i>			
<b>England &amp; Wales</b>	EU Directive 2002/91/EC		