



## 153 Bridge Road, Oulton Broad, Suffolk, NR33 9JU

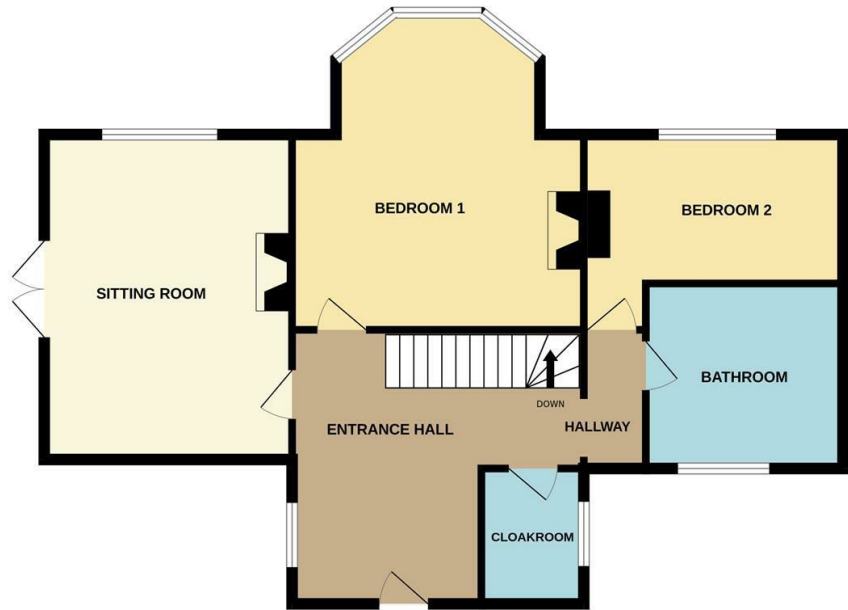
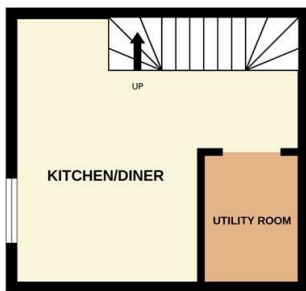
Step into this exquisite apartment in the heart of Oulton Broad. Impeccably designed, it blends classic charm with modern comfort. Enjoy the south-facing courtyard, period features and two double bedrooms. With off-road parking and Nicholas Everitt Park nearby, it's a delightful fusion of old-world elegance and contemporary living. Available for short-term lets and company bookings from 1 month plus. Available Now! £3,000 INC BILLS

- Stunning maisonette nestled in the heart of Oulton Broad
- Meticulously designed with a harmonious blend of classic and contemporary elements
- South-facing courtyard
- Period features throughout
- Two double bedrooms
- Impeccably thought-out living
- A bathroom & cloakroom
- Off road parking
- Walking distance from Nicholas Everitt park
- Spacious entrance hall

**£3,000 Per Calendar Month**

BASEMENT

GROUND FLOOR



Whilst every attempt has been made to ensure the accuracy of the floorplan contained here, measurements of doors, windows, rooms and any other items are approximate and no responsibility is taken for any error, omission or mis-statement. This plan is for illustrative purposes only and should be used as such by any prospective purchaser. The services, systems and appliances shown have not been tested and no guarantee as to their operability or efficiency can be given.  
Made with Metropix ©2023

Energy Efficiency Rating		Current	Potential
<i>Very energy efficient - lower running costs</i>			
(92 plus) <b>A</b>			
(81-91) <b>B</b>			
(69-80) <b>C</b>			
(55-68) <b>D</b>			
(39-54) <b>E</b>			
(21-38) <b>F</b>			
(1-20) <b>G</b>			
<i>Not energy efficient - higher running costs</i>			
<b>England &amp; Wales</b>	EU Directive 2002/91/EC		