



Whittington Road, Brentwood, CM13 1LA
£375,000

Jenkins
Property

This two-bedroom terraced house benefits from both side and rear access and offers a perfect blend of comfort and convenience. Ideal for small families or professionals, the property boasts a well-designed layout that maximises space and light and is extremely well presented throughout.

Upon entering, you are greeted by a welcoming atmosphere that flows throughout this lovely home. The two double bedrooms provide ample room for relaxation complemented by a well-appointed contemporary bathroom.

The heart of the home is undoubtedly the inviting living area, perfect for entertaining guests or enjoying quiet evenings in. The property also features a modern well planned kitchen with space for dining. Externally off road parking is available for two vehicles and the enclosed private rear garden makes a great entertaining space perfect for those longed for summer bbq's.

Local amenities, popular schools and parks all within easy reach make it an ideal spot for those seeking a community feel. With excellent transport links nearby, commuting to London and other surrounding areas is easily reachable and straightforward.

- Two Double Bedrooms
- Modern Kitchen Diner
- Off Street Parking
- Easy access to Station
- Side and Rear Access
- Contemporary Bathroom with Shower
- Close to local shops
- Popular Schools nearby

Entrance Area

Living Room 13'4" x 11'9" (4.06m x 3.58m")

Kitchen Diner 7'10" x 15'2" (2.39m x 4.62m")

Landing

Bedroom One 10' x 14'2" (3.05m x 4.32m")

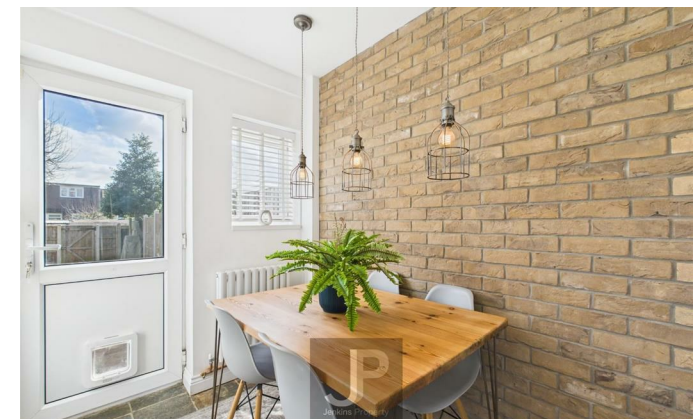
Bedroom Two 11'4" x 10'5" (3.45m x 3.18m")

Rear Garden

Enclosed, side and rear access.

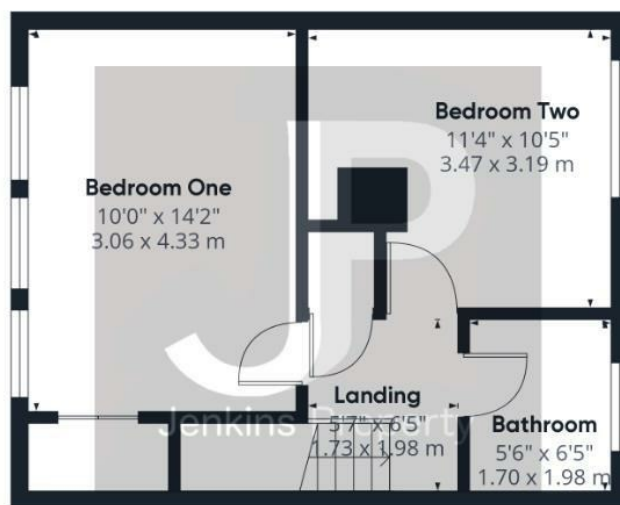
Parking

Off road parking for two vehicles.





Ground Floor



Floor 1



Approximate total area⁽¹⁾
657.56 ft²
61.09 m²

(1) Excluding balconies and terraces

While every attempt has been made to ensure accuracy, all measurements are approximate, not to scale. This floor plan is for illustrative purposes only.

Calculations were based on RICS IPMS 3C standard. Please note that calculations were adjusted by a third party and therefore may not comply with RICS IPMS 3C.

GIRAFFE360

