



The Galleries, Brentwood, CM14 5GF
£400,000

Jenkins
Property

T: 01277228620

E: SALES@JENKINS-PROPERTY.COM

WWW.JENKINS-PROPERTY.COM

*Guide price £400,000 - £425,000 *Charming character apartment located in the Clock Tower, the heart of The Galleries, Warley, Brentwood. This delightful property boasts 2 bedrooms one with ensuite shower room plus guest bathroom and favours a beautiful ground floor position.

Situated in a converted beautiful building surrounded by manicured lawns and gardens, offering a unique living experience that blends modern comforts with historical appeal. The conversion adds a touch of elegance to the property, making it a truly spectacular home. The popular Galleries location has convenient amenities benefiting from Brentwood Station, nearby local shops, gym and beautiful parks, everything you need is close by. The bustling high street offers a variety of dining options, perfect for those who enjoy eating out or grabbing a quick bite to eat with family or friends.

- Ground Floor
- Popular Galleries
- Two Bedroomws
- En-Suite Shower to Master
- High Ceilings
- Located in the Clock Tower
- Close to Station
- Character Features
- End Of Chain

Reception Hallway 6'x 13'10"
(1.83mx 4.22m")

Open Plan Kitchen/Living/Dining
Area 14" x 24" (4.27m' x 7.32m')

Master Bedroom 16' x 13"4"
(4.88m x 3.96m'1.22m')

En--Suite 7'x 4'7" (2.13mx 1.40m")

Bedroom Two 9' x 9'6" (2.74m x 2.90m")

Bathroom 7 x 5'6" (2.13m x 1.68m")

Integral Hall 12' x 3'9" (3.66m x 1.14m")

Exterior

Allocated parking space

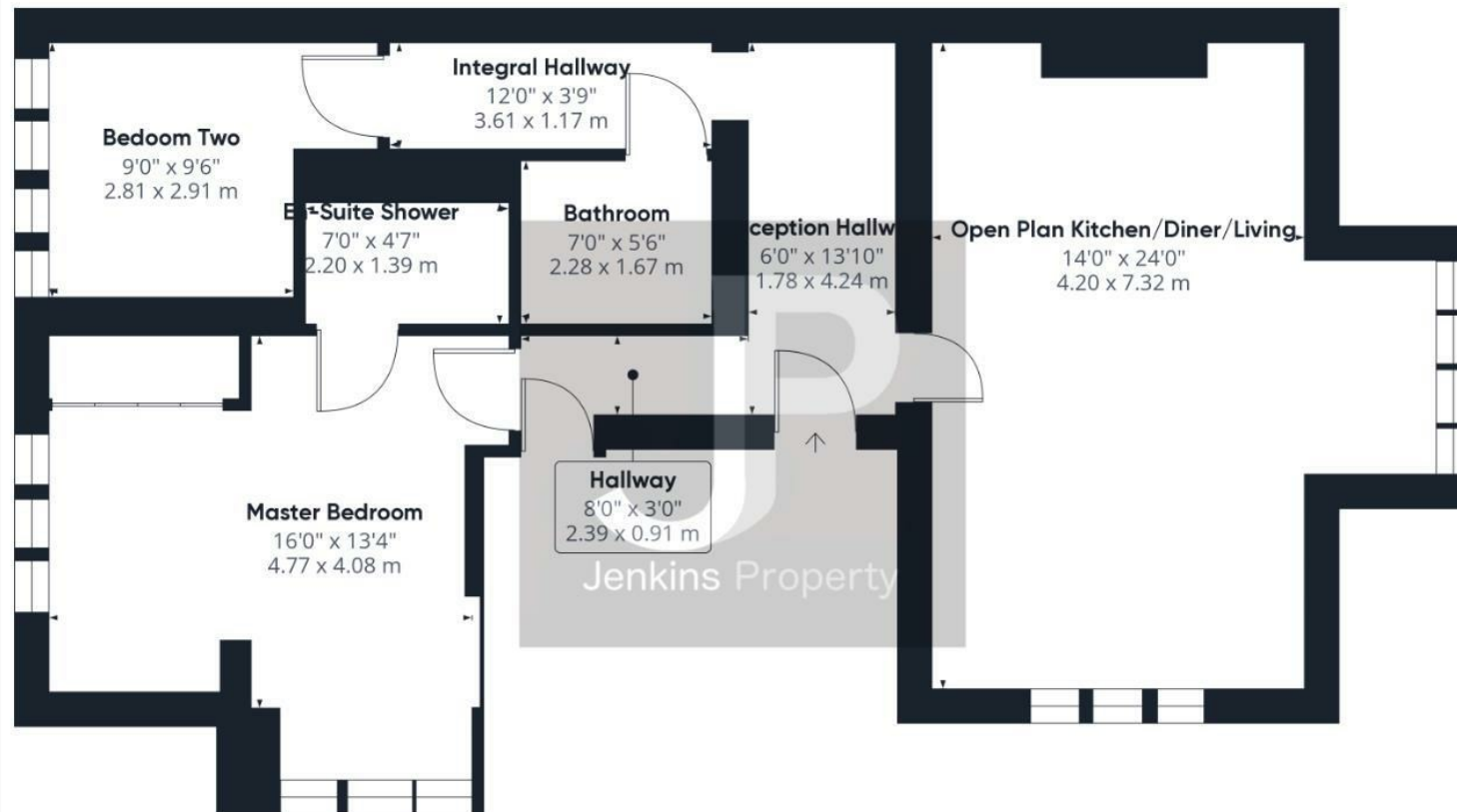
Agents note

The half yearly service charge numbers are £2270 first six months and the second six months of the year £2268.

Ground rent is £250 Pa.

Council tax band E EPC D





Approximate total area⁽¹⁾

933.55 ft²
86.73 m²

(1) Excluding balconies and terraces

While every attempt has been made to ensure accuracy, all measurements are approximate, not to scale. This floor plan is for illustrative purposes only.

GIRAFFE 360

