



Trueloves Lane, Ingatestone. CM4, CM4 0NQ
£739,995

Jenkins
Property

Welcome to this charming property located on Trueloves Lane in Ingatestone! This characterful home boasts 3 bedrooms within a Grade II listed converted coach house, set in a gated private development. Situated in a rural location, this property offers the perfect blend of tranquillity and convenience, with country walks right on your doorstep. With parking space for 2 vehicles, this home provides both historical charm and modern practicality. Don't miss the opportunity to own a piece of history in this idyllic setting.

- Grade II period converted coach house
- En-suite to master bedroom
- Under 1 mile to Ingatestone station
- Private courtyard area
- Utility room
- Three Bedrooms
- Detached Studio / Home Office
- Gated private development
- Study room above bedroom
- Guest cloakroom Wc

[Entrance hallway](#)

[Kitchen diner](#)

[Living room](#)

[Utility room](#)

[Guest cloakroom wc](#)

[First floor hallway](#)

[Master Bedroom](#)

[En-suite](#)

[Bedroom](#)

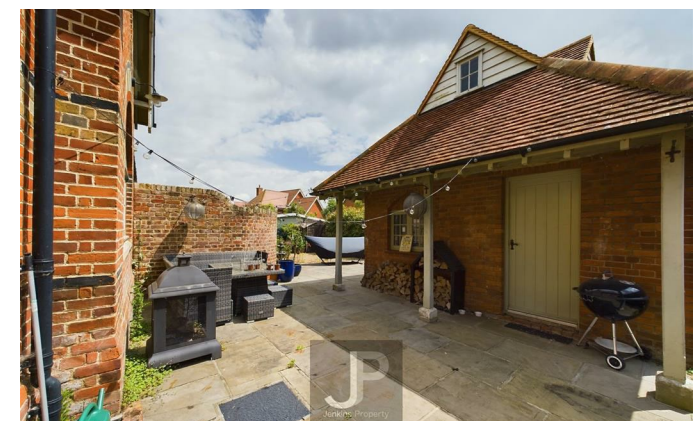
[Bedroom](#)

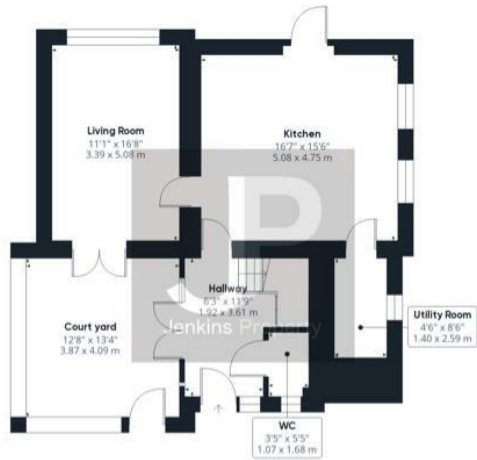
[Bathroom](#)

[2nd floor Study / office above bedroom](#)

[Agents note](#)

There is approx £1000 contribution charge for upkeep of the development

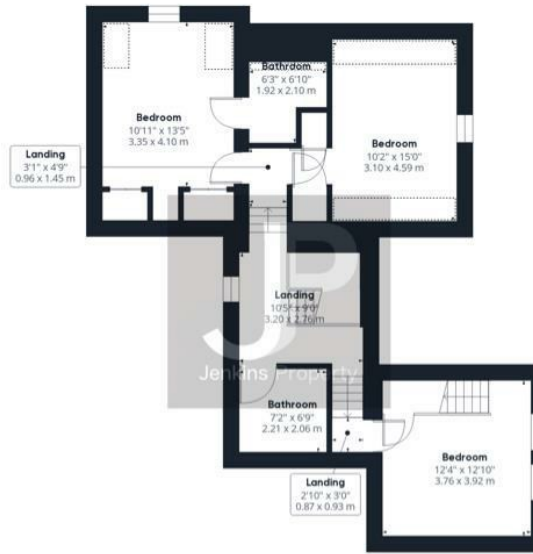




Ground Floor Building 1



Floor 2 Building 1



Floor 1 Building 1



Ground Floor Building 2



Approximate total area⁽¹⁾

1841.67 ft²
171.1 m²

Reduced headroom

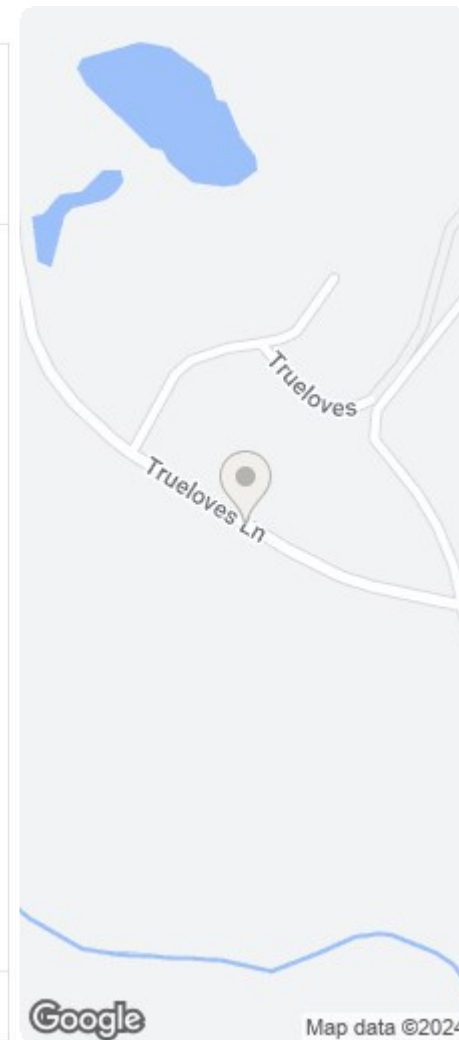
104.08 ft²
9.67 m²

(1) Excluding balconies and terraces

⚠ Reduced headroom
(below 1.5m/4.92ft)

While every attempt has been made to ensure accuracy, all measurements are approximate, not to scale. This floor plan is for illustrative purposes only.

GIRAFFE360



Energy Efficiency Rating		Environmental Impact (CO ₂) Rating	
Current	Target	Current	Target
 69	 78	 A	 C

Not energy efficient - higher running costs
 EU Directive 2002/91/EC
 England & Wales

Not environmentally friendly - lower CO₂ emissions
 EU Directive 2002/91/EC
 England & Wales

