



Nags Head Lane, Brentwood, CM14 5NL
£1,200,000

Jenkins
Property

T: 01277228620

E: SALES@JENKINS-PROPERTY.COM

WWW.JENKINS-PROPERTY.COM

Well positioned in Brentwood for the A127 and sought after schools, with easy access to the Station, this unique, charming, beautifully presented property boasts an impressively spacious total area of 2228.13 square feet, Favours four double bedrooms, with an additional interconnecting bedroom five or dressing room and three receptions and makes a welcoming family home. A second, single-story out building located in the large garden grants additional space featuring its own living room with kitchen area and supplementary storage room. With extensive space and facilities, this property provides a versatile floor plan for personal customisation and requirements.

- Gated Family Residence
- Two En-Suites
- Large Reception Hall
- Play Room/Snug
- Entertaining Room
- Four/Five Bedrooms
- Family Bathroom
- Off Road parking for several Vehicles
- Home Office

Reception Hall 10'5" x 9'10"
(3.18m x 3.00m")

Hallway 16'5" x 6'7" (5.00m x 2.01m")

Ground Floor WC 5'10" x 6'5"
(1.78m x 1.96m)

Kitchen Breakfast Room 16'9" x 10'9" (5.11m x 3.28m")

Living Dining Room 11'11" x 25'9"
(3.63m x 7.85m)

Playroom/Snug 8'1" x 13'11"
(2.46m x 4.24m")

Home Office 8'1" x 11'3" (2.46m x 3.43m")

Landing 17'8" x 6'5" (5.38m x 1.96m")

Master Bedroom 13'11" x 11'8"
(4.24m x 3.56m")

En-Suite 2'10" x 10'7" (0.86m x 3.23m)

Bedroom Two 11'5" x 11'6"
(3.48m x 3.51m")

Inter-connecting Bedroom Five/dressing Room 5'5" x 11'10"
(1.65m x 3.61m)

Bedroom Three 10'10" x 13'1"
(3.30m x 3.99m")

En-Suite 5'6" x 13'1" (1.68m x 3.99m")

Bedroom Four 10'1" x 10'7"
(3.07m x 3.23m")

Family Bathroom 10'1" x 10'7"
(3.07m x 3.23m")

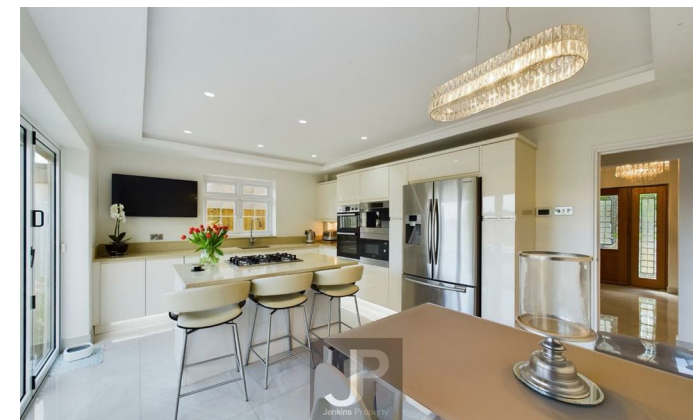
Rear Exterior

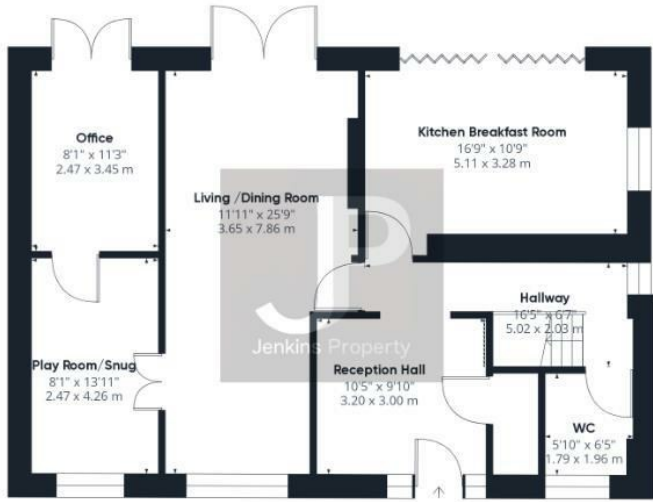
Entertaining Room 19'10"x 14'7"
(6.05m"x 4.45m")

Storage Room 9'11" x 15'1" (3.02m x 4.60m")

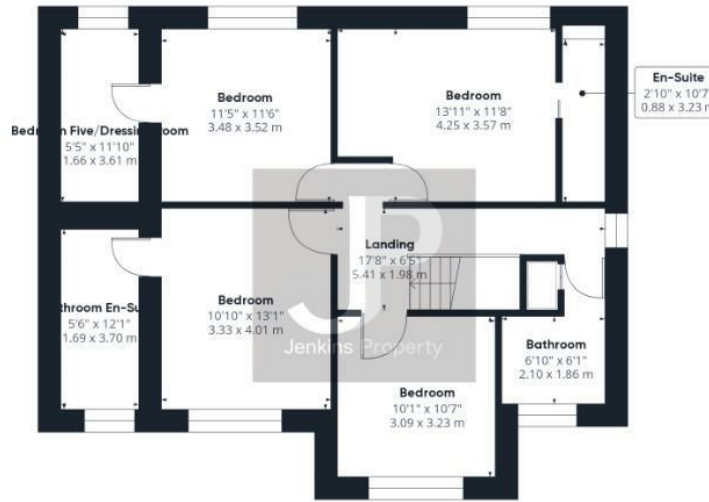
Front Exterior

Off Road parking for several vehicles behind double electronic gates.

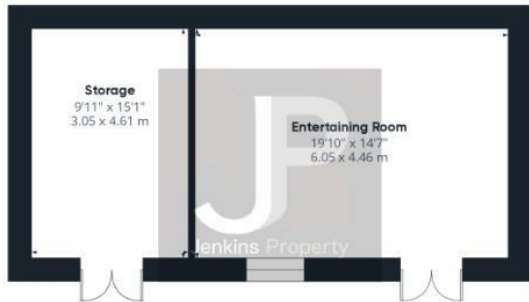




Ground Floor Building 1



Floor 1 Building 1



Ground Floor Building 2



Approximate total area⁽¹⁾

2234.24 ft²
207.57 m²

Reduced headroom

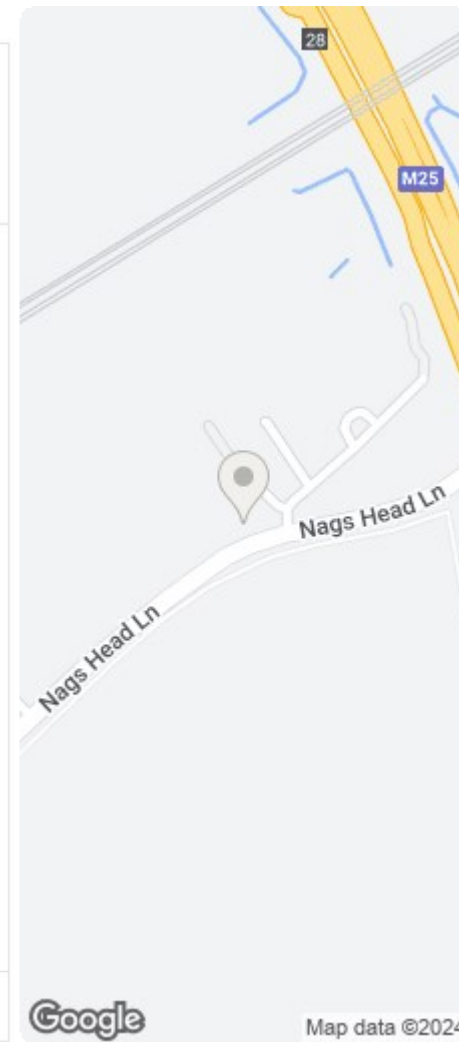
0.5 ft²
0.05 m²

(1) Excluding balconies and terraces

Reduced headroom
(below 1.5m/4.92ft)

While every attempt has been made to ensure accuracy, all measurements are approximate, not to scale. This floor plan is for illustrative purposes only.

GIRAFFE 360



Map data ©2024

Energy Efficiency Rating		Environmental Impact (CO ₂) Rating	
Current	Target	Current	Target
61	77		

Energy Efficiency Rating		Environmental Impact (CO ₂) Rating	
Current	Target	Current	Target
61	77		

England & Wales EU Directive 2002/91/EC

