



Doddinghurst Road, Brentwood, CM15 0SN
£1,400,000

Jenkins
Property

Set in a quiet village location this unique five bedroom property has the benefit of a additional three bedroom detached bungalow within its grounds. This makes it suitable for multiple generations of families to live together or would make an ideal main residence and investment opportunity.

Ground Floor

Hallway 20'11" x 3'10" (6.4 x 1.18)

Open Plan Kitchen / Living Room 26'0" x 25'0" max (7.94 x 7.63 max)

Sunroom 24'2" x 20'7" max (7.39 x 6.29 max)

Bedroom 13'6" x 12'1" (4.13 x 3.69)

Bedroom 14'0" x 9'11" (4.29 x 3.04)

Bathroom 11'4" x 7'1" (3.46 x 2.16)

First Floor

Landing 16'11" x 3'7" (5.18m x 1.11m)

Bedroom 11'6" x 20'11" (3.52m x 6.40m)

Bedroom 17'1" x 10'4" (5.22m x 3.15m)

Bedroom 10'8" x 20'10" (3.26m x 6.37)

Bathroom 9'1" x 6'2" (2.79m x 1.90)

Annex / three bedroom bungalow

Hallway 30'10" x 3'10" (9.40m x 1.18m)

Additional three bedroom detached bungalow in the grounds
 Sunroom 12'8" x 10'11" (3.90m x 3.34m)

Condition with large sunroom on the main house

Bedroom 12'4" x 10'10" (3.76m x 3.32m)

En-suite / Shower room 3'10" x 10'8" (1.18m x 3.26m)

Bedroom 12'6" x 10'10" (3.83m x 3.31m)

Bedroom 13'4" x 10'9" (4.08m x 3.30m)

Bathroom 4'9" x 10'10" (1.47m x 3.31m)

Utility Room 20'2" x 4'0" (6.16m x 1.24m)

Exterior

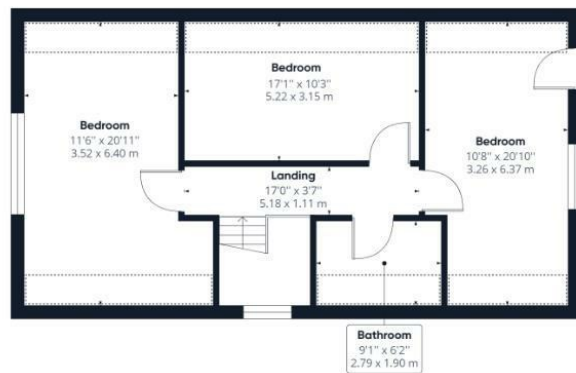
Rear gardens
 Substantial gardens which are separated into two distinct areas.



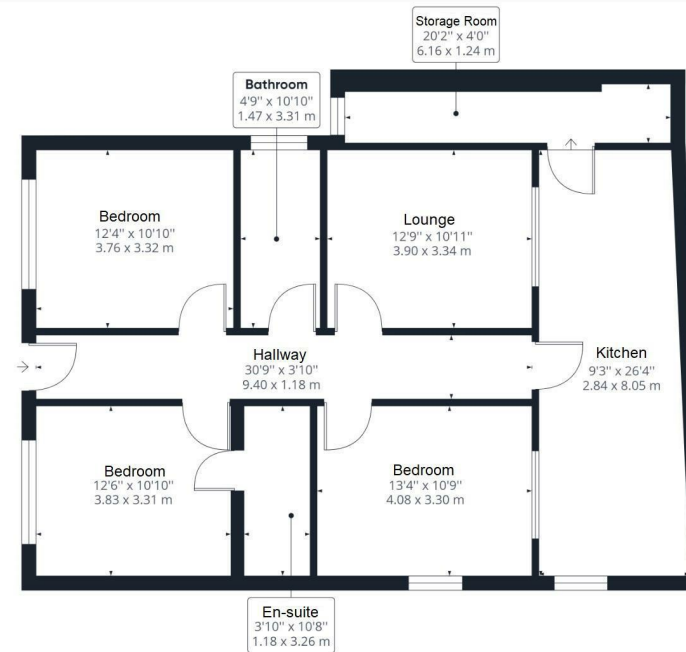


Ground Floor Building 1

Approximate total area⁽¹⁾
 2367.13 ft²
 219.91 m²



Floor 1 Building 1



Approximate total area⁽¹⁾
 1109.08 ft²
 103.04 m²

(1) Excluding balconies and terraces

While every attempt has been made to ensure accuracy, all measurements are approximate, not to scale. This floor plan is for illustrative purposes only.

QIRAFFE360

