



EXTERNALLY

Little Croft is approached via a deep set garden frontage with a patio seating area contained within the enclosed boundary as you pass a single detached garage.



KITCHEN

8'3" x 8'11" (2.25m x 2.72m)

The kitchen contains a comprehensive range of contrasting base and wall units with a low level breakfast bar seating, stainless steel one and a half sink and drainer with mixer tap, sat beneath a opaque glazed window and benefiting from a gas hob with extractor hood over and to the side is the double oven sat within a housing unit. The room has wall and floor tiling and provides utility space for a washing machine concealed behind the units, dishwasher and fridge/freezer.



There is recessed lighting to the ceiling, radiator, neutral décor along with access to the rear porch with further access to the separate annex.



CONSERVATORY

11'1" x 5'5" (3.37m x 1.64m)

Having a glazed roof providing ample natural daylight. Within the room are windows to the side and rear elevations along with a further uPVC door providing access to the external.

From the entrance hall staircase provides access to the first floor split landing with access to four bedrooms and family bathroom.

BEDROOM ONE

11'7" x 10' (3.53m x 3.06m)

This double bedroom set over the lounge provides a double glazed window to the front with view of the garden. The room has a feature fireplace which has been sealed off while the room is neutrally decorated with a featured papered wall and grey carpeting while benefit from radiator, overhead light and power points.



BEDROOM TWO

8'8" x 9' (2.65m x 2.73m)

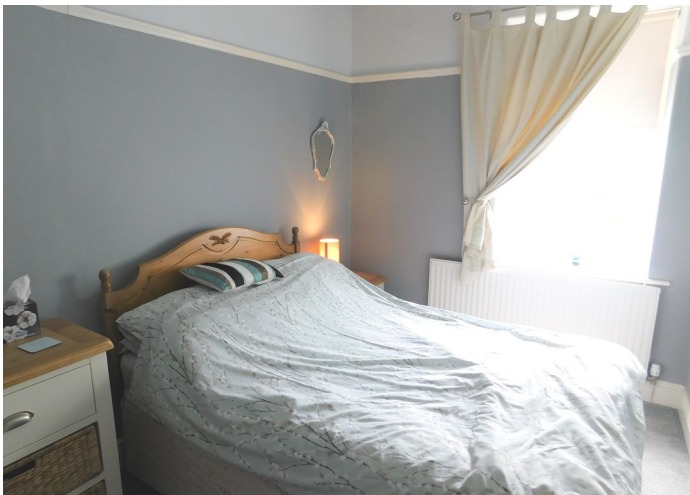
Set up as a single bedroom, the room has a window facing the front elevation with central heating radiator beneath whilst having a featured wallpaper in shades of blue with the remaining contrasting with overhead light and power point.



BEDROOM FOUR
7'8" x 10' (2.33m x 3.04m)
The property has a step leading down to another double bedroom. Decorated in shades of cream with a featured aubergine tones to one wall with radiator, overhead light and power points.



BEDROOM THREE
7'10" x 9'11" (2.40m x 3.02m)
Decorated in shades of grey with a decorative picture rail, this is another double bedroom with a side window and central heating radiator sat beneath. There is overhead light and power points.



BATHROOM
7'10" x 11'8" (2.40m x 3.57m)
The bathroom comprises of a four-piece suite to include a walk-in shower enclosure with self-drainer and twin shower heads, square wash hand basin sat within a vanity unit with waterfall tap over, bath with central taps and fixed shower head and WC. The room has been finished with neutral wall and floor tiles along with overhead lighting.



ANNEX
Within the annex the accommodation briefly comprises of kitchen, lounge, bedroom and bathroom.



LOUNGE
13'9" x 10'1" (4.19m x 3.07m)



BEDROOM
11'7" x 7'11" (3.54m x 2.40m)

KITCHEN
17'10" x 12'2" (5.44m x 3.70m)



BATHROOM
3'9" x 8'4" (4.19m x 3.07m)

