



## Regency Lettings & Property Management

Rystead Lodge Barn Buildings  
Pockford Road, Chiddingfold  
Surrey, GU8 4XS

Lettings: 01428 684540  
[www.rlpm.co.uk](http://www.rlpm.co.uk)  
[valissa@rlpm.co.uk](mailto:valissa@rlpm.co.uk)



### **Malthouse Farm Flat, Malthouse Lane, Hambledon, GU8 4HH**

**£1,150 pcm (inc Water Rates)**

We are pleased to offer this charming 1 bedroom period apartment which is part of a 16th/17th Century Malt House and Barn situated in the picturesque village of Hambledon, outside Godalming off the A283 Petworth Road between Chiddingfold and Witley.

New shaker style kitchen. Recently decorated throughout. Neutral carpets and curtains. Gas Central Heating. Large walkin storage cupboard. Spacious outer hallway.

This property is part of a listed period building therefore no smoking or pets are allowed. The property is suitable for a professional couple or a single person. No children. Off street parking is available nearby.

Approx 20 min walk to Witley train station. Local Village Shop and Pub/Restaurant within walking distance. Long term tenancy available. Available from the end of May.



## Regency Lettings & Property Management

Rystead Lodge Barn Buildings  
Pockford Road, Chiddingfold  
Surrey, GU8 4XS

Lettings: 01428 684540  
[www.rlpm.co.uk](http://www.rlpm.co.uk)  
[valissa@rlpm.co.uk](mailto:valissa@rlpm.co.uk)



Sitting room



Bedroom







## Regency Lettings & Property Management

Rystead Lodge Barn Buildings  
Pockford Road, Chiddingfold  
Surrey, GU8 4XS

Lettings: 01428 684540  
[www.rlpm.co.uk](http://www.rlpm.co.uk)  
[valissa@rlpm.co.uk](mailto:valissa@rlpm.co.uk)



Rental inclusive of water rates and regular exterior window cleaning.

Council tax band C - approx. £2,175 per annum. EPC Band D.  
Deposit 5 weeks rent - Held by the DPS in a custodial scheme

Available from early July. Viewings available by appointment only.





## Regency Lettings & Property Management

Rystead Lodge Barn Buildings  
Pockford Road, Chiddingfold  
Surrey, GU8 4XS

Lettings: 01428 684540  
[www.rlpm.co.uk](http://www.rlpm.co.uk)  
[valissa@rlpm.co.uk](mailto:valissa@rlpm.co.uk)

### Malthouse Farm Flat Hambledon GU8 4HH

Approximate Gross Internal Area  
62 sq m / 667 sq ft

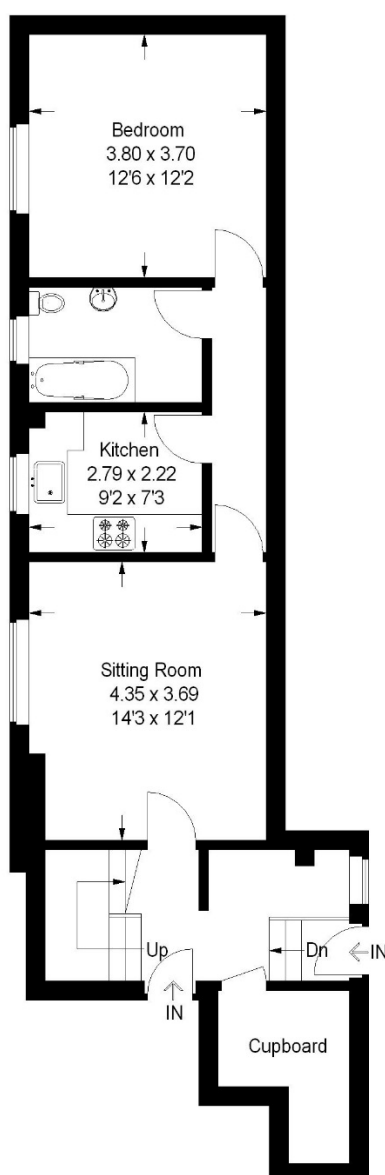


Illustration for identification purposes only, measurements are approximate,  
not to scale. Floorplan by: [www.epc4u.info](http://www.epc4u.info)