



Harrowby Street, W1H

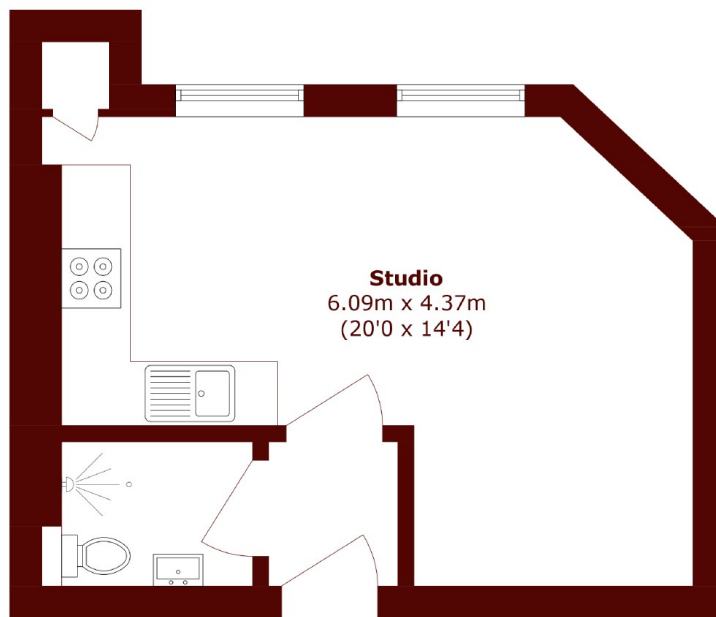
£375,000



- Stylish Studio Flat
- Modern Decor

- Modern Kitchen
- Porter

- Lift
- Long Lease



Total area (approx.): 26.4 sq. m (284.1 sq. ft)

Marsh & Parsons Kensington

9 Kensington Church Street,
London, W8 4LF
020 7368 4450