



Marylebone Road, NW1

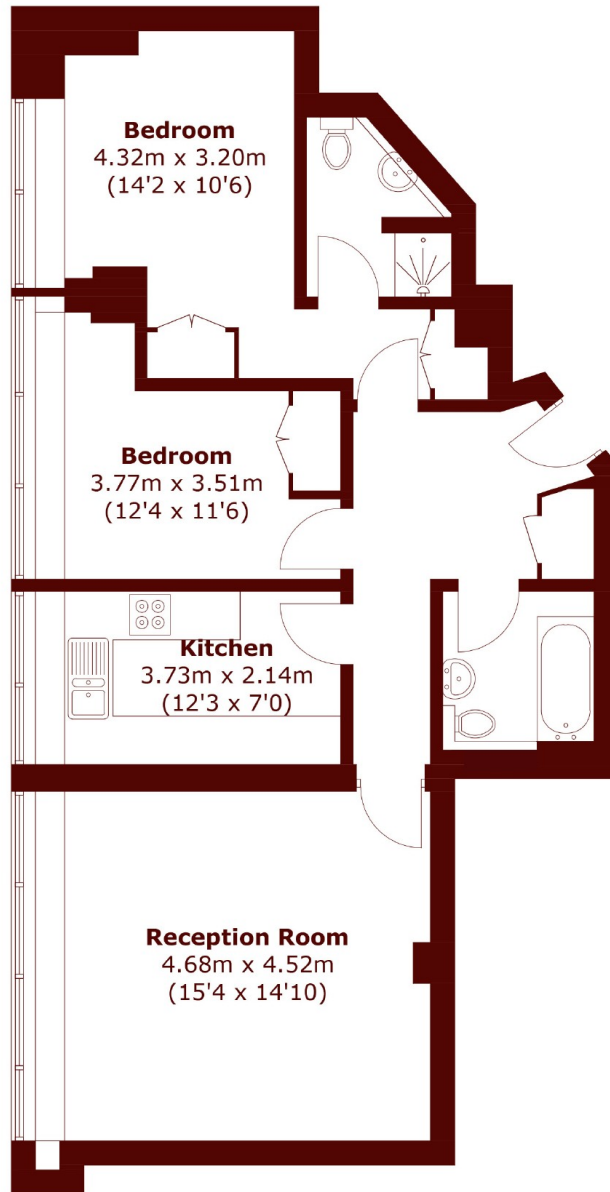
£850,000



- Two bedrooms
- Two bathrooms

- Reception Room
- 24 hour Concierge

- Lift
- Marylebone Station



Seventh Floor

Total area (approx.): 73.9 sq. m (795.4 sq. ft)

Marsh & Parsons Marylebone & Mayfair

94 Baker Street, London,
W1U 6FZ
020 7935 1775