

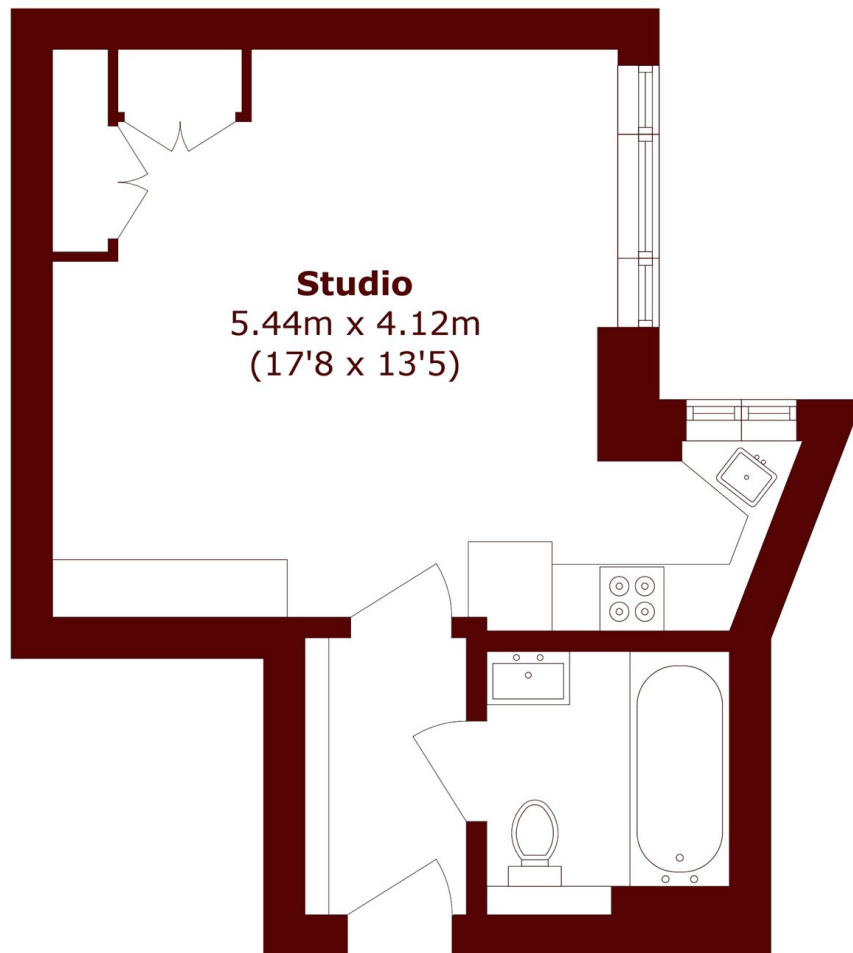


George Street, W1H

£325,000

0 1 1 E

- Studio
- Naturally Lit
- Modern Kitchen
- Meticulously Finished
- Murphy Bed
- 24 Hour Porter



Total area (approx.): 24.9 sq. m (268.0 sq. ft)

Marsh & Parsons Marylebone & Mayfair

94 Baker Street, London,
W1U 6FZ
020 7935 1775