

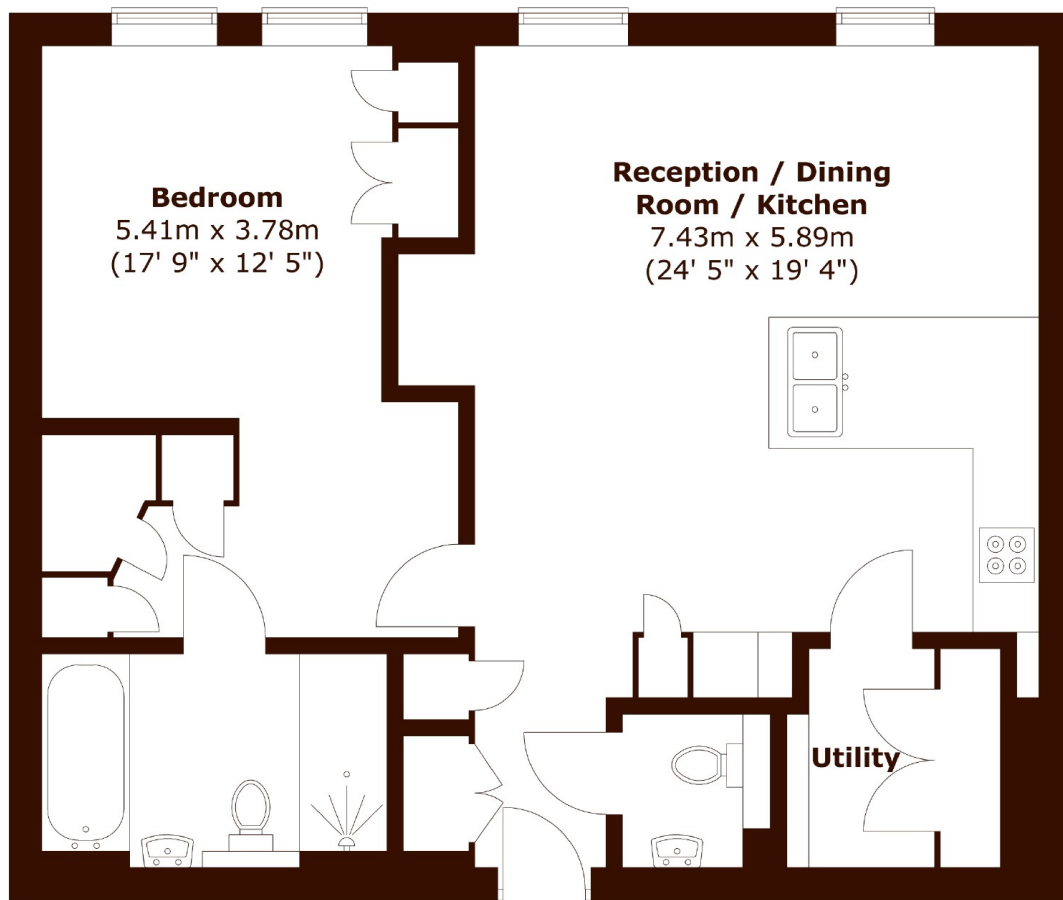


Pearson Square, W1T

£1,490,000



- One Double Bedroom
- Long Lease
- Built In Storage
- 24 Hour Porter
- Fourth Floor
- Separate Utility Room



Total area (approx.) : 68.4 sq. m (736 sq. ft)

Marsh & Parsons Marylebone & Mayfair

94 Baker Street, London,
W1U 6FZ
020 7935 1775