



Pearson Square, W1T

£1,490,000



- One Double Bedroom
- Long Lease
- Fourth Floor
- Built In Storage
- 24 Hour Porter
- Separate Utility Room





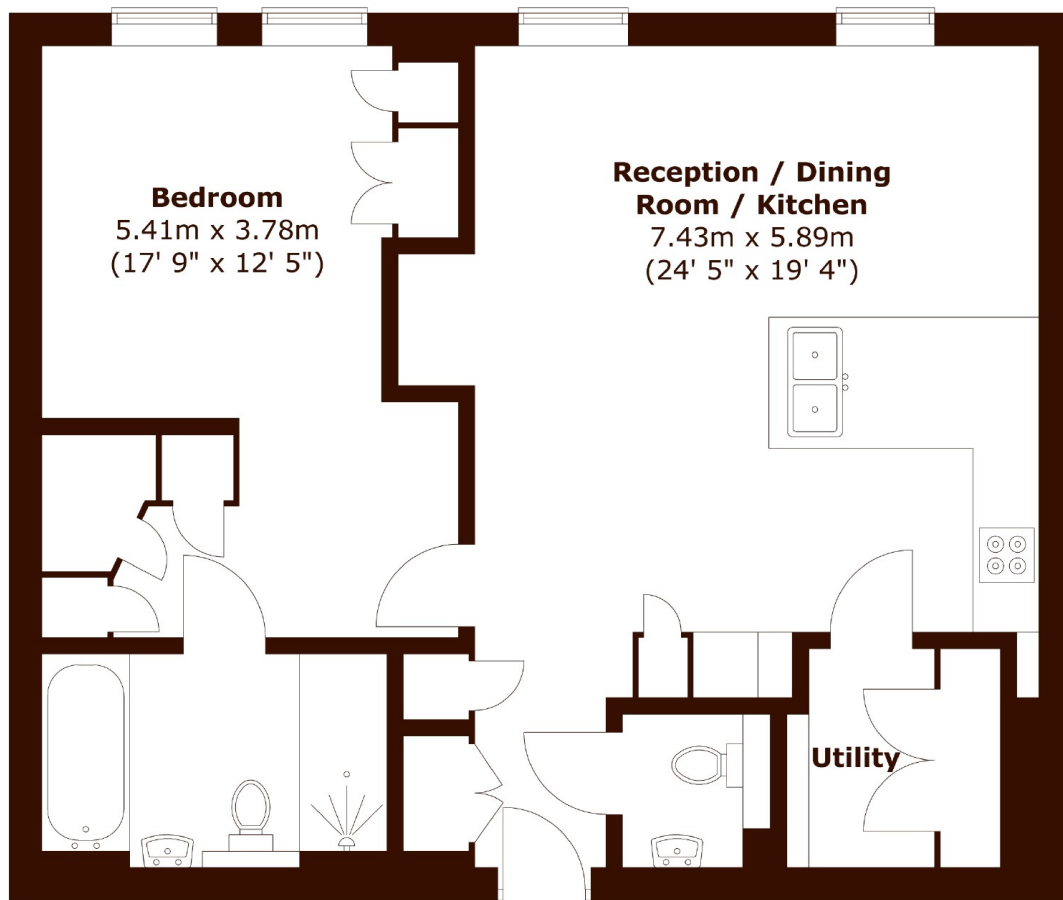
ABOUT THE PROPERTY

Set within one of Fitzrovia's most prestigious developments, this beautifully designed one-bedroom apartment offers modern living in the heart of London's vibrant West End. The property features an open-plan living and dining area with floor-to-ceiling windows, flooding the space with natural light. A sleek, fully fitted kitchen with integrated appliances complements the contemporary design, while the generous bedroom includes ample built-in storage. The elegant bathroom is finished to the highest standard, creating a luxurious retreat. Residents of Pearson Square enjoy the benefits of a 24-hour porter.



The development is surrounded by boutique shops, fine dining restaurants, and cultural landmarks, while Oxford Street, Regent's Park, and Soho are just moments away. Excellent transport links ensure easy access across London and beyond.





Total area (approx.) : 68.4 sq. m (736 sq. ft)

Marsh & Parsons Marylebone & Mayfair

94 Baker Street, London,
W1U 6FZ
020 7935 1775