

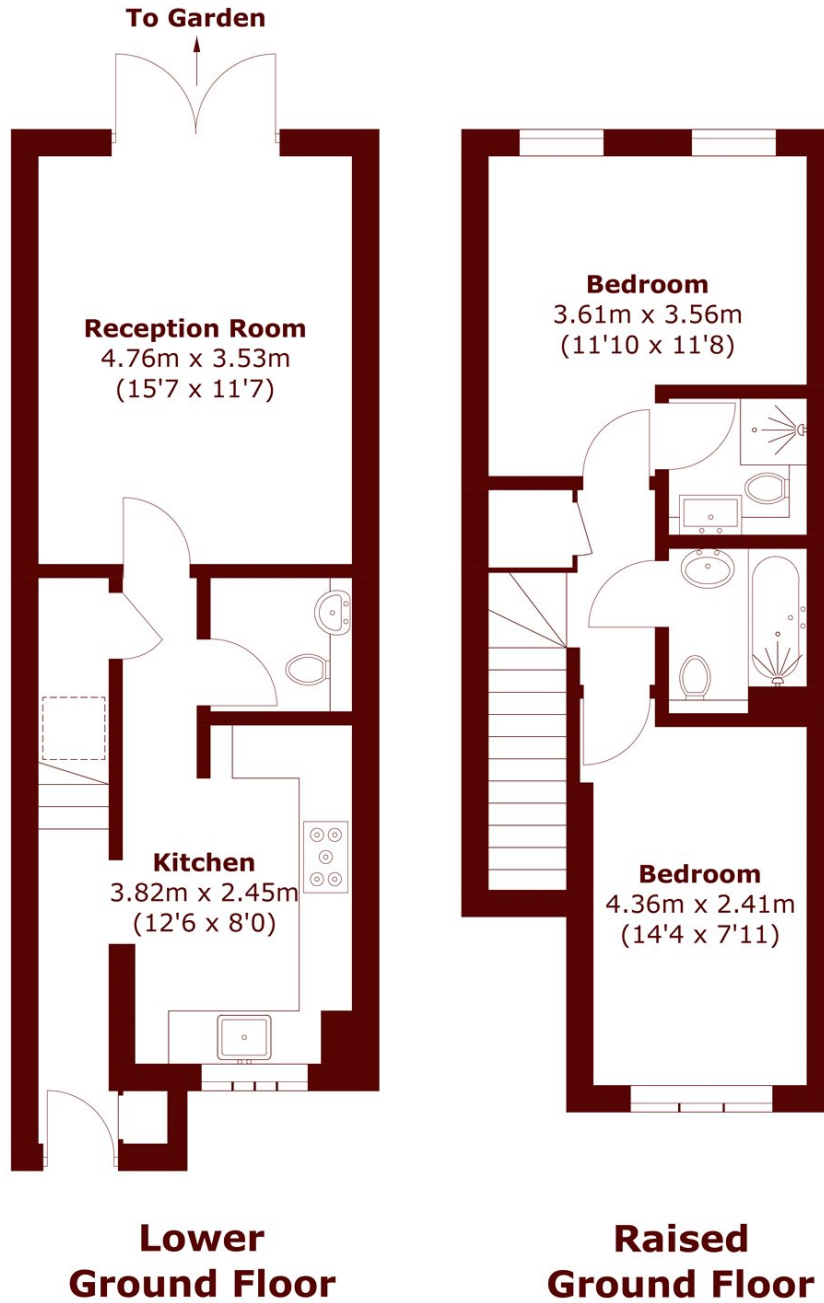


## Broadley Terrace, NW1

£650,000



- Two Double Bedrooms
- Two Modern Bathrooms
- Porter
- Communal Gym
- Immaculate Finish Throughout
- Marylebone Station



Total area (approx.): 72.9 sq. m (784.6 sq. ft)

## Marsh & Parsons Marylebone & Mayfair

94 Baker Street, London,  
W1U 6FZ  
020 7935 1775