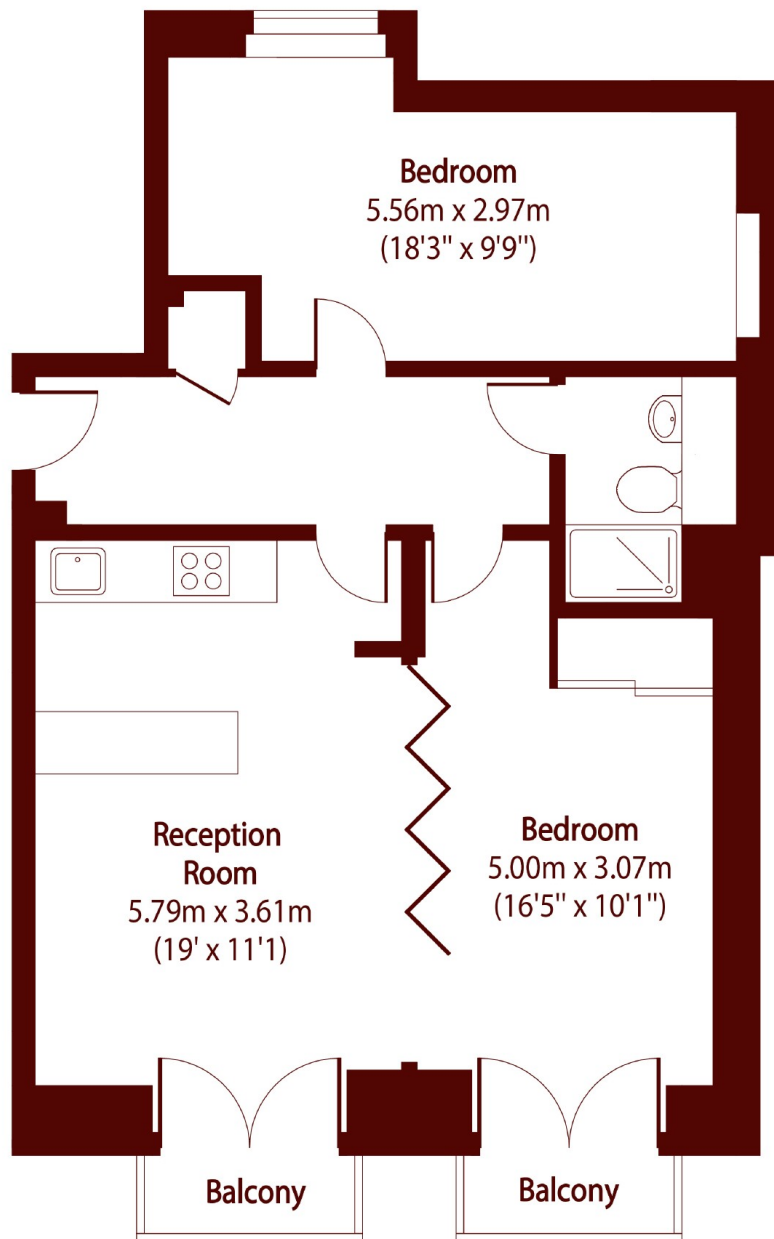




Picton Place, W1U

£1,095 pcm

2 1 1 C



Total area (approx): 64.10 sq m (690 sq. ft)

Balcony total area (approx): 3.06 sq m (33 sq. ft)

Marsh & Parsons Marylebone & Mayfair

94 Baker Street, London,
W1U 6FZ
020 7935 1775