

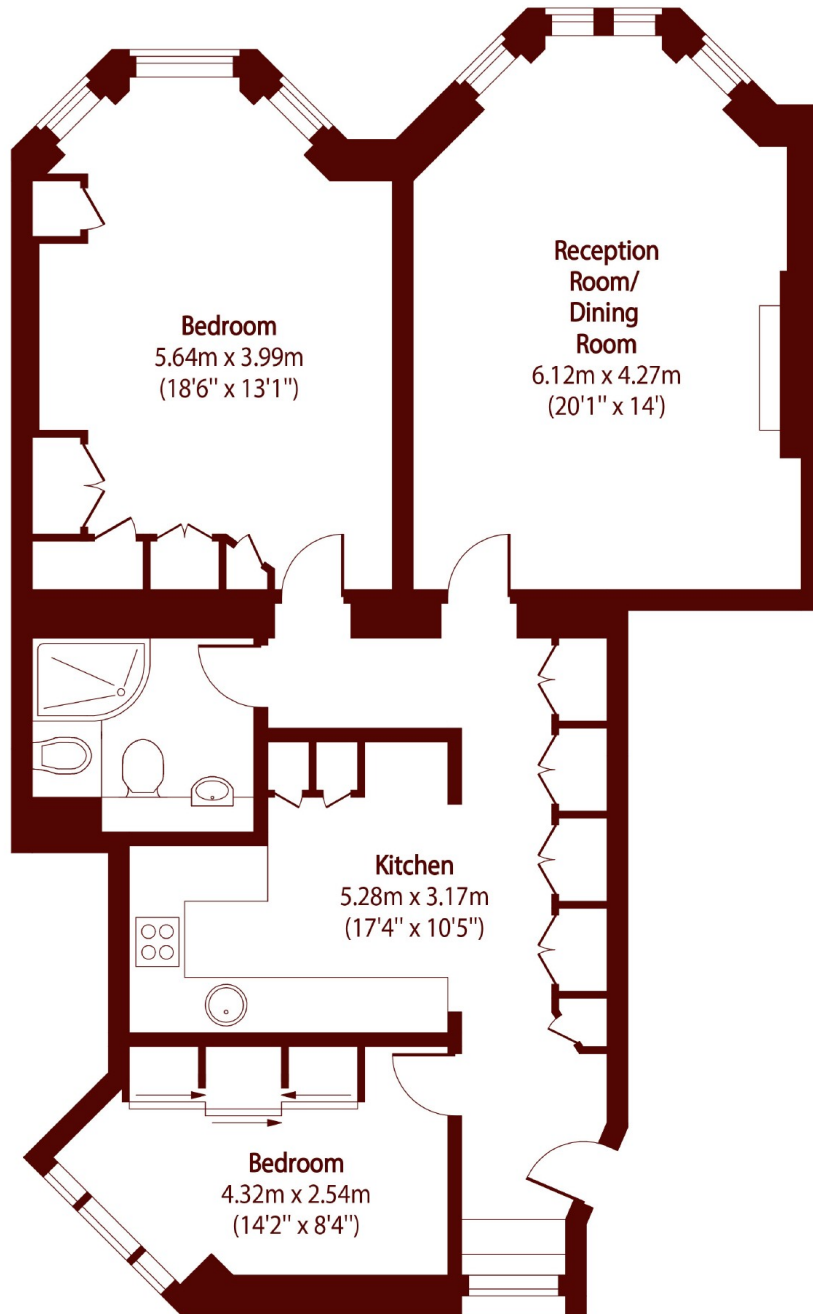


## Bickenhall Street, W1U

£920,000



- Two Double Bedrooms
- 24 Hour Security
- Super Location
- Share of Freehold
- High Ceilings
- Baker Street Station



Total area (approx): 86.58 sq m (932 sq. ft)

## Marsh & Parsons Marylebone & Mayfair

94 Baker Street, London,  
W1U 6FZ  
020 7935 1775