

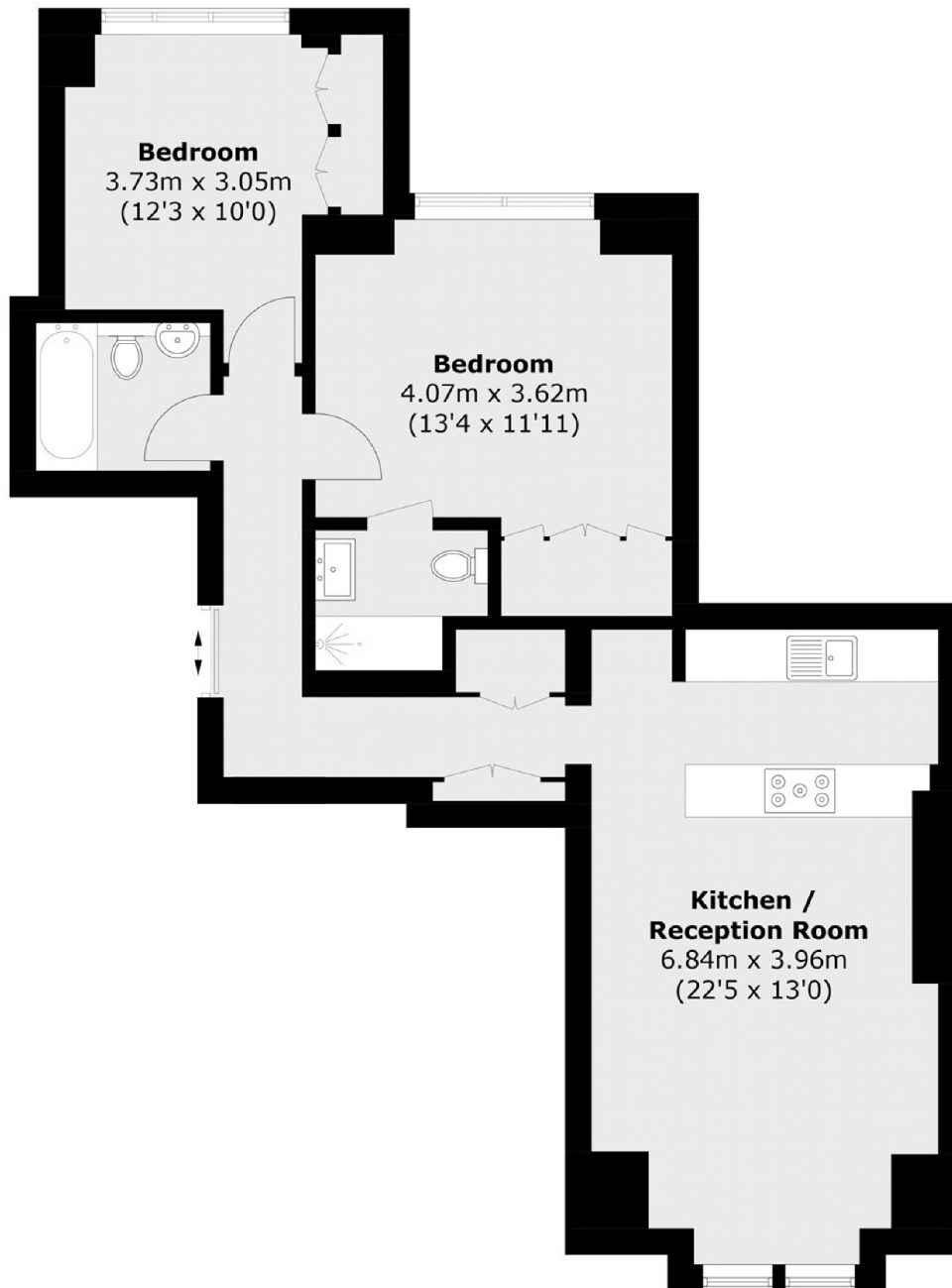


Bickenhall Street, W1U

£925,000

2 2 1 D

- Two Double Bedrooms
- Two Bathrooms
- Share of Freehold
- 24 Hour Porter
- Mansion Block
- Modern Throughout



Total area (approx.): 73.0 sq. m (785.7 sq. ft)

Marsh & Parsons Marylebone & Mayfair

94 Baker Street, London,
W1U 6FZ
020 7935 1775