



Chiltern Court, NW1

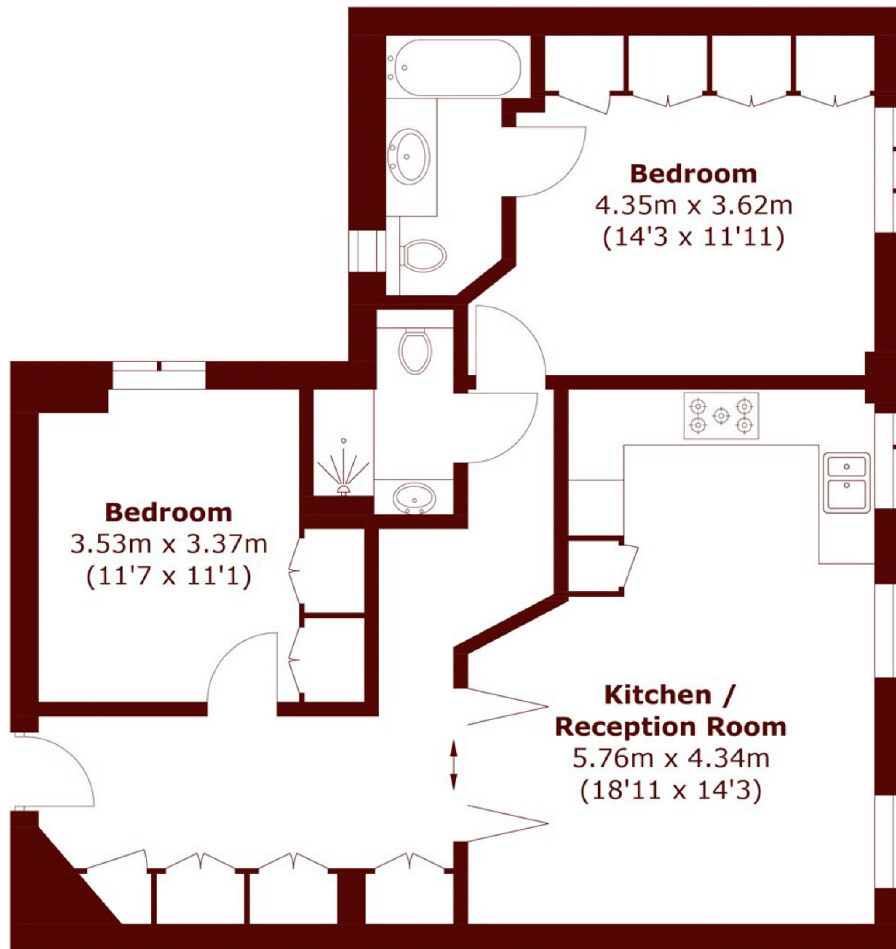
£1,195,000



- Two Double Bedrooms
- Porter

- High Ceilings
- Modern Throughout

- Lift
- Prime Location



First Floor

Total area (approx.): 71.9 sq. m (773.9 sq. ft)

Marsh & Parsons Marylebone & Mayfair

94 Baker Street, London,
W1U 6FZ
020 7935 1775