



Portsea Place, W2

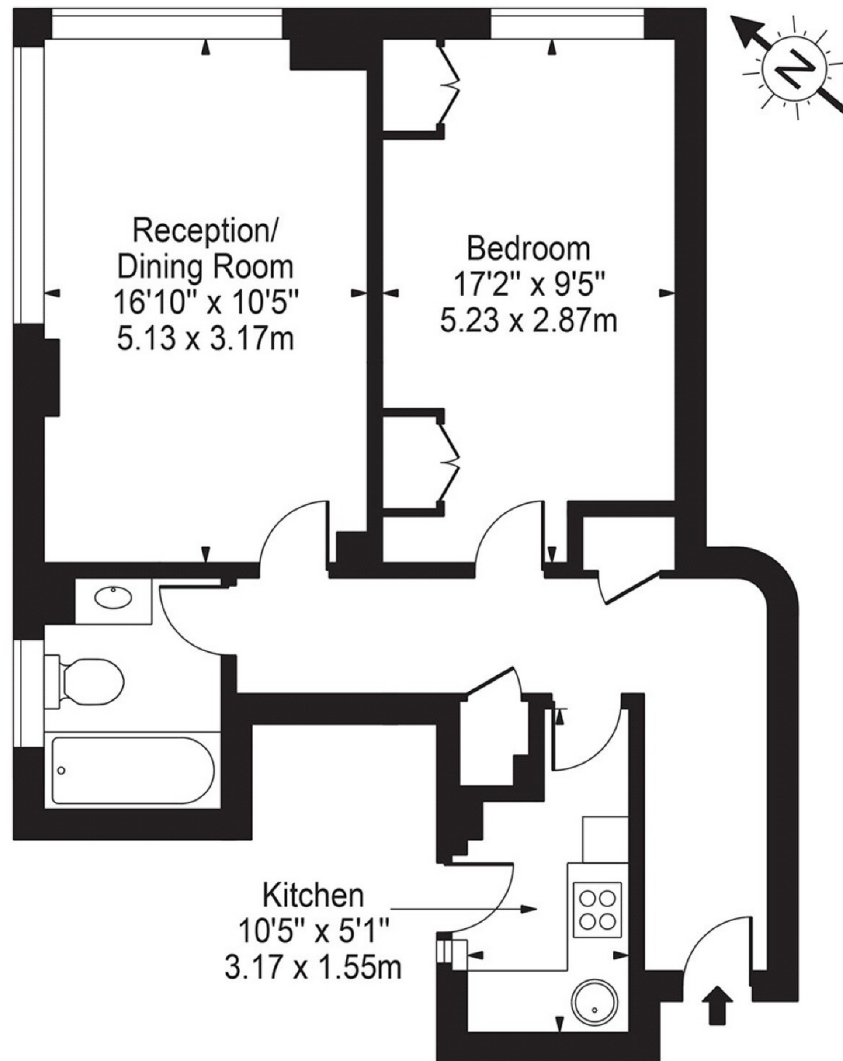
£475,000



- One bedroom
- Opposite Hyde Park
- Modern Finish
- Concierge/Porter
- Close to Transport Links
- Separate Kitchen

Portsea Hall, W2

Approx. Gross Internal Area 569 Sq Ft - 52.86 Sq M



First Floor

For Illustration Purposes Only - Not To Scale

This floor plan should be used as a general outline for guidance only and does not constitute in whole or in part an offer or contract. Any intending purchaser or lessee should satisfy themselves by inspection, searches, enquiries and full survey as to the correctness of each statement. Any areas, measurements or distances quoted are approximate and should not be used to value a property or be the basis of any sale or let.

Marsh & Parsons Marylebone & Mayfair

94 Baker Street, London,
W1U 6FZ
020 7935 1775