



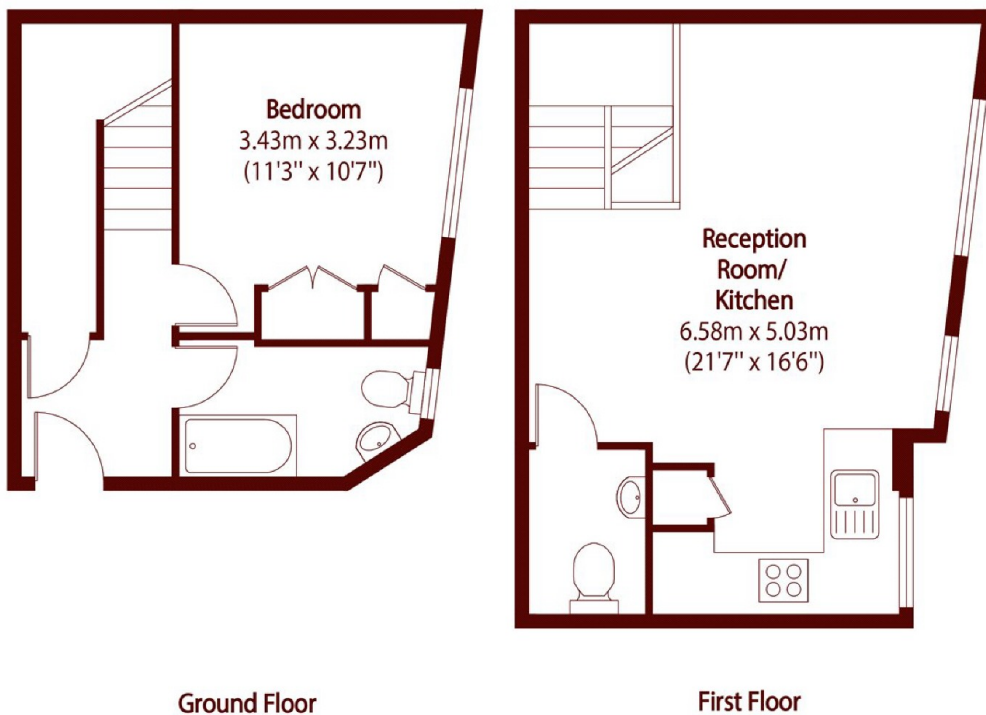
Marylebone Road, NW1

£650,000



- Long Lease
- Demised Patio Area
- 24 Hour Portorage
- Fantastic Transport Links

- Additional W/C
- Duplex Living



Total area (approx): 53.07 sq m (571 sq. ft)

Marsh & Parsons Marylebone & Mayfair

94 Baker Street, London,
W1U 6FZ
020 7935 1775