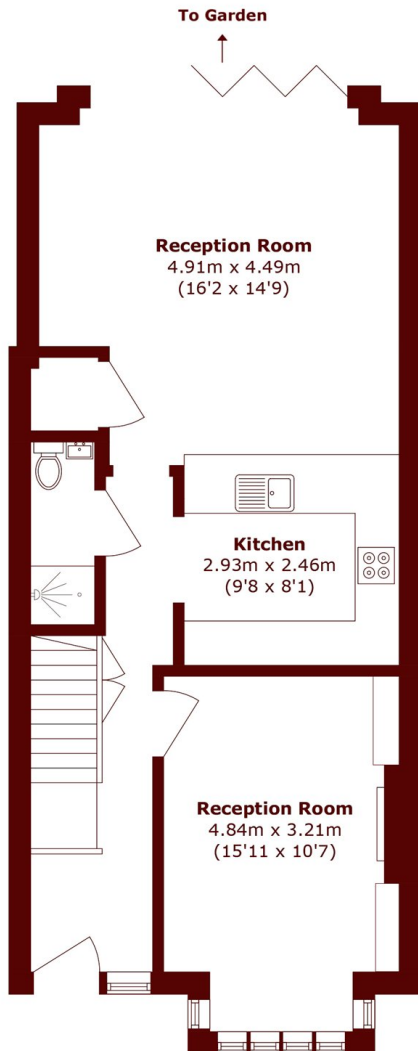




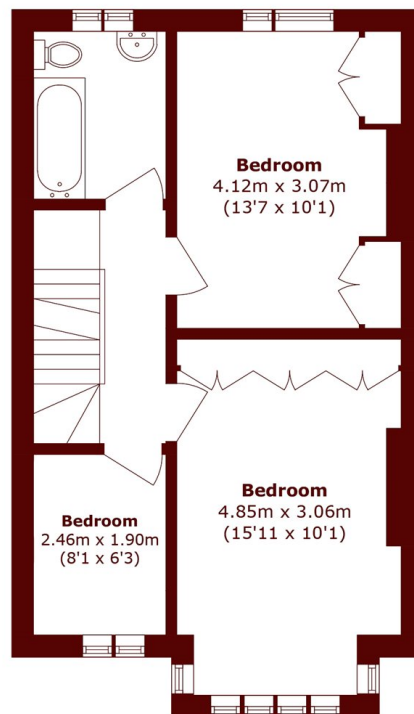
## Rannoch Road, W6

£1,400,000

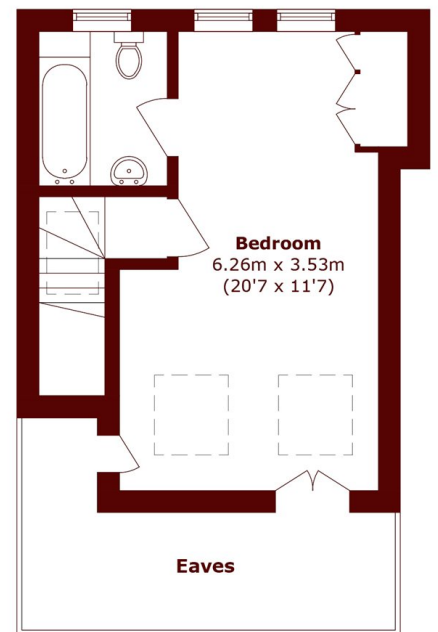




**Ground Floor**



**First Floor**



**Second Floor**

Total area (approx.): 131.2 sq. m (1,411.9 sq. ft)

## Marsh & Parsons Bishops Park

333 Fulham Palace Road,  
London, SW6 6TE  
020 7993 9888

We aim to make our particulars both accurate and reliable. However, they are not guaranteed; nor do they form part of an offer or contract. If you require clarification on any points then please contact us, especially if you're traveling some distance to view. Please note that appliances and heating systems have not been tested and therefore no warranties can be given as to their good working order.