



## Colehill Lane, SW6

£6,500 per week ( pcm)



- 3 Double Rooms

- 3 Modern Bathrooms

- Prime Location







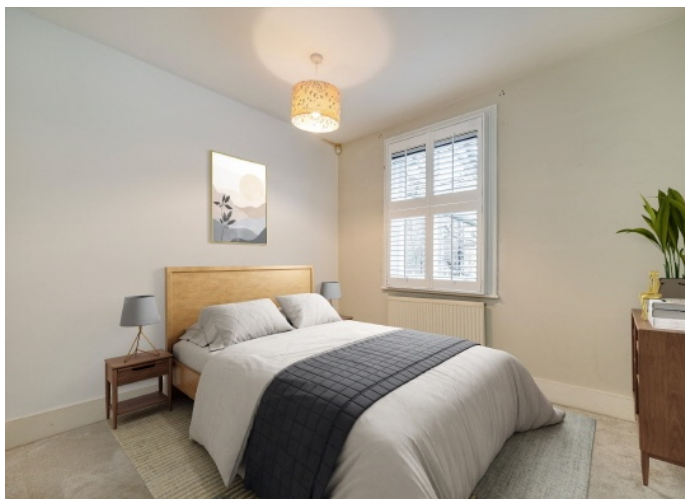


## ABOUT THE PROPERTY

A beautifully refurbished three-bedroom period townhouse, ideally located in one of Fulham's most sought-after residential areas. This elegant home combines classic period features with modern finishes, offering bright and spacious accommodation throughout.

The property benefits from high ceilings, original fireplaces and thoughtfully designed interiors that provide a seamless flow between the living, dining and kitchen spaces.

Further features include a well-maintained private garden, ideal for relaxing or entertaining, and an impressive roof terrace offering open views and excellent outdoor space. Superbly positioned close to local amenities, transport links and the vibrant lifestyle Fulham has to offer, this outstanding townhouse would make an ideal family home or refined London residence.





Total area (approx.): 154.6 sq. m (1,664.2 sq. ft)  
 (Excluding Eaves)  
 Roof Terrace : 20.4 sq. m (219.6 sq. ft)

## Marsh & Parsons Bishops Park

333 Fulham Palace Road,  
 London, SW6 6TE  
 020 7993 9888