

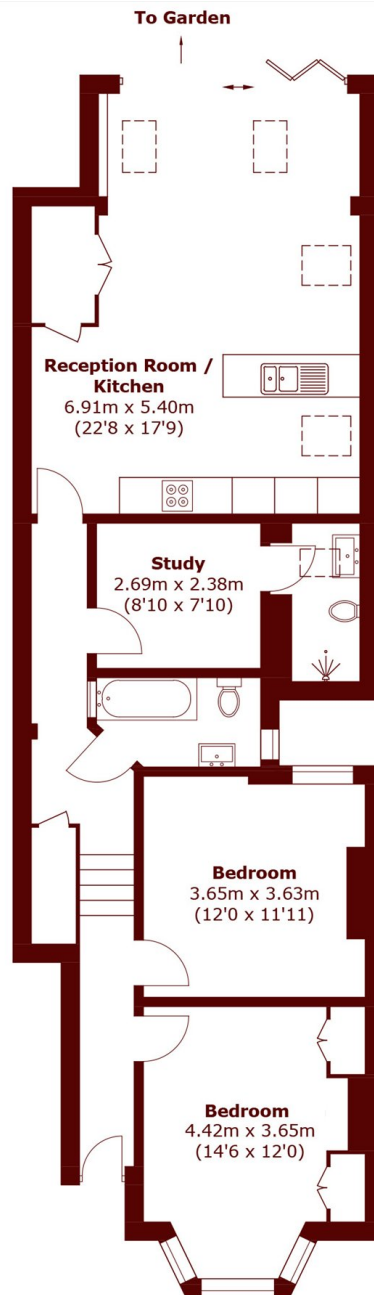


Harbord Street, SW6

£900,000



- Three bedrooms
- South facing garden
- Over 1000sqft/94sqm
- Two bathrooms
- Alphabet street
- 29ft reception room/kitchen



Total area (approx.): 93.7 sq. m (1,008.5 sq. ft)

Marsh & Parsons Bishops Park

333 Fulham Palace Road,
London, SW6 6TE
020 7993 9888