



## Crisp Road, W6

Asking price £475,000



- Two double bedrooms
- Share of Freehold
- Lots of storage







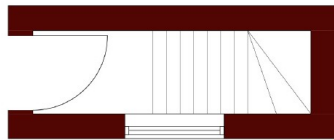
## ABOUT THE PROPERTY

Set within a period property close to all the amenities of the central Hammersmith. Accommodation comprises two double bedrooms, open plan living room kitchen, modern bathroom, a converted cellar study area and private patio garden.

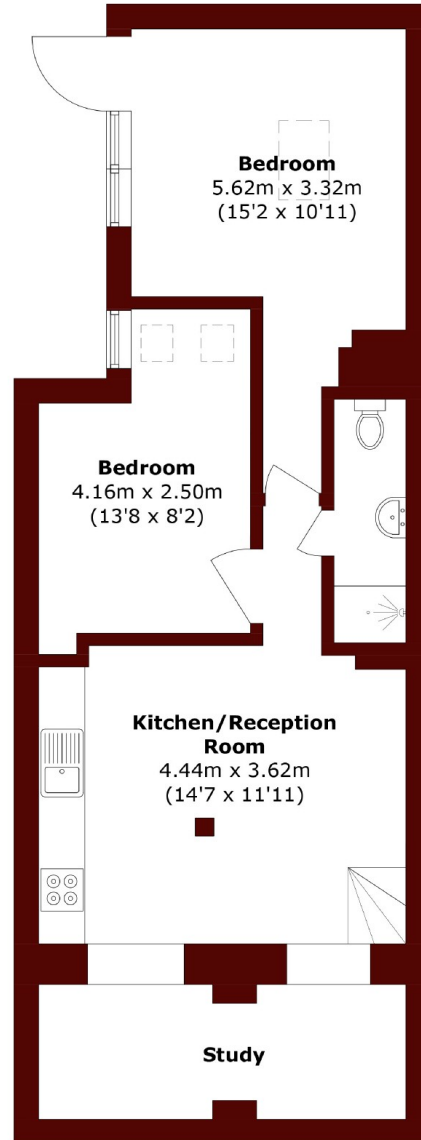
Situated in the heart of Hammersmith, enjoy a leisurely stroll to the nearby shops, cafes, and restaurants that line the vibrant streets. For those who enjoy outdoor activities, the beautiful Frank Banfield Park is just a short walk away, as well as the River Thames. You can re-fuel with a pizza from Crisp Pizza, voted one of the best in London.

Transport links are excellent, with Hammersmith underground station (serving the Piccadilly, District, Hammersmith & City, and Circle lines) just a few minutes walk from your doorstep. This provides quick and convenient access to Central London and beyond. Additionally, numerous bus routes and the nearby A4/M4 motorway ensure easy travel by road.





**Ground Floor**



**Lower Ground Floor**

Total area (approx.): 56,8 sq. m (611,3 sq. ft)

## Marsh & Parsons

333 Fulham Palace Road,  
London, SW6 6TE  
020 7993 9888

We aim to make our particulars both accurate and reliable. However, they are not guaranteed; nor do they form part of an offer or contract. If you require clarification on any points then please contact us, especially if you're traveling some distance to view. Please note that appliances and heating systems have not been tested and therefore no warranties can be given as to their good working order.