



# 12 Tunstall Street

, Middlesbrough, TS3 6PE

£550 PCM



# 12 Tunstall Street

, Middlesbrough, TS3 6PE

£550 PCM



## ENTRANCE

Entering through a white UPVC double glazed door from the street into a small passage way which gains access to the reception/ dining room.

## RECEPTION/ DINING ROOM

At the front of the room lies the reception area, spacious enough to accommodate a cozy two-piece suite. The space is anchored by a central fireplace framed with a charming fire surround, flanked by a UPVC double-glazed window that lets in plenty of natural light. A radiator sits nearby, adding warmth and comfort. Towards the rear, there's a dedicated dining area, perfectly sized for a table where meals and conversations can unfold. This section also features a UPVC double-glazed window and its own radiator, ensuring a bright and cozy atmosphere. From this room, you can access both the staircase leading to the first floor and the kitchen beyond, making it a practical and inviting hub of the home.

## KITCHEN

The kitchen is outfitted with a collection of white wall cabinets, base units, and drawers, each accented by sleek black handles that pop against the crisp surfaces. Dark

countertops create a striking contrast, adding depth and character to the space. A built-in electric oven sits neatly below a gas hob, providing a convenient cooking setup. There's ample room for freestanding appliances, ensuring flexibility for your kitchen needs. Natural light floods in through a UPVC double-glazed window and door, which open onto the rear yard, linking the indoor space with the outdoors. Additionally, the kitchen offers direct access to the ground-floor bathroom, enhancing the home's flow and functionality.

## GROUND FLOOR BATHROOM

The ground floor bathroom features a crisp white three-piece suite, starting with a classic paneled bathtub equipped with a sleek mixer tap and a convenient shower attachment. Alongside it sits a stylish hand basin, paired with a low-level toilet designed for comfort and efficiency. The space is thoughtfully accented with partially tiled walls that catch the light, a warm radiator that adds a touch of coziness, and a frosted UPVC double-glazed window that bathes the room in soft, natural light while ensuring privacy.

## LANDING

The landing gains access to the three spacious bedrooms and loft.

### BEDROOM ONE

The first bedroom easily accommodates a cozy double bed along with spacious storage units, creating a practical and comfortable living space. Brightened by a UPVC double-glazed window, the room also features a warm radiator, ensuring comfort throughout the seasons.

### BEDROOM TWO

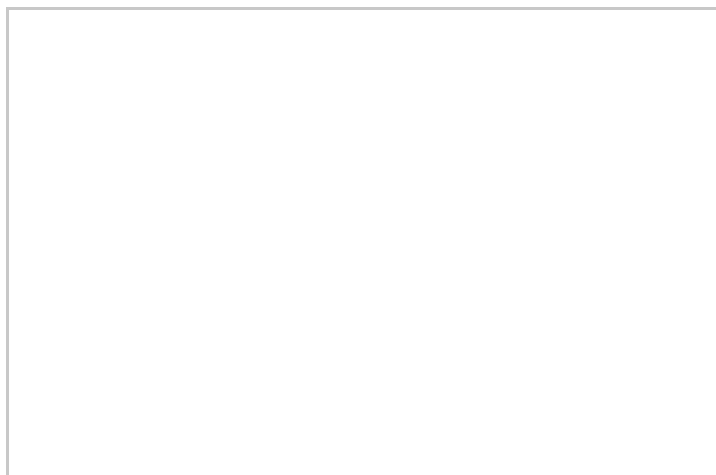
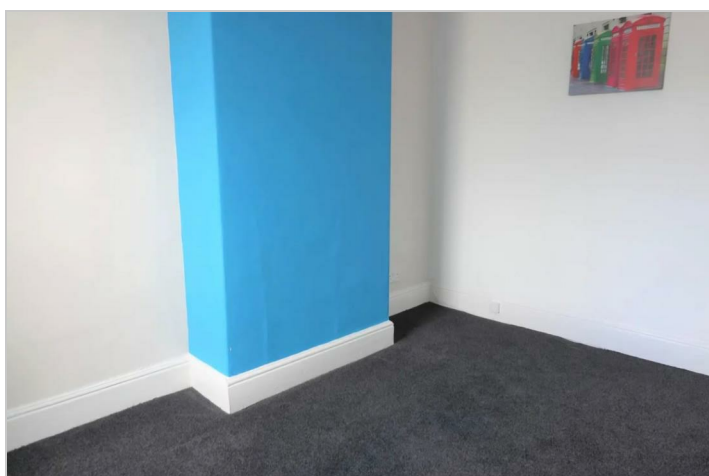
The second bedroom comfortably fits a double bed and can accommodate a few modestly sized storage pieces. It features a UPVC double-glazed window that lets in natural light while keeping the room well insulated. A radiator ensures warmth throughout the colder months, and soft carpeting underfoot adds a cozy touch to the space.

### BEDROOM THREE

The third bedroom offers just enough room to fit a single bed comfortably, along with a few compact storage units for essentials. Natural light filters in through a UPVC double-glazed window, while a radiator keeps the space warm and cozy. The soft carpet underfoot adds a touch of comfort to this modest but inviting room.

### EXTERNAL

The property features convenient on-street parking and a fenced, secure rear yard, perfect for privacy and outdoor relaxation. It's located just a brief stroll or quick drive from reliable bus routes that connect directly to Middlesbrough town centre and Teesside University, making daily commutes and errands simple and stress-free.



Road Map



Hybrid Map



Terrain Map



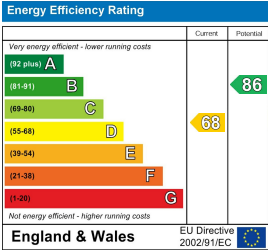
Floor Plan



Viewing

Please contact our Middlesbrough Office on 01642 462153 if you wish to arrange a viewing appointment for this property or require further information.

Energy Efficiency Graph



These particulars, whilst believed to be accurate are set out as a general outline only for guidance and do not constitute any part of an offer or contract. Intending purchasers should not rely on them as statements of representation of fact, but must satisfy themselves by inspection or otherwise as to their accuracy. No person in this firms employment has the authority to make or give any representation or warranty in respect of the property.