



PH ESTATE AGENTS



10 Curson Street , Middlesbrough, TS6 9LQ

£90,000



10 Curson Street

, Middlesbrough, TS6 9LQ

£90,000



ENTRANCE PORCH

3'4" x 2'10" (1.02m x 0.86m)

Step into this charming home through a welcoming black double-glazed composite door that opens into a cosy entrance porch. The porch sets the tone for the rest of the home with its warm modern gray carpet and tasteful neutral wallpaper.

RECEPTION ROOM

10'4" x 12'9" (3.15m x 3.89m)

As you enter the reception room, you'll be greeted by an inviting space bathed in natural light pouring in through the large double-glazed window. The room's modern neutral decor and plush new carpet create a serene and soothing atmosphere. A central heating radiator ensures warmth on cooler days.

DINING ROOM

11'6" x 12'9" (3.51m x 3.89m)

Adjacent to the reception room is a second cosy reception space, perfectly sized for a dining area. Imagine gathering around the inviting log burner, surrounded by the warm glow of the fire, while enjoying a delicious meal. This room also features a central heating radiator for additional heat, as well as a rear window that lets in plenty of natural light.

KITCHEN

12'8" x 6'10" (3.86m x 2.08m)

The modern kitchen features white base, wall, and drawer units that offer ample storage. The easy-to-clean floor and wall tiles make maintenance a breeze. There's even space for all your essential appliances. An external door allows access to the rear yard.

BATHROOM

7'0" x 6'0" (2.13m x 1.83m)

To the rear of the home you'll find the stylish family bathroom. It boasts a modern three-piece suite, including a toilet and basin set in a sleek modern vanity and a large shower cubicle. A large chrome towel warmer and a frosted side window add to the room's elegance and practicality.

LANDING

11'5" x 2'7" (3.48m x 0.79m)

The landing, with its new modern carpet, leads you to the three well-appointed bedrooms. Each bedroom offers a peaceful retreat with its own unique charm.

BEDROOM ONE

10'6" x 12'9" (3.20m x 3.89m)

To the front of the home, this generously sized room boasts a large double-glazed window

that overlooks the peaceful street. A central heating radiator ensures cosy comfort, while the neutral decor and plush carpet create a serene and inviting atmosphere.

BEDROOM TWO

11'9" x 9'9" (3.58m x 2.97m)

Step into this modern and stylish bedroom, featuring a new grey carpet, central heating, and a built-in storage cupboard. The room is bathed in natural light from the window overlooking the rear yard, providing a tranquil space to relax and unwind.

BEDROOM THREE

13'10" x 6'11" (4.22m x 2.11m)

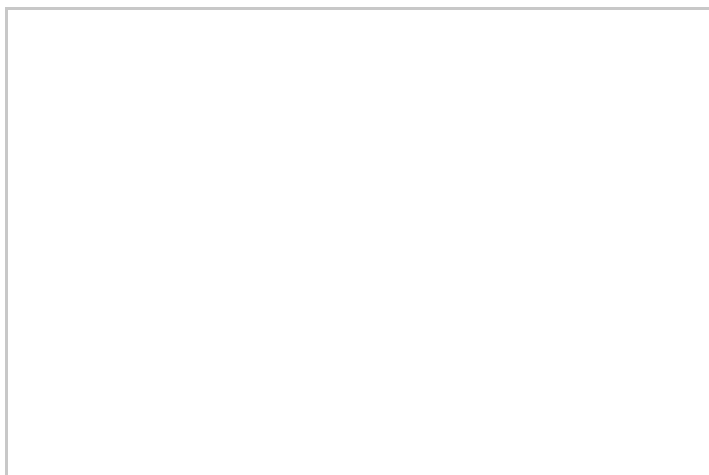
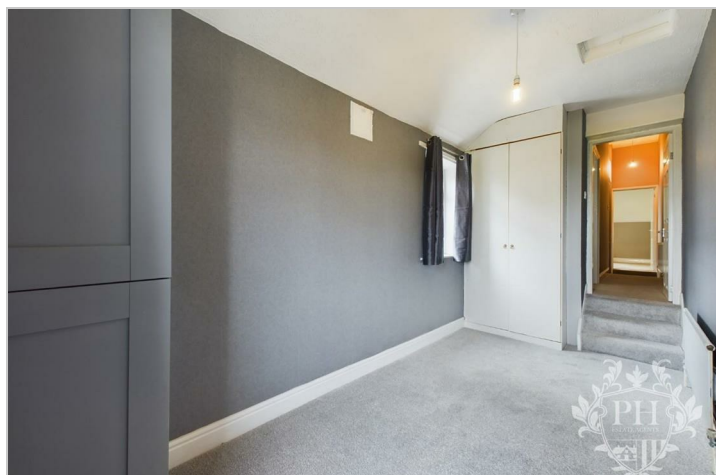
Located at the rear of the home, this bedroom offers a step-down layout. It features neutral decor, a plush carpet, central heating, and both rear and side aspect windows allowing lots of natural light to flow through.

EXTERNAL

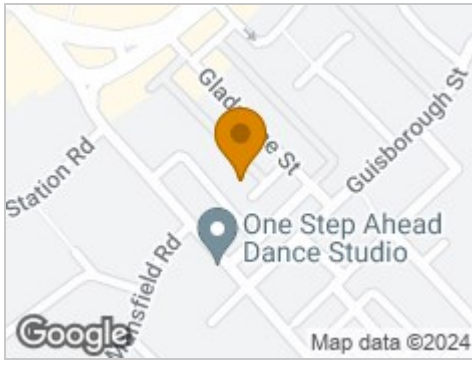
The home features an enclosed yard at the rear, perfect for enjoying outdoor relaxation.

On-street parking is available directly in front of the home, with permit holder spaces. This ensures easy access and convenience for vehicles.

This well-appointed home offers a comfortable and inviting living space, with each bedroom providing a unique charm and layout. Whether you're a first-time buyer, downsizing, or looking for an investment property, this home is ready to welcome you home.



Road Map



Hybrid Map



Terrain Map



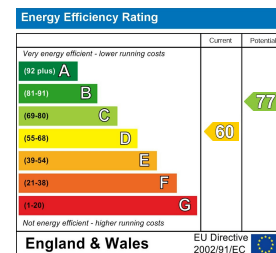
Floor Plan



Viewing

Please contact our Middlesbrough Office on 01642 462153 if you wish to arrange a viewing appointment for this property or require further information.

Energy Efficiency Graph



These particulars, whilst believed to be accurate are set out as a general outline only for guidance and do not constitute any part of an offer or contract. Intending purchasers should not rely on them as statements of representation of fact, but must satisfy themselves by inspection or otherwise as to their accuracy. No person in this firm's employment has the authority to make or give any representation or warranty in respect of the property.