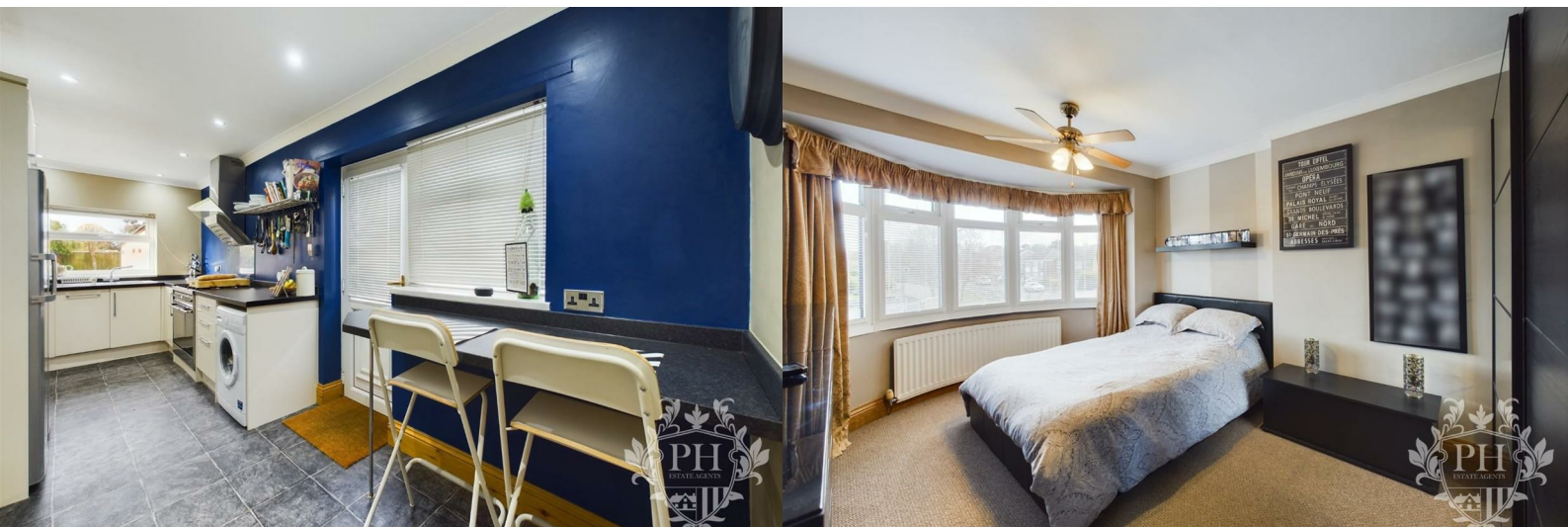




125 Lime Road

Normanby, Middlesbrough, TS6 0BZ

£185,000



# 125 Lime Road

Normanby, Middlesbrough, TS6 0BZ

£185,000



## HALLWAY

15'8 x 5'10 (4.78m x 1.78m)

Entering through a brown wooden door into a lovely bright and airy entrance hall with stairs to the first floor. There is a useful understairs cupboard and large central heated radiator. The hallway allows access to the two reception rooms and kitchen.

## RECEPTION ROOM

13'9 x 11'1 (4.19m x 3.38m)

The large reception room provides an ideal space for family time. The room benefits from a beautiful large bay fronted window looking onto the front of the property, providing an abundance of natural light. There is a large central heating radiator and a fire set in a feature surround with inset and hearth. This room is the perfect place to sit back and relax after a long day!

## DINING ROOM

14 x 11'01 (4.27m x 3.38m)

You are greeted by a spacious dining area, which benefits from high ceilings and provides the space for an extensive dining room table. The room gains access to the rear garden through a set of wooden French doors, making this room exceptionally bright and is perfect to be able to open the property up on those hot summer days.

## KITCHEN

19 x 8'6 (5.79m x 2.59m)

The kitchen has been extended and is ultra modern with masses of storage space in the white wall, base and drawer units. There is an integrated dishwasher and stainless steel sink with chrome mixer tap and space for a washing machine, fridge freezer and room for a large double oven. There is a uPVC door to the side aspect, which allows access to the driveway.

With contemporary ceiling spot lights and a separate breakfast bar, this really is the ideal place to cook up that family meal!

## LANDING

9'5 x 5'10 (2.87m x 1.78m)

The landing consists of grey carpet which flows from the hallway with a uPVC double glazed window to the side aspect of the property. It gains access to the three bedrooms, family bathroom & loft space.

## FAMILY BATHROOM

17'1 x 7'4 (5.21m x 2.24m)

Step inside this large, extended, dream bathroom! Boasting a freestanding bath, a modern vanity washbasin with a low-level wc, and a deluxe shower cubicle with rainfall showerhead that provides rejuvenation and

all exquisitely adorned with thoughtfully positioned spotlighting.

### MASTER BEDROOM

14'9 x 10'6 (4.50m x 3.20m)

The master bedroom is a fantastic size and features a radiator & a large uPVC double-glazed bay window which looks onto the front of the property. This room comfortably fits a king-size bed & storage, whilst still providing the capability to manoeuvre around.

### BEDROOM TWO

11'8 x 10'7 (3.56m x 3.23m)

The second bedroom is located at the back of the property and comprises carpet, uPVC double glazed window & radiator. This room is a double and comfortably fits a double bed and larger storage units at ease.

### BEDROOM THREE

7'7 x 6'6 (2.31m x 1.98m)

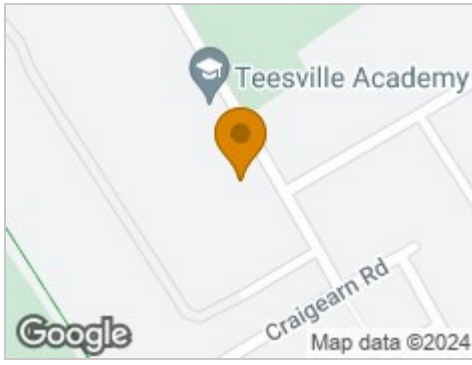
The third bedroom is set to the front of the property and is the smallest, however this room comfortably fits a single bed and smaller storage units and wardrobe. The room is neutrally decorated with cream carpet and painted walls.

### EXTERNAL

To the front of the property is a well maintained grassed area and to the side is a large driveway, providing off road parking and leading to a detached garage. There is a side gate which provides access to the rear enclosed garden, which is low maintenance with laid to lawn and decking areas which are perfect for social gatherings, or for relaxing on a sunny day!



## Road Map



## Hybrid Map



## Terrain Map



## Floor Plan



## Viewing

Please contact our Middlesbrough Office on 01642 462153 if you wish to arrange a viewing appointment for this property or require further information.

## Energy Efficiency Graph



These particulars, whilst believed to be accurate are set out as a general outline only for guidance and do not constitute any part of an offer or contract. Intending purchasers should not rely on them as statements of representation of fact, but must satisfy themselves by inspection or otherwise as to their accuracy. No person in this firm's employment has the authority to make or give any representation or warranty in respect of the property.