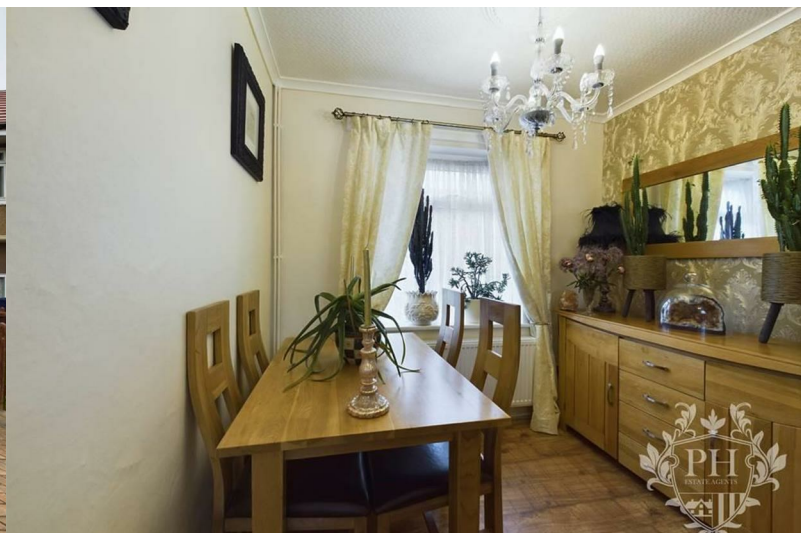




# 11 Newton Close

, Middlesbrough, TS6 9HS

Offers Over £129,995



# 11 Newton Close

, Middlesbrough, TS6 9HS

Offers Over £129,995



## HALLWAY

7'5" x 9'3" (2.26m x 2.82m )

Entering through a white UPVC double-glazed door you'll find a large hallway which gains access to the reception/ dining room, kitchen, understair storage & first floor.

## RECEPTION/ DINING ROOM

12'11" x 10'3" - 8'2" x 7'9" (3.94m x 3.12m - 2.49m x 2.36m )

The L shape reception/ dining room is a fantastic size to socialize and spend time with your family with a open plan look for a dining room table and two piece suite. This room features modern wood effect flooring with a beautiful log burning fire with surround set up and large UPVC double glazed windows to the front and rear providing a exceptional amount of natural light.

## KITCHEN

11'11" x 7'9" (3.63m x 2.36m )

The kitchen boasts a number of cream wall, base and draw units, plumbing for a washing machine, space for a fridge freezer, sink with mixer taps, and gas/electrical points for the cooker. This room provides the perfect space for cooking with minimal cleaning due to the wood worktops and wall tile surround and gains access to the large rear garden through a UPVC double glazed door.

## LANDING

2'10" x 12'4" (0.86m x 3.76m )

The landing is bright due to the UPVC double glazed window which looks to the front aspect of the property and gains access to the two bedrooms, family bathroom, separate W/C and loft space.

## BEDROOM ONE

12'4" x 10'4" (3.76m x 3.15m )

The main bedroom is a fantastic size and features a large radiator & UPVC double-glazed window which looks onto the front aspect of the property. This room comfortably fits a double bed & storage whilst still providing the ability to maneuver around with additional built-in storage cupboard with unique port hole internal door.

## BEDROOM TWO

12'4" x 8'1" (3.76m x 2.46m )

The second bedroom is also a double and is situated to the rear of the property the vendor has decorated this room in neutral colours making it bright and airy. The room provides space for bedside cabinets along with more extensive storage units, UPVC double-glazed window, and a large radiator below.

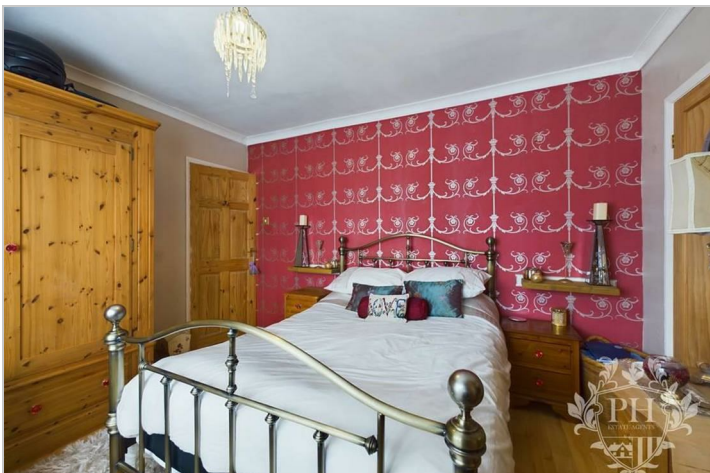
## FAMILY BATHROOM

4'9" x 5'3" (1.45m x 1.60m )

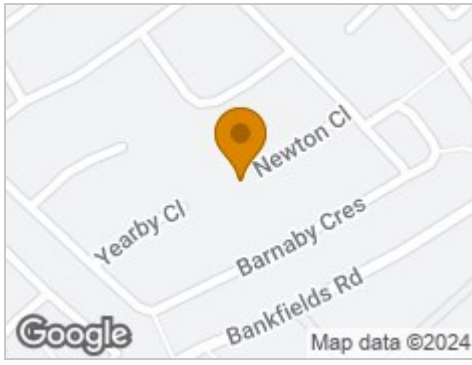
This modern family bathroom consists of a two piece suite which includes a paneled bath with over head electric shower & screen with a hand basin. This room has been well maintained and benefits from a frosted UPVC double glazed window to the rear aspect and stylish floor to ceiling wall cladding making it easy to clean and maintain. The toilet is separate to the bathroom in this property and the vendor has followed the theme of floor to ceiling wall cladding.

## EXTERNAL

The property offers a extensive driveway which will provide allocated off-street parking for two cars. To the rear is a beautiful landscaped garden with a astro-turfed area perfect for a outdoor table and chairs and gravel to make it low maintenance.



## Road Map



## Hybrid Map



## Terrain Map



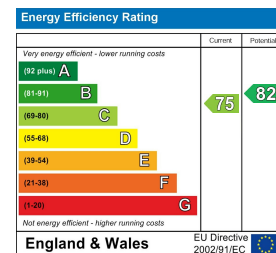
## Floor Plan



## Viewing

Please contact our Middlesbrough Office on 01642 462153 if you wish to arrange a viewing appointment for this property or require further information.

## Energy Efficiency Graph



These particulars, whilst believed to be accurate are set out as a general outline only for guidance and do not constitute any part of an offer or contract. Intending purchasers should not rely on them as statements of representation of fact, but must satisfy themselves by inspection or otherwise as to their accuracy. No person in this firm's employment has the authority to make or give any representation or warranty in respect of the property.