



# RESIDENTIAL

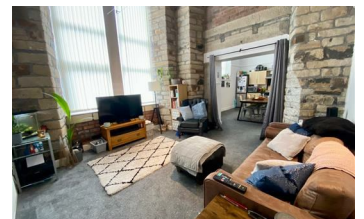
SALES | LETTINGS | PROPERTY MANAGEMENT



## 6 Saville Court, Huddersfield, HD3 4JT Offers In The Region Of £94,995



**\*REDUCED TO SELL\* \*OFFERED FOR SALE TO AN ARRAY OF BUYERS INCLUDING BUY TO LET INVESTORS WITH A SIT IN TENANT OR FIRST TIME BUYERS\*** "Are You Looking For A Stunning Apartment? Now offered FOR SALE in this stunning Mill Conversion at Saville Court of Milnsbridge and on the edges of Longwood, ADM Residential are pleased to market this tastefully decorated, two true double bedroom apartment which is situated in a charming converted mill. Ideally set on the ground floor, offering an abundance of charming features including stunning exposed stone walls, high ceilings and large windows which allow a flood of natural light. Located close to all village amenities and easy access towards Marsh Paddock and Lindley with the M62 Motorway Networks a few minutes away, popular transport links and just a few miles to Huddersfield town centre. There are well



- Luxury Apartment
- Two Double Bedrooms
- Modern Kitchen/Dining
- Secure Intercom Entry
- Great Location
- Ground Floor Access
- Open Plan Living
- Two Bathrooms
- Parking Space

55 Market Street, Milnsbridge, Huddersfield, HD3 4HZ  
T: 01484 644555 | E: sales@admresidential.co.uk  
www.admresidential.co.uk

