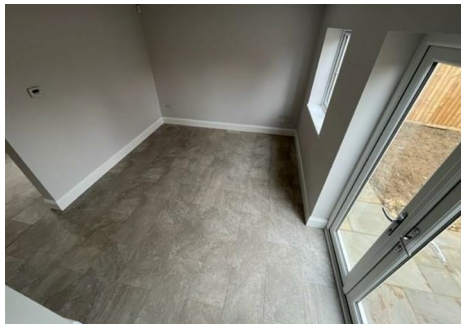




STEVENS PROPERTY
MANAGEMENT



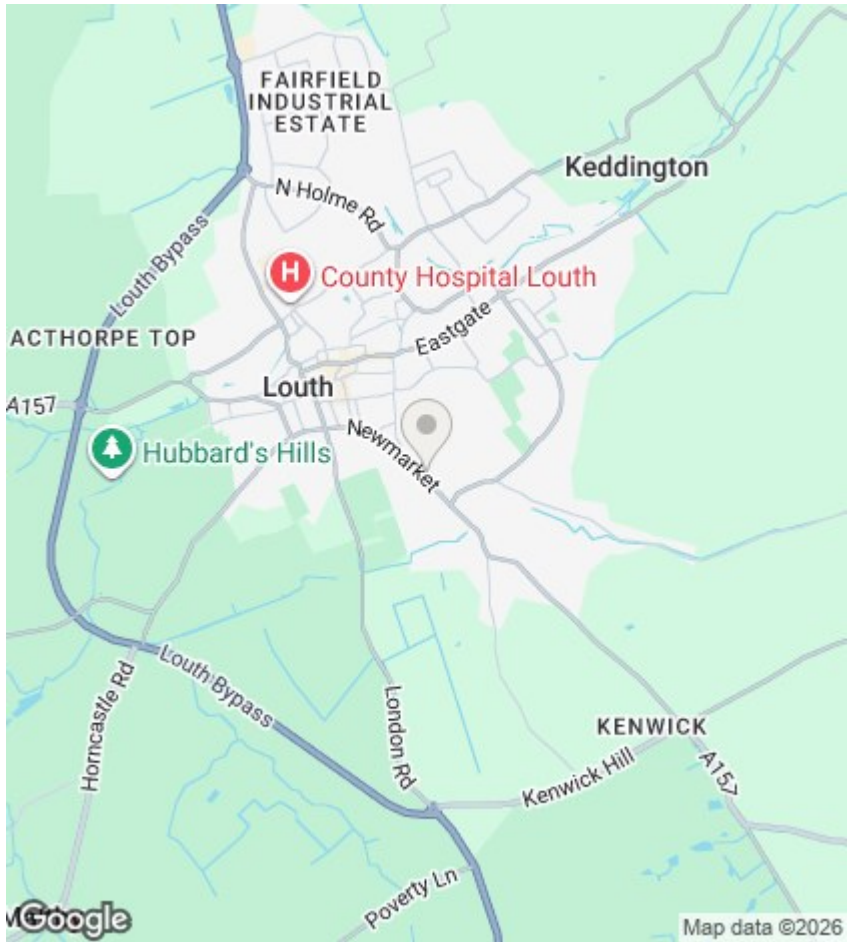
Newmarket, Louth, LN11 9EJ

£780 Per Calendar Month

- Recently built
- Kitchen/Diner
- Driveway
- GSC, Mains drainage FTTC
- 2 Double bedrooms
- Family Bathroom with shower and bath
- Rear garden
- Standard, Superfast and Ultrafast broadband speeds available at this property.

13 Cornmarket, Louth, Lincolnshire, LN11 9PY
01507 605 721

enquiries@stevenspropertymana
www.stevenspropertymanageme



Directions

Viewings

Viewings by arrangement only. Call 01507 605 721 to make an appointment.

Council Tax Band:

B

EPC Rating:

B

