



STEVENS PROPERTY
MANAGEMENT



Starks Row , Fulstow

RENT £695 PCM DEPOSIT £800
COUNCIL TAX BAND A EPC 78

- Sympathetically Restored 2 Bedroom Cottage
- Allocated Parking/ Front Garden only
- Wood Burning stove
- Open Plan Kitchen/Living Area
- Air Source heating
- Mains Drainage

13 Cornmarket, Louth, Lincolnshire, LN11 9PY
01507 605 721

enquiries@stevenspropertymana
www.stevenspropertymanagem



Directions

Viewings

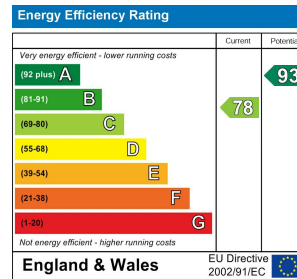
Viewings by arrangement only. Call 01507 605 721 to make an appointment.

Council Tax Band:

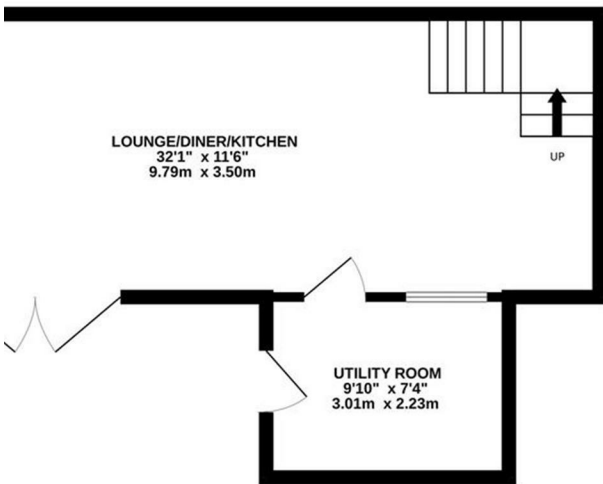
A

EPC Rating:

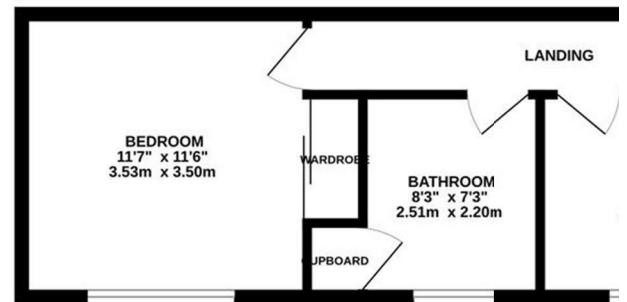
C



GROUND FLOOR
441 sq.ft. (41.0 sq.m.) approx.



1ST FLOOR
369 sq.ft. (34.3 sq.m.) approx.



TOTAL FLOOR AREA : 810 sq.ft. (75.3 sq.m.) approx.

Whilst every attempt has been made to ensure the accuracy of the floorplan contained here, measurements of doors, windows, rooms and any other items are approximate and no responsibility is taken for any error, omission or mis-statement. This plan is for illustrative purposes only and should be used as such by any prospective purchaser. The services, systems and appliances shown have not been tested and no guarantee as to their operability or efficiency can be given.

Made with Metropix ©2024