



STEVENS PROPERTY
MANAGEMENT

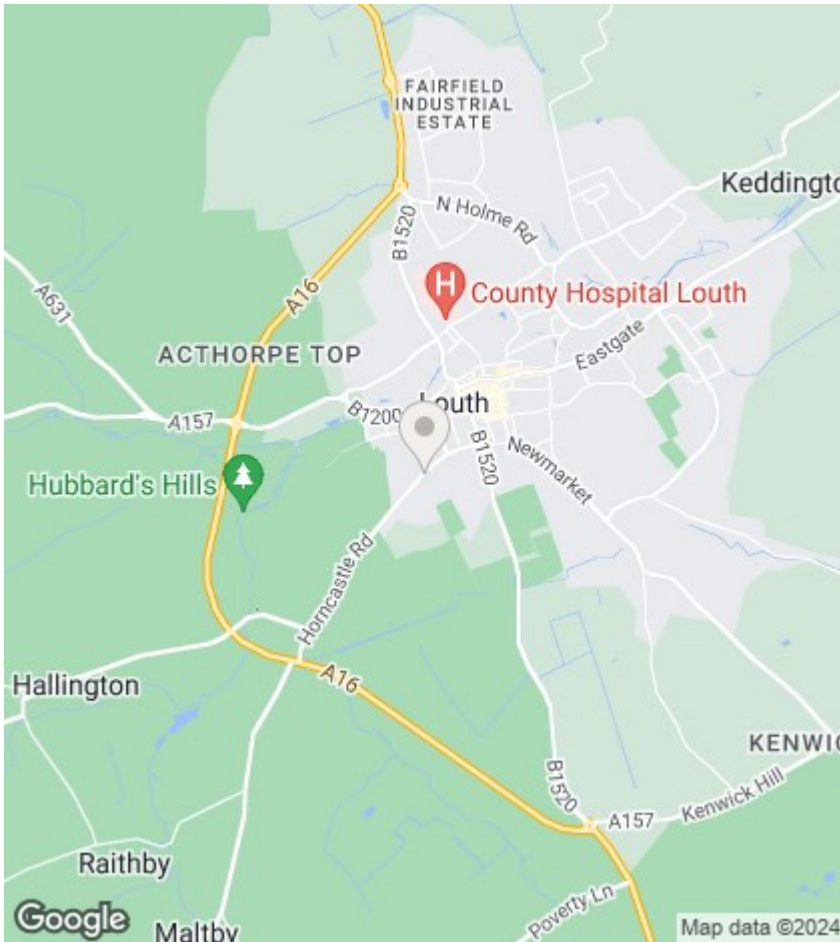


Horncastle Road, Louth

RENT £1,100 PCM DEPOSIT £1,265

COUNCIL TAX BAND C EPC 52

- Detached Family Residence
- 2 Reception Rooms
- Desirable Location
- Enclosed Rear Garden
- Garage and Driveway
- Mains Drainage/FTTC & Gas Central Heating.



Directions

Viewings

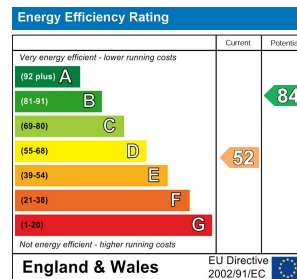
Viewings by arrangement only. Call 01507 605 721 to make an appointment.

Council Tax Band:

C

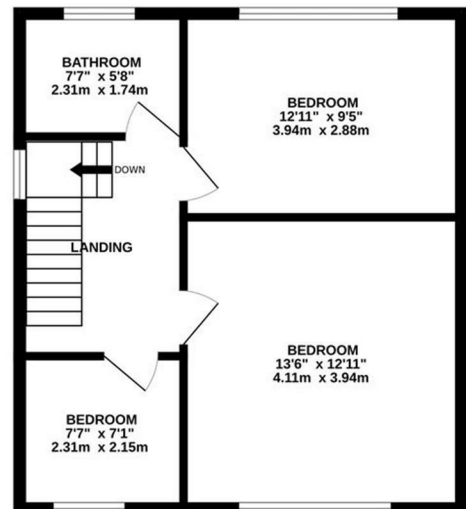
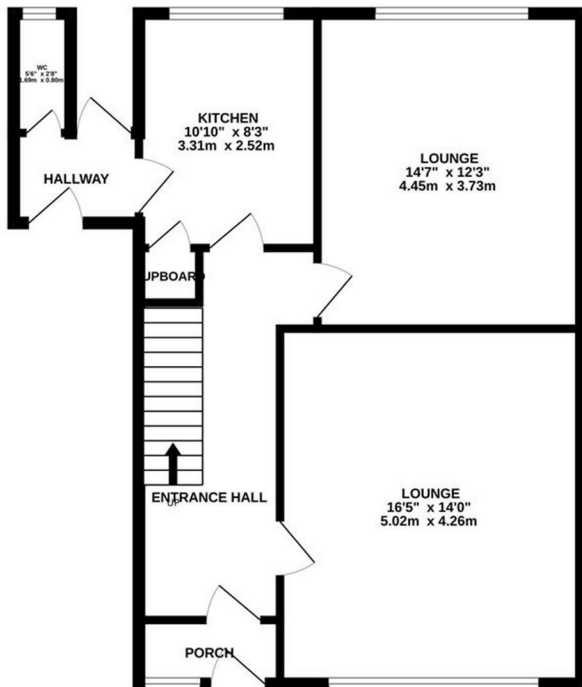
EPC Rating:

E



676 sq.ft. (62.8 sq.m.) approx.

470 sq.ft. (43.7 sq.m.) approx.



TOTAL FLOOR AREA : 1146 sq.ft. (106.5 sq.m.) approx.

Whilst every attempt has been made to ensure the accuracy of the floorplan contained here, measurements of space, without name and any other items are approximate and no responsibility is taken for any error.