



STEVENS PROPERTY
MANAGEMENT



The Gatherums, Queen Street Place

RENT £625 PCM DEPOSIT £720

COUNCIL TAX BAND EPC 69

- TWO BEDROOMS
- PARKING SPACE
- REAR COURTYARD
- LOUNGE/DINER
- GAS CENTRAL HEATING
- DOWNSTAIRS WC

13 Cornmarket, Louth, Lincolnshire, LN11 9PY
01507 605 721

enquiries@stevenspropertymana
www.stevenspropertymanagem



Directions

Viewings

Viewings by arrangement only. Call 01507 605 721 to make an appointment.

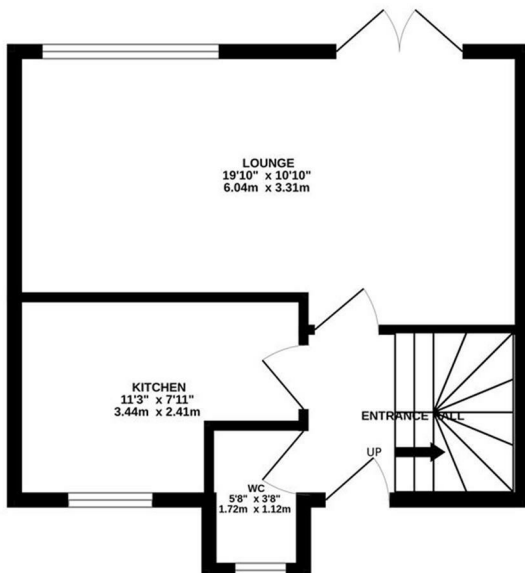
Council Tax Band:

EPC Rating:

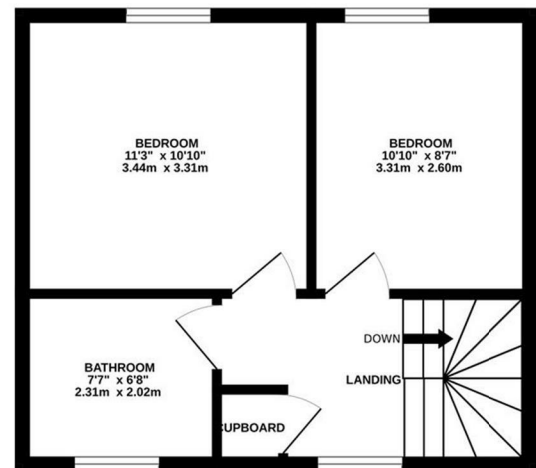
C

Energy Efficiency Rating		Current	Potential
Very energy efficient - lower running costs			
(92 plus) A			85
(81-91) B			
(69-80) C		69	
(55-68) D			
(39-54) E			
(21-38) F			
(1-20) G			
Not energy efficient - higher running costs			
England & Wales		EU Directive 2002/91/EC	

GROUND FLOOR
357 sq.ft. (33.2 sq.m.) approx.



1ST FLOOR
347 sq.ft. (32.2 sq.m.) approx.



TOTAL FLOOR AREA : 704 sq.ft. (65.4 sq.m.) approx.

Whilst every attempt has been made to ensure the accuracy of the floorplan contained here, measurements of doors, windows, rooms and any other items are approximate and no responsibility is taken for any error, omission or mis-statement. This plan is for illustrative purposes only and should be used as such by any prospective purchaser. The services, systems and appliances shown have not been tested and no guarantee as to their operability or efficiency can be given.
Made with Metropix ©2024