



The Barn,
Woodstock Road, Holm, KW17 2SB

OFFERS OVER £65,000



The Barn has planning consent (OIC ref 23/151/PP) and Building Warrant (OIC Ref 23/233) to renovate and extend to create a spacious 2 bedroom dwelling. The property enjoys an outstanding panoramic view, including 3 lighthouses, 8 islands and Scapa Flow from its elevated position.

The property extends to 1650m², or thereby, and the connection for mains electricity is close by with mains water approximately 100m away.

LOCATION

The Barn is situated approximately 8 miles from Kirkwall and 3 miles from St Andrews primary School.

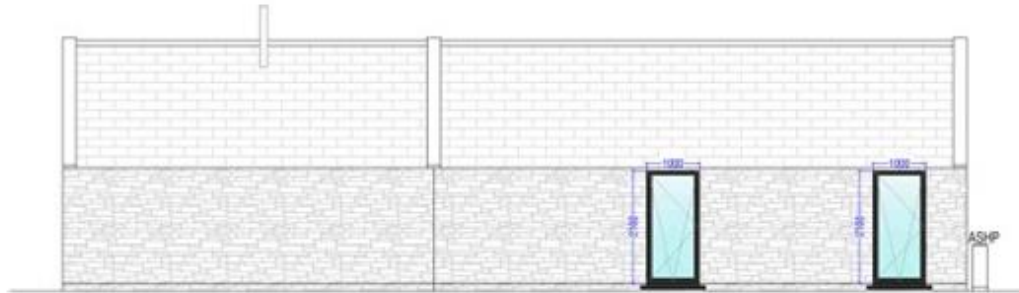




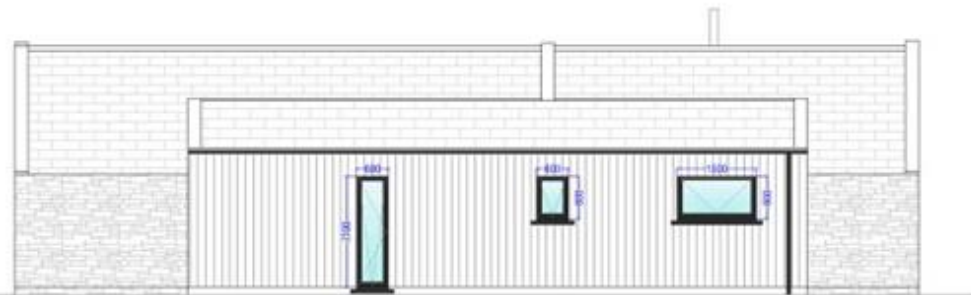
SOUTH WEST ELEVATION



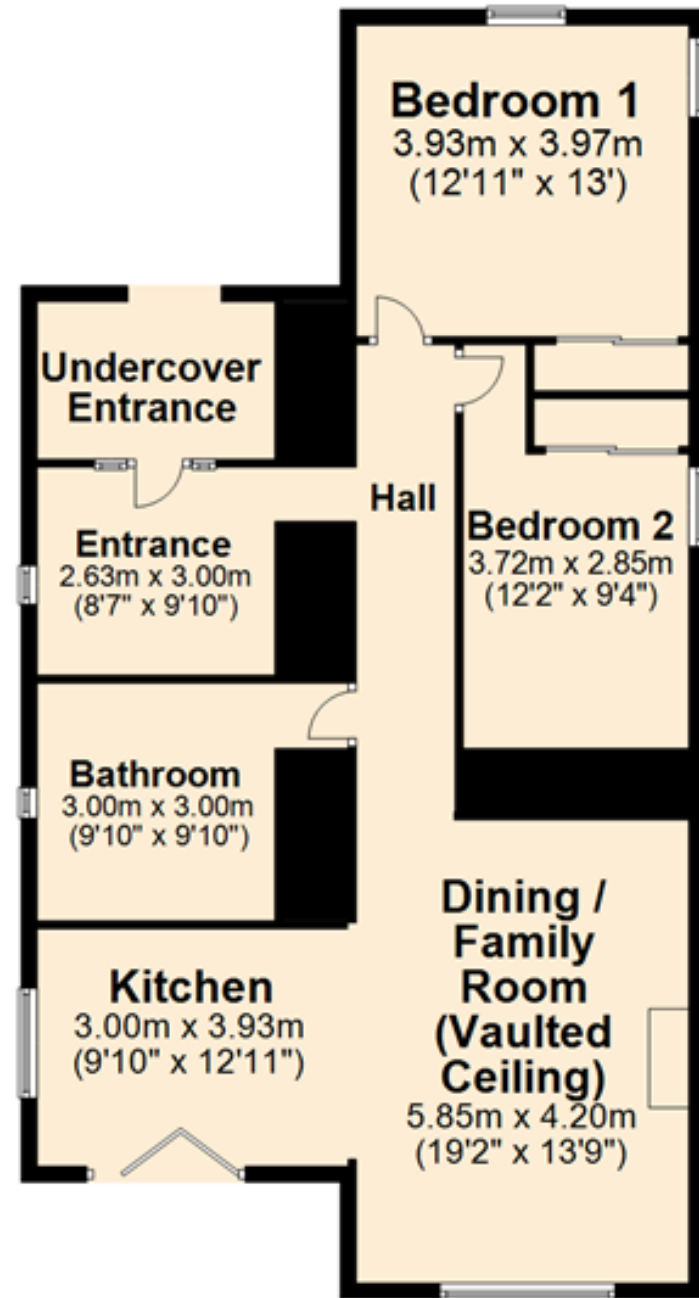
NORTH EAST ELEVATION

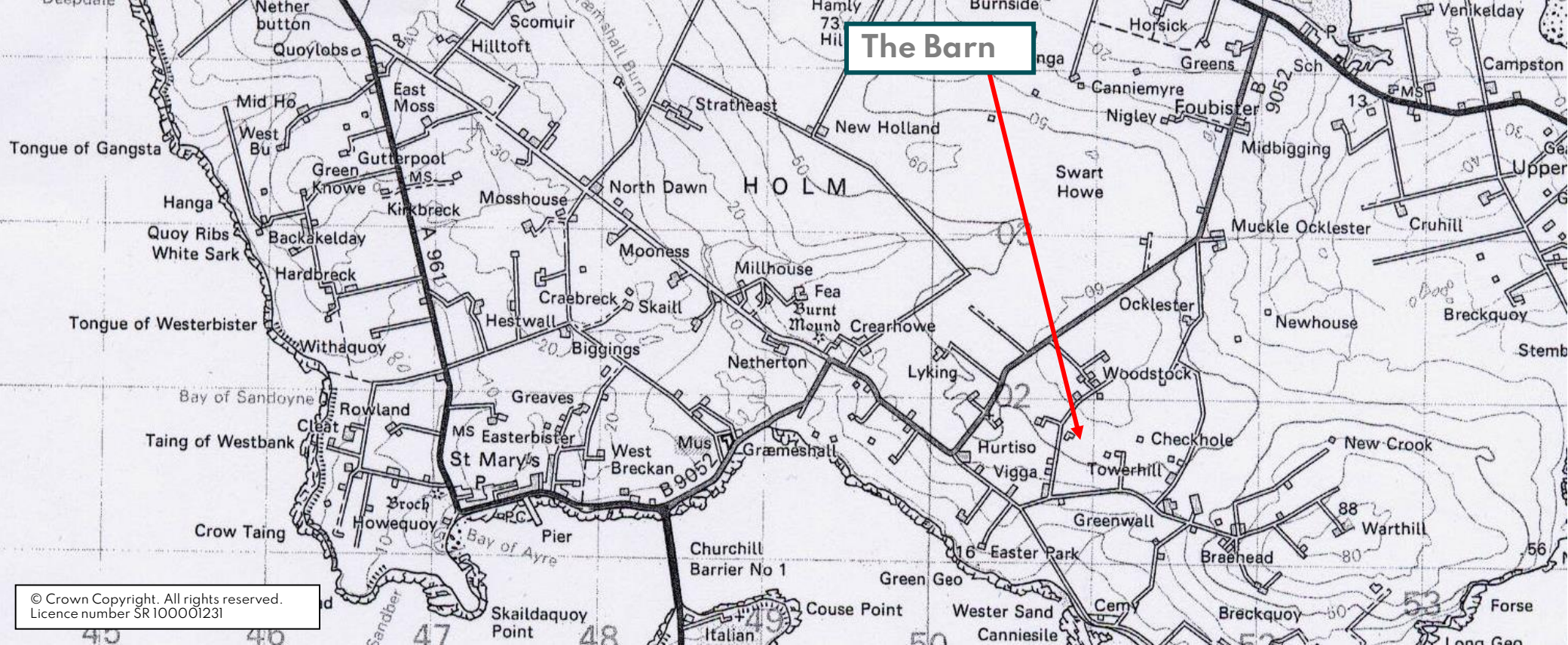


SOUTH EAST ELEVATION



NORTH WEST ELEVATION





© Crown Copyright. All rights reserved.
Licence number SR 100001231

SERVICES – Mains electricity close by. Mains water approximately 100m away.

ENTRY – By arrangement.

VIEWING - For an appointment to view please contact Lows Property Department.

PRICE – Offers Over £65,000.

Further enquiries should be directed to Lows Property Department, with whom all offers should be lodged in writing.

Lows Solicitors – Estate Agents
5 Broad Street, Kirkwall, Orkney, KW15 1DH
T: 01856 873151 F: 01856 875450 W:
www.lowsorkney.co.uk

rightmove 
find your happy

EJP

The following notes are of crucial importance to intending viewers and/or purchasers of the property.

1. These particulars do not form part of any offer or contract and all statements and measurements contained herein are believed to be correct but are not guaranteed, and any intending purchaser must satisfy themselves as to their accuracy. Prospective purchasers are advised to have their interest noted through their solicitors as soon as possible in order that they may be informed in the event of an early closing date being set for receipt of offers.
2. No responsibility can be accepted for any expenses incurred by intending purchasers in inspecting properties which have been sold or withdrawn.