



Parlgo, extending to 1 acre or thereby,
Sanday, KW17 2AY

OFFERS OVER £120,000





Parlgo is a 2-3 bedroom detached dwelling on the isle of Sanday set in an acre or thereby with a range of outbuildings including 2 large sheds, greenhouse and chicken and pigeon accommodation.

The property has sea views over North Bay and Otterswick.

There is an enclosed garden and a field.

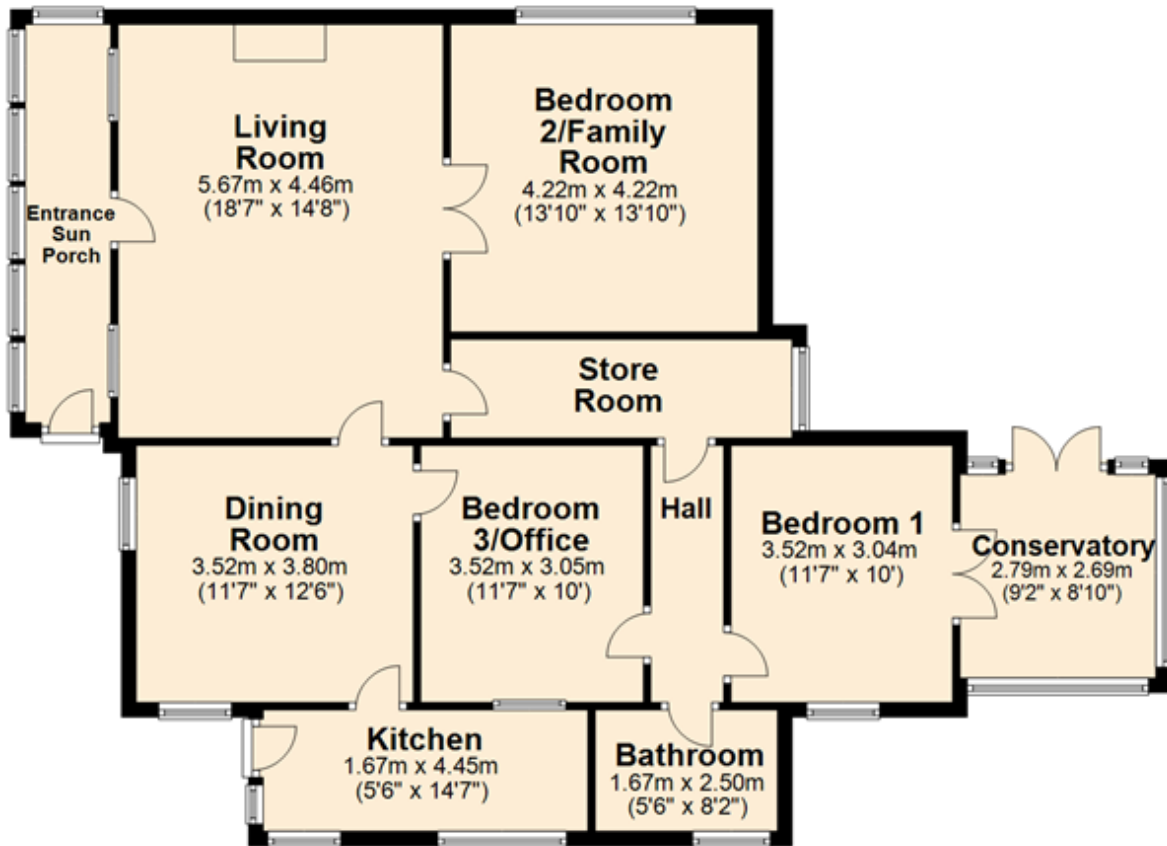
- UPVC framed double glazed windows and doors.
- Oil central heating.
- Entrance sun porch.
- Living room with multi fuel stove.
- Kitchen with access to garden.
- Dining room with space for table and chairs.
- Bedroom 2/family room.
- Bedroom 3/office.
- Conservatory accessed through bedroom 1.
- Bathroom.
- Store room.
- Parking area.
- Enclosed garden.
- Field.
- 2 large sheds. Greenhouse. Small shed.
- Chicken shed. Pigeon shed.
- Sea views towards North Bay and Otterswick.

LOCATION

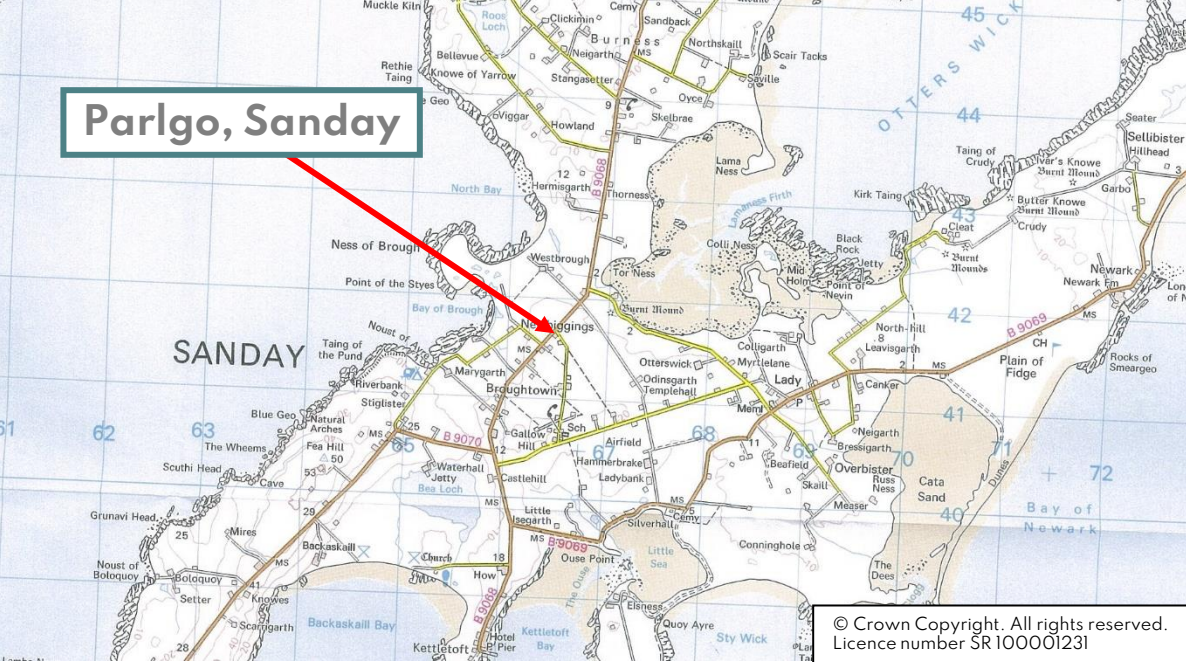
Parlgo is situated on the island of Sanday which is one of Orkney's outer north isles. Local amenities include a primary and junior secondary school, airport, general stores, post office, doctor's surgery, Heritage Centre, cafes and hotels. There are beautiful beaches and points of natural history.







Parlgo, Sanday



SERVICES – Mains water and electricity. Private septic tank.

COUNCIL TAX BAND – Band A. The Council Tax Band may be reassessed by the Orkney and Shetland Joint Board when the property is sold. This may result in the band being altered.

ENERGY PERFORMANCE RATING – Band E.

ENTRY – By arrangement.

FIXTURES & FITTINGS – Most of the contents of the property including curtains, blinds, white goods and furniture are included in the sale price.

VIEWING - For an appointment to view please contact Lows Property Department.

PRICE – Offers Over £120,000.

Further enquiries should be directed to Lows Property Department, with whom all offers should be lodged in writing.

Lows Solicitors – Estate Agents
5 Broad Street, Kirkwall, Orkney, KW15 1DH
T: 01856 873151 F: 01856 875450 W:
www.lowsorkney.co.uk

rightmove 
find your happy

ETCN

The following notes are of crucial importance to intending viewers and/or purchasers of the property.

1. These particulars do not form part of any offer or contract and all statements and measurements contained herein are believed to be correct but are not guaranteed, and any intending purchaser must satisfy themselves as to their accuracy. Prospective purchasers are advised to have their interest noted through their solicitors as soon as possible in order that they may be informed in the event of an early closing date being set for receipt of offers.
2. No responsibility can be accepted for any expenses incurred by intending purchasers in inspecting properties which have been sold or withdrawn.