



# New Prime Offices Now Available To Rent In Oldham



**50% LET**



# New Prime Offices Now Available To Rent In Oldham

Annie Kenney Mill is a brand new office space designed for modern business. It offers flexible office space available over three floors, which can be let as single occupancy, by the floor, or by smaller suites.

- From 2,130sq ft - 9,646sq ft
- A professional work environment
- Configure the space that works for you
- Next to junction 22 of the M60
- Adjacent to Hollinwood Metrolink Station
- Manchester City Centre in 15 minutes
- Manchester Airport in 25 minutes
- EV charging points and photovoltaic solar panels

**For availability and enquiries please contact:**

**Paul Nolan**

Paul@nolanredshaw.co.uk

T 0161 763 0828

M 0771 178 8325

**Richard Wharton**

Richard.Wharton@jll.com

T 0161 828 6440

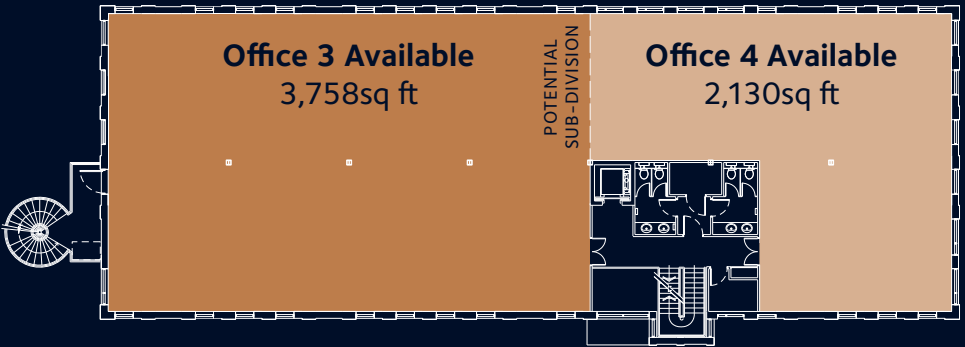
M 0797 093 8698



# Floorplans



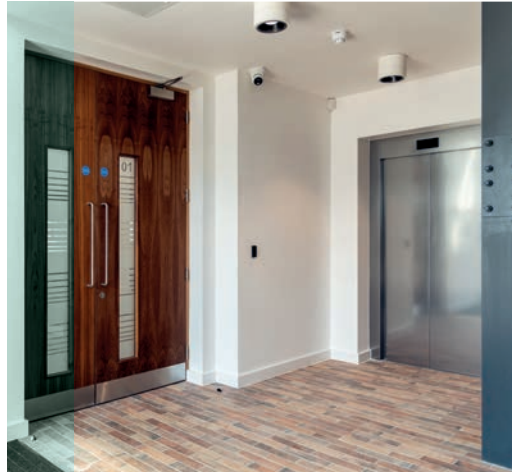
**Second Floor** Available: 3,758sq ft



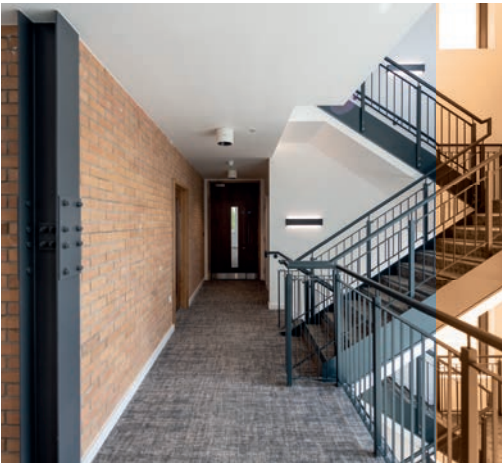
**First Floor** Available: 5,888sq ft



**Ground Floor** Not Available









## Ideally located for your business needs

**Annie Kenney Mill**  
**Hudson Street**  
**Chadderton**  
**OLDHAM**  
**OL9 7FQ**

You can also find us using  
the **what3words**  
app with **joins.pink.cubs**

**the-mills.co.uk**



## For availability and enquiries please contact

**Nolan  
Redshaw**

**Paul Nolan**

Paul@nolanredshaw.co.uk

T 0161 763 0828 M 0771 178 8325



**Richard Wharton**

Richard.Wharton@jll.com

T 0161 828 6440 M 0797 093 8698

### MISREPRESENTATION ACT 1967

1. These details do not form part of an offer or contract.
2. They intend to give a fair description but neither Nolan Redshaw Ltd nor the Vendor/Lessor accepts responsibility for any error they may contain.
3. Purchasers or prospective tenants should satisfy themselves by inspection of the premises.
4. No person in the employ of Nolan Redshaw Ltd has authority to give any representation or warranty in relation to this property.
5. Prices/Rents are exclusive of VAT.
6. Subject to contract.

### PROPERTY MISDESCRIPTION ACT 1991

These details are believed to be correct at the time of compilation, but may be subject to subsequent amendment.