



Carnatic House, Carnatic Road, Mossley Hill, L18 8DR

- Executive Three Bedroom Second Floor Luxury Apartment
- Meticulously Designed with High End Fixtures & Fittings
- Three Beautifully Presented & Spacious Double Bedrooms
- South Facing Balcony Overlooking Landscaped Grounds
- Located in Picturesque South Liverpool Neighbourhood
- Bespoke Open Plan Lounge Kitchen and Diner with Pantry
- Opulent Ensuite Facilities to All Bedrooms & Guest WC
- Resident Access to Secure Underground Off-Road Parking



£850,000



move
residential

CGI Renders-Representative of a Work In Progress and Final Design and Specifications Are Subject To Change



move
residential

CGI Renders-Representative of a Work In Progress and Final Design and Specifications Are Subject To Change





move
residential

CGI Renders- Representative of a Work in Progress and Final Design and Specifications are Subject to Change

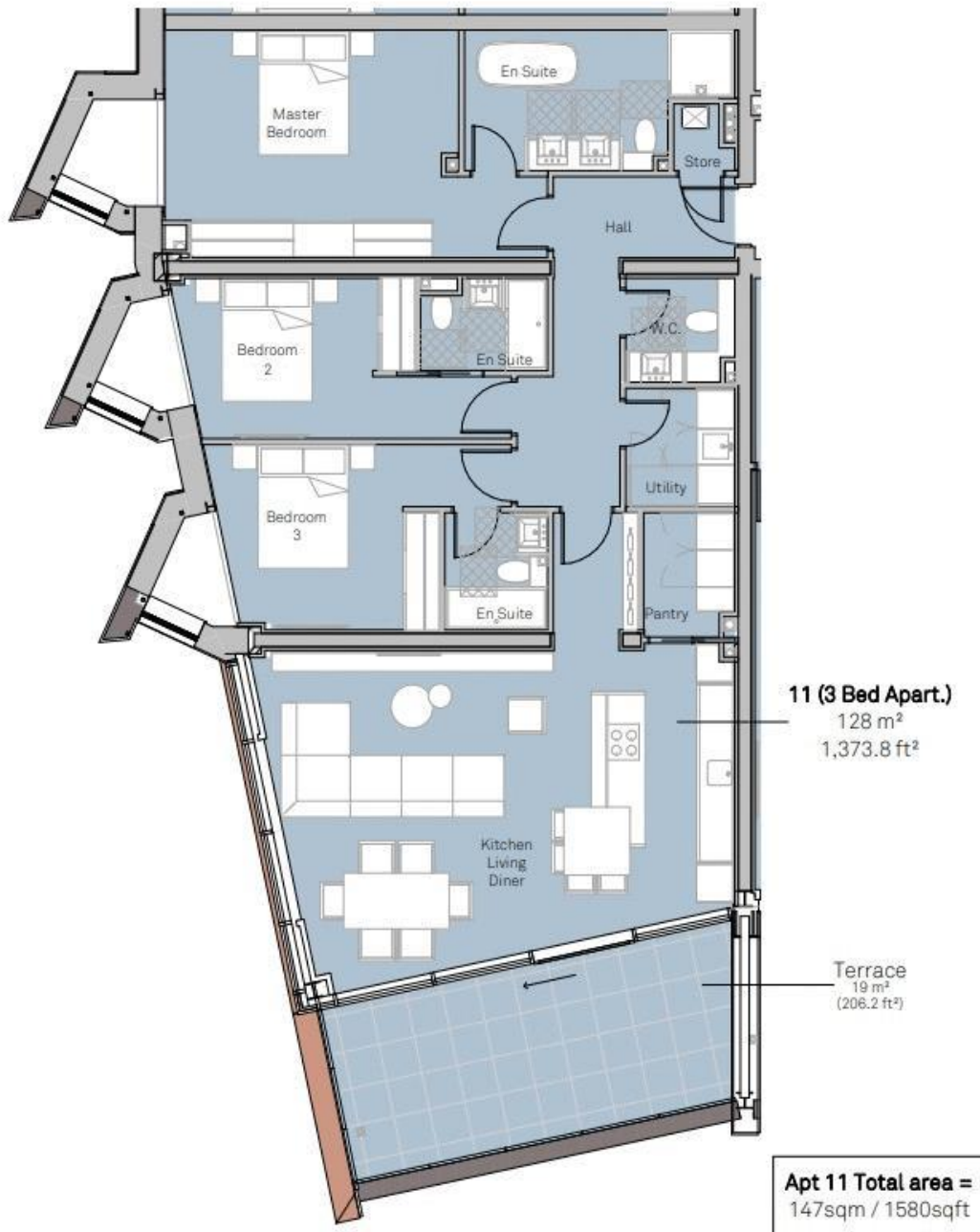
Description

Located on the second floor, you will find this executive three-bedroom apartment. Bathed in natural light throughout, the property offers the ultimate luxury living experience with tailored details and high-spec fixtures and fittings. Comprising an impressive open plan lounge, kitchen and diner – perfect for sociable living and entertaining guests, the property also offers sliding patio doors that open out to an enviable terrace balcony area that overlooks Carnatic House' wonderfully landscaped surroundings whilst enjoying a south facing aspect. Additionally, the apartment includes a guest WC and a pantry for added convenience. The bedroom accommodation consists of three beautifully presented and generously sized double bedrooms that each benefit from opulent en suite facilities and custom-built fitted storage space. Residents within the development will benefit from an allocated parking space in the underground car park.

Location

Carnatic House is ideally located in the vibrant heart of South Liverpool, offering residents a coveted address just a stone's throw away from the historic Sefton Park. Nestled in this picturesque neighbourhood, Carnatic House provides a unique blend of modern luxury and serene surroundings. Residents can enjoy the convenience of urban living while being immersed in the natural beauty and cultural richness that Sefton Park has to offer. The strategic placement of Carnatic House ensures easy access to local amenities, cultural attractions, and the lush greenery of Sefton Park, creating a distinctive living experience at the intersection of comfort and elegance.

Floor Plan



Additional Information

These particulars are thought to be materially correct though their accuracy is not guaranteed and they do not form part of any contract. All measurements are approximate and we have not tested any fitted appliances, electrical or plumbing installation or central heating systems. Floor plans are for illustration purposes only and their accuracy is not guaranteed.