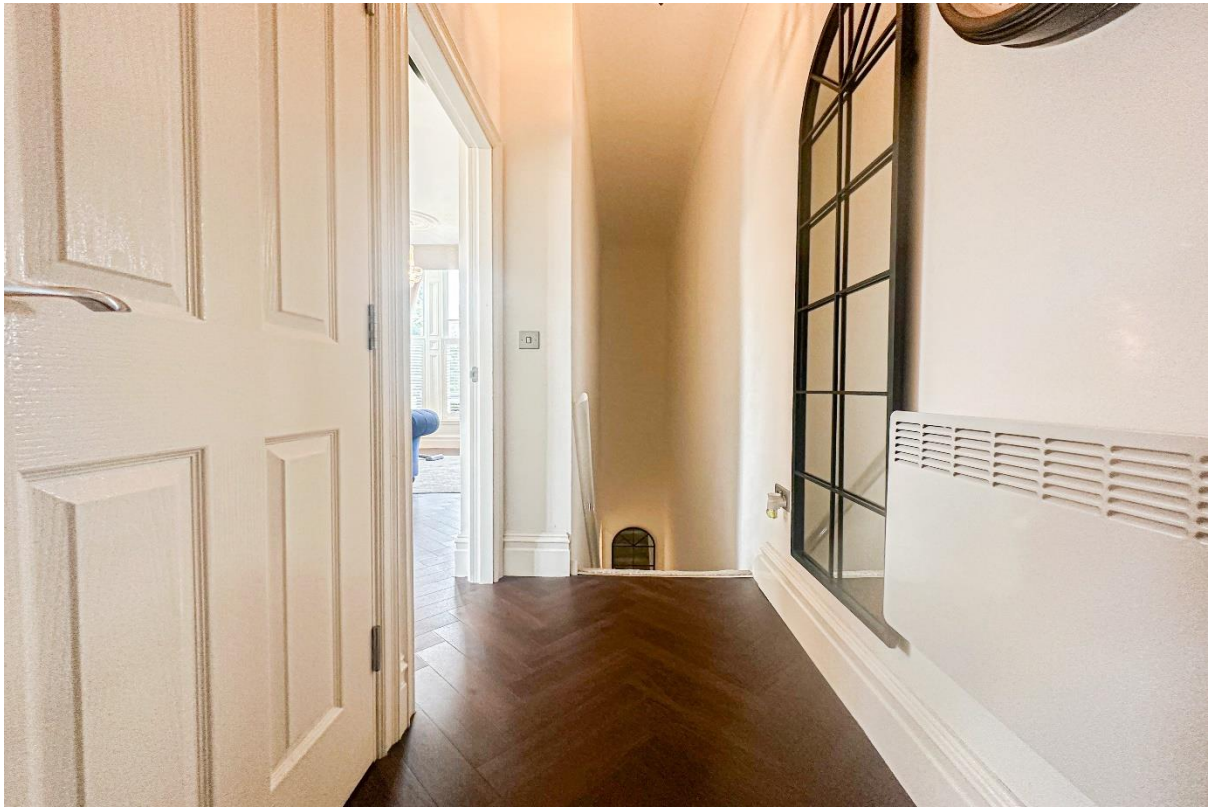


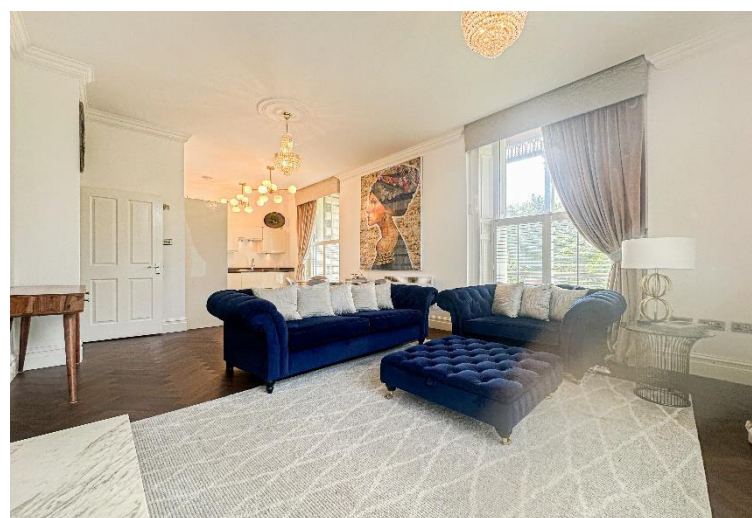
Windermere Terrace, Princes Park, Liverpool, L8 3AE

- Exceptional Two Bedroom Duplex Apartment
- Immaculately Presented & Full Of Character
- Sensational Kitchen, Dining & Living Space
- Contemporary Bathroom & Additional WC
- Located In The Leafy Suburb Of Princes Park
- Opportunity For Those Looking To Downsize
- Two Bright & Beautifully Finished Bedrooms
- Balcony With Scenic Views Over The Park



Offers Over £315,000













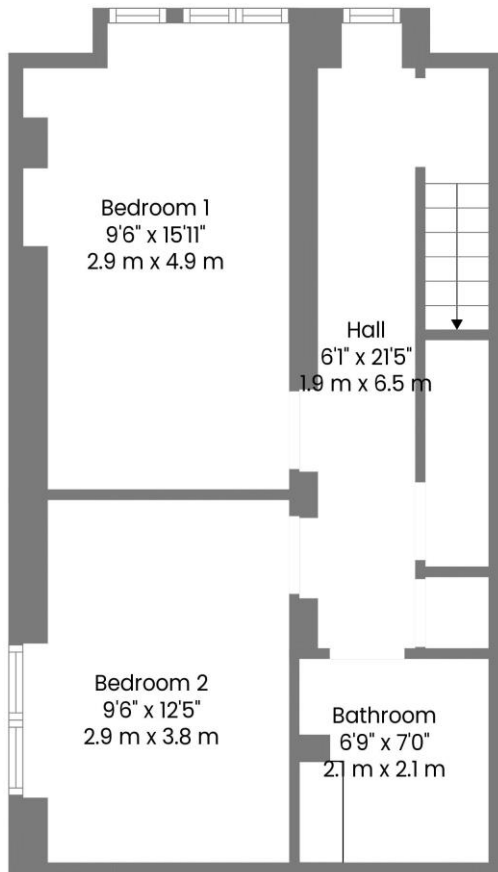
Description

Tucked away in a peaceful location in the leafy and desirable suburb of Princes Park, L8, is this exceptional two bedroom duplex apartment, proudly presented to the sales market courtesy of appointed agents Move Residential. Occupying a corner plot, the property boasts well-proportioned accommodation set over two floors and showcases immaculately presented interiors which have been finished to high specifications throughout. Boasting a plethora of charming original features, this apartment offers the perfect blend of character and modern living, presenting an opportunity not to be missed for those looking to downsize. Accessed via a well-maintained communal entrance, you are welcomed into the property by an inviting entrance hall which leads through to a showstopping open plan kitchen, dining and living space. Enjoying huge windows which flood the room with natural light, and finished in a refined décor which complements the attractive herringbone style flooring and ornate coving, this presents an elegant setting for relaxing and entertaining guests. The kitchen is complete with a range of stylish fitted base and wall units, complementary worktops providing plentiful surface space, and a selection of integrated appliances. This space further benefits from access out to a fabulous balcony which wraps around the exterior of the apartment and offers scenic views across the park, providing a serene spot for soaking up the sun and enjoying al-fresco dining. Concluding this floor is a convenient WC. Descending the staircase to the lower ground level you will discover the sleeping accommodation, consisting of two generously sized and beautifully presented double bedrooms, each impeccably presented featuring plush carpeting throughout. Adding the finishing touch to the interior of this wonderful apartment is a contemporary style three-piece family bathroom suite. Externally, residents further benefit from secure gated access and allocated parking.

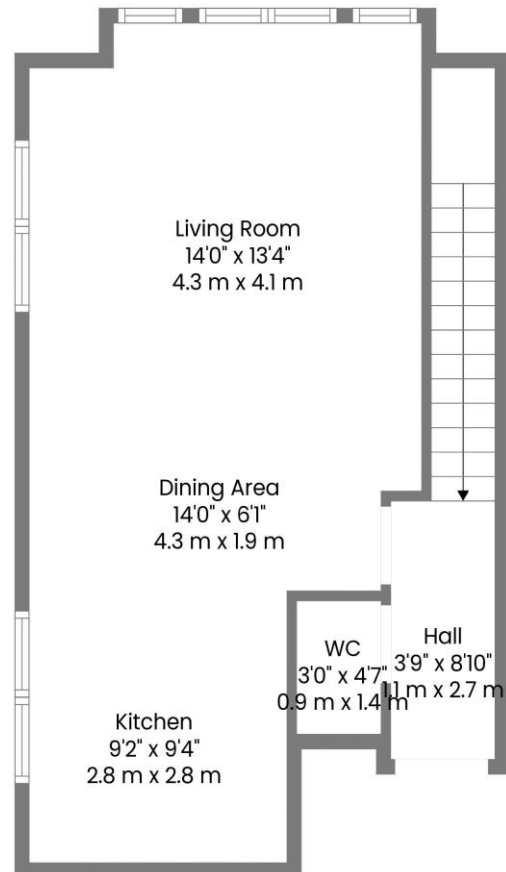
Location

Princes Park is a lush and vibrant suburb located in the L8 area of Liverpool. It is one of the most popular neighbourhoods in the city, offering a tranquil and picturesque setting whilst still being conveniently close to the city centre. The area is characterized by its tree-lined streets, Victorian homes, and excellent community amenities. The area is home to some of Liverpool's most beautiful parks, with its eponymous park being a particular highlight. Princes Park features picturesque lakes, ornate gardens, and a popular running track, making it an excellent place for outdoor activities or relaxing strolls. There are also numerous trendy cafes, restaurants, and bars in the vicinity, offering a diverse choice of cuisine and social activities. Local amenities include supermarkets, good schools, a large hospital and good transport links, including buses and trains to the city centre.

Floor Plan



Floor 1



Floor 2

EPC Summary

Score	Energy rating	Current	Potential
92+	A		
81-91	B		
69-80	C		
55-68	D	58 D	58 D
39-54	E		
21-38	F		
1-20	G		

Additional Information

These particulars are thought to be materially correct though their accuracy is not guaranteed and they do not form part of any contract. All measurements are approximate and we have not tested any fitted appliances, electrical or plumbing installation or central heating systems. Floor plans are for illustration purposes only and their accuracy is not guaranteed.