



Chester Walk, Huyton, Liverpool, L36 1UL

- Delightful Three Bedroom Mid Terrace Property
- Generous & Well-Presented Living Proportions
- Sizable Fitted Kitchen With Convenient Utility
- Modern Family Bathroom With Separate WC
- Located In Popular Residential Area Of Huyton
- Entrance Hall & Beautifully Presented Lounge
- Three Bright & Well-Proportioned Bedrooms
- Substantial Lawned Rear Garden With Shed



Offers Over £150,000

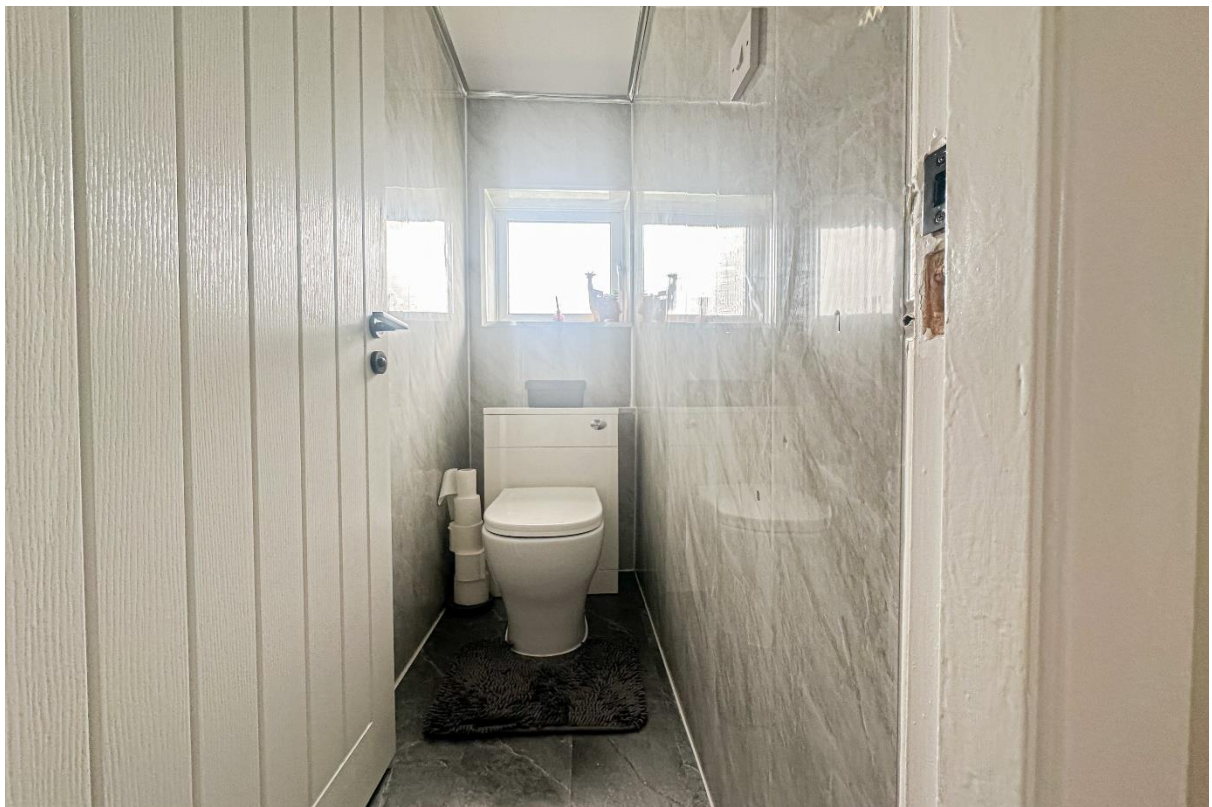














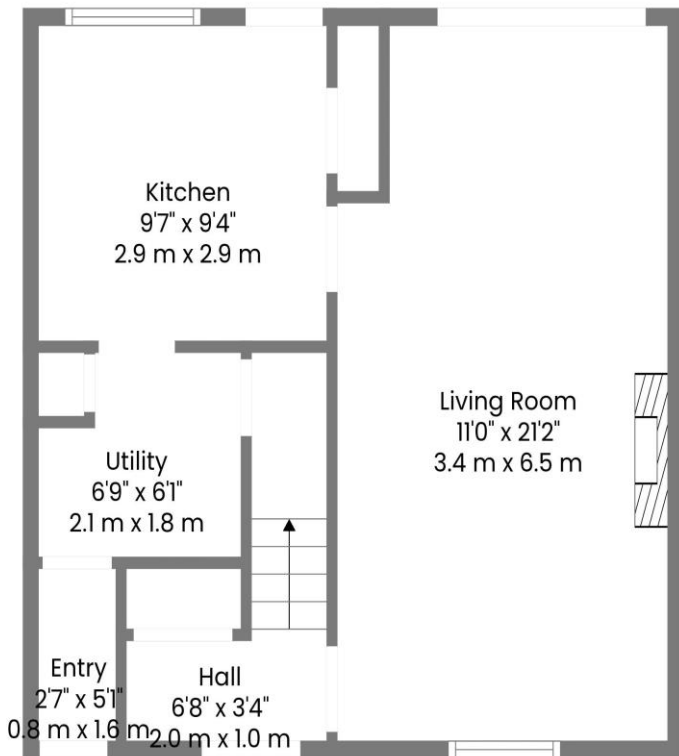
Description

This delightful three bedroom mid terrace property, located on Chester Walk in the highly popular residential area of Huyton, L36, is welcomed to the sales market by appointed agents Move Residential. Well-proportioned and finished to an excellent standard throughout, this promises to make a wonderful future home for a growing family. Following through the entrance hall, you are led into a bright and spacious through lounge which enjoys a set of sliding doors out to the rear, providing garden views and flooding the space with natural light. Finished in a tasteful décor featuring an eye-catching fireplace and attractive wood style flooring, this presents a welcoming space to relax and entertain guests. This is followed by a sizable kitchen complete with a range of fitted units and plentiful surface space, leading through to a convenient utility room. Continuing up to the first floor, you will discover three generously sized and beautifully finished bedrooms, boasting plush carpeting throughout, accompanied by a contemporary style family bathroom suite alongside a separate WC. Externally, the property further benefits from a substantial lawned garden to the rear which offers ample room for recreational activities and al-fresco dining.

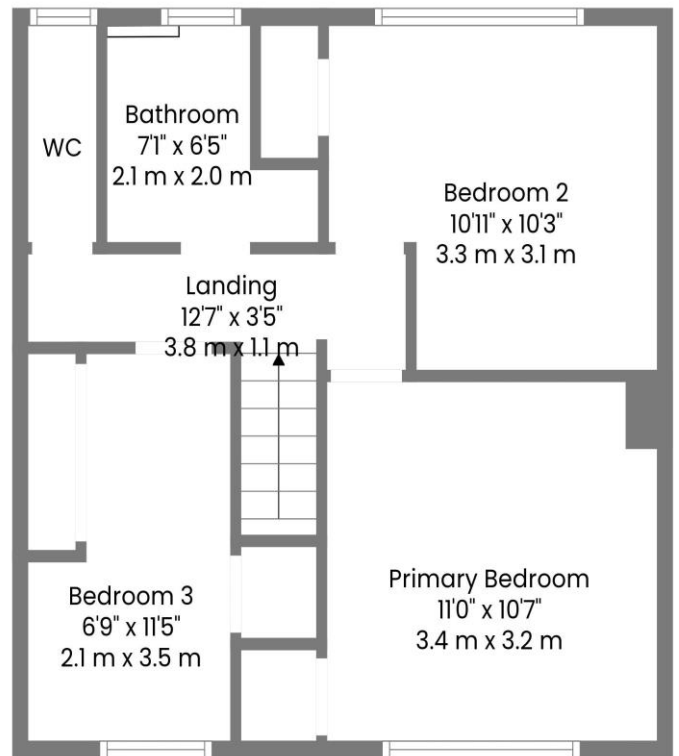
Location

Part of the Metropolitan Borough of Knowsley and substantially located within the Merseyside green belt Huyton is approximately 6 miles from Liverpool City Centre and, as such, has its own history and its own 'town' centre. The original village of Huyton was largely developed in the 1930s by Liverpool City Council to accommodate families from the City Centre. The area's large shopping centre (which includes an Asda Walmart complex, an indoor market and over 100 other shops) is still referred to as 'The Village'. In addition there are 8 parks, including Jubilee Park which is just opposite the property, a library, which houses a contemporary art gallery, two leisure centres, two 18 hole golf courses and a cricket club. Schools include Huyton Arts and Sports Centre, Christ the King and Cardinal Heenan. Railway stations on the famous Liverpool and Manchester Railway can be found in both Huyton and Roby and the proximity of the M62 and M57 motorways makes for easy travel connections. Offering something for everyone, L36 is a very valid alternative to the City.

Floor Plan



Floor 1



Floor 2

TOTAL: 851 sq. ft, 79 m2

FLOOR 1: 407 sq. ft, 38 m2, FLOOR 2: 444 sq. ft, 41 m2

EXCLUDED AREAS: UTILITY: 37 sq. ft, 3 m2

WALLS: 87 sq. ft, 9 m2



Whilst Every Attempt Has Been Made To Ensure The Accuracy Of The Floorplan Contained Here, No Responsibility Is Taken For Any Error, Omission Or Mis-statement. This Plan Is For Illustrative Purposes Only And Should Be Used As Such By Any Prospective Purchaser.

EPC Summary

Score	Energy rating	Current	Potential
92+	A		
81-91	B		84 B
69-80	C		
55-68	D	66 D	
39-54	E		
21-38	F		
1-20	G		

Additional Information

These particulars are thought to be materially correct though their accuracy is not guaranteed and they do not form part of any contract. All measurements are approximate and we have not tested any fitted appliances, electrical or plumbing installation or central heating systems. Floor plans are for illustration purposes only and their accuracy is not guaranteed.