



Brook Grove, Knowsley, Prescott, L34 4AS

- Stunning Three Bedroom Detached Property
- Well-Proportioned & Immaculately Finished
- Modern Kitchen Diner & Ground Floor WC
- Ensuite To Master & Family Bathroom Suite
- Located In Highly Popular Area Of Knowsley
- Entrance Hall & Welcoming Family Lounge
- Three Bright & Spacious Double Bedrooms
- Delightful Rear Garden & Off-Road Parking



£300,000



















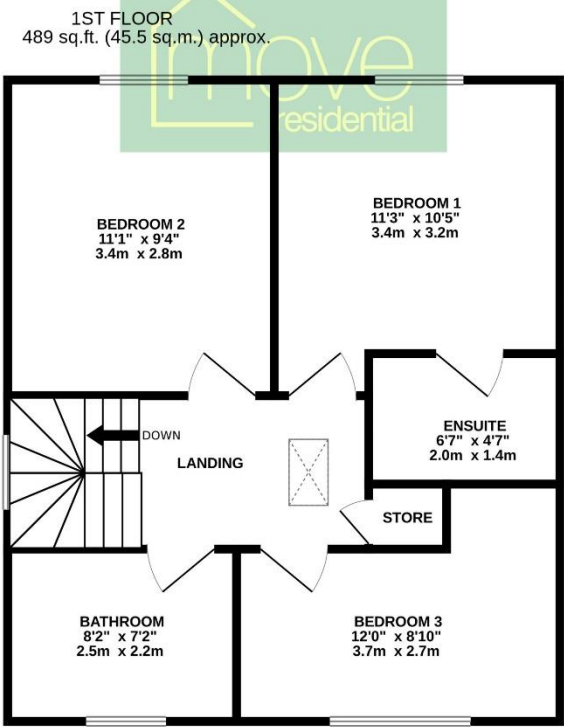
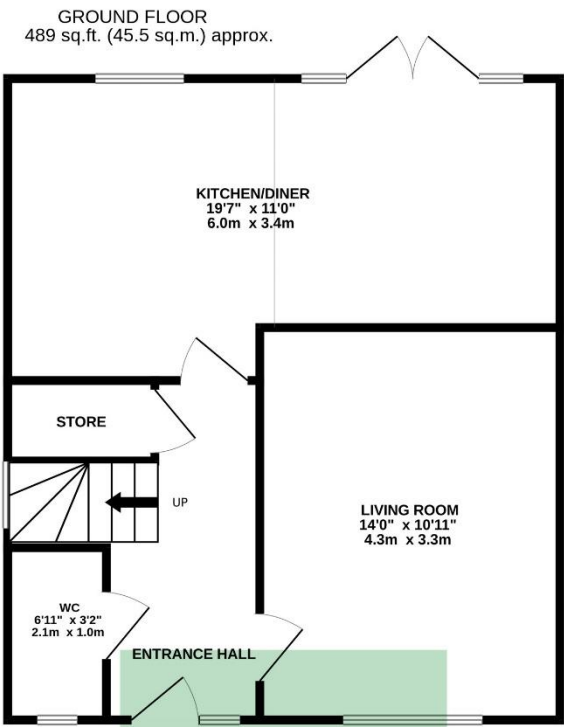
Description

Located on Brook Grove in the highly favoured residential area of Knowsley, L34, is this stunning three bedroom detached home, welcomed to the sales market by appointed agents Move Residential. Boasting an attractive modern frontage with spacious and immaculately presented accommodation within, this promises to make a wonderful future home for a growing family. An inviting entrance hall greets you into the property, leading through to bright and spacious family lounge. Finished in a tasteful décor featuring plush carpeting and stylish wall panelling, this presents a welcoming space to relax and unwind. Following this is a substantial open plan kitchen diner which is certain to impress, complete with a range of sleek fitted base and wall units, complementary worktops providing plentiful surface space and a selection of integrated appliances. There is ample room to accommodate a dining table ideally located in front of French doors which offer views and access out to the rear garden, presenting a delightful social setting for cooking in company and enjoying family mealtimes. Concluding the ground floor is a convenient WC. Ascending to the first floor you will discover three well-proportioned and impeccably presented bedrooms, each receiving plenty of daylight. The master further enjoys the added luxury of a deluxe ensuite shower room, and concluding the interior of this fabulous home is a contemporary style three-piece family bathroom suite. Externally, the property further benefits from a meticulously landscaped rear garden which provides a fantastic outdoor space for the whole household to enjoy. A neatly maintained lawn offers ample room for recreational activities, whilst a smartly flagged patio area presents the perfect spot for al-fresco dining and entertaining. To the front, a driveway provides off-road parking.

Location

Prescot is a town and civil parish, within the Metropolitan Borough of Knowsley in Merseyside, England. Historically part of Lancashire, it lies approximately eight miles to the east of Liverpool city centre. Easy access to the city centre includes the train station and motorways. Local amenities include shops, supermarkets and bus routes.

Floor Plan



TOTAL FLOOR AREA : 978 sq.ft. (90.9 sq.m.) approx.

Whilst every attempt has been made to ensure the accuracy of the floorplan contained here, measurements of doors, windows, rooms and any other items are approximate and no responsibility is taken for any error, omission or mis-statement. This plan is for illustrative purposes only and should be used as such by any prospective purchaser. The services, systems and appliances shown have not been tested and no guarantee as to their operability or efficiency can be given.

Made with Metropix ©2025

EPC Summary

Score	Energy rating	Current	Potential
92+	A		95 A
81-91	B	84 B	
69-80	C		
55-68	D		
39-54	E		
21-38	F		
1-20	G		

Additional Information

These particulars are thought to be materially correct though their accuracy is not guaranteed and they do not form part of any contract. All measurements are approximate and we have not tested any fitted appliances, electrical or plumbing installation or central heating systems. Floor plans are for illustration purposes only and their accuracy is not guaranteed.