



## Gorsewood Road, Gateacre, Liverpool, L25 2QN

- Fantastic Three Bedroom Terrace Property
- Generously Proportioned & Well-Presented
- Two Spacious Double Rooms & Large Single
- Paved Garden to Rear & Off-Road Parking
- Located in the Residential Area of Gateacre
- Entrance, Two Reception Rooms & Kitchen
- Contemporary Style Three-Piece Bathroom
- Brilliant Opportunity for First Time Buyers



£200,000



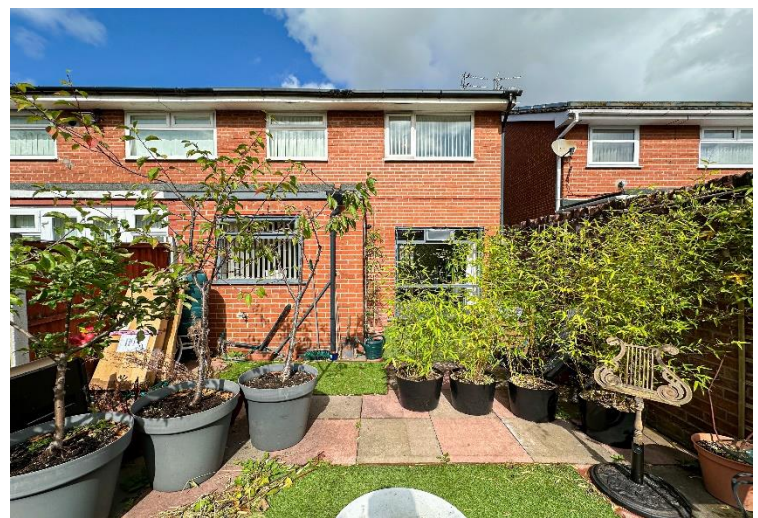














## **Description**

Move Residential are delighted to introduce to the sales market this fantastic three bedroom end terrace home, located on Gorsewood Road in the highly favoured residential area of Gateacre, L25. Offering spacious and well-presented accommodation throughout, this promises to make an ideal purchase for growing families or first-time buyers looking to get on the property ladder. Following through the inviting entrance hall, you are led into a bright and spacious front reception room which has been accommodated by a garage conversion. Double doors lead through to a second substantial reception room which enjoys a floor to ceiling window providing views out to the garden and flooding the space with natural light. Completing the ground floor is a modern kitchen complete with a range of stylish fitted base and wall units and complementary worktops providing plentiful surface space. Continuing to the first floor you will find two generously sized double bedrooms and a well-proportioned single room, each finished to an excellent standard and receiving plenty of daylight. Completing the interior of this lovely home is a contemporary style three-piece family bathroom suite featuring attractive subway tiles to the walls. Externally, the property further benefits from a charming paved rear garden which offers an idyllic spot for enjoying al-fresco dining during the warmer months. To the front, a sizable driveway provides off-road parking for two vehicles.

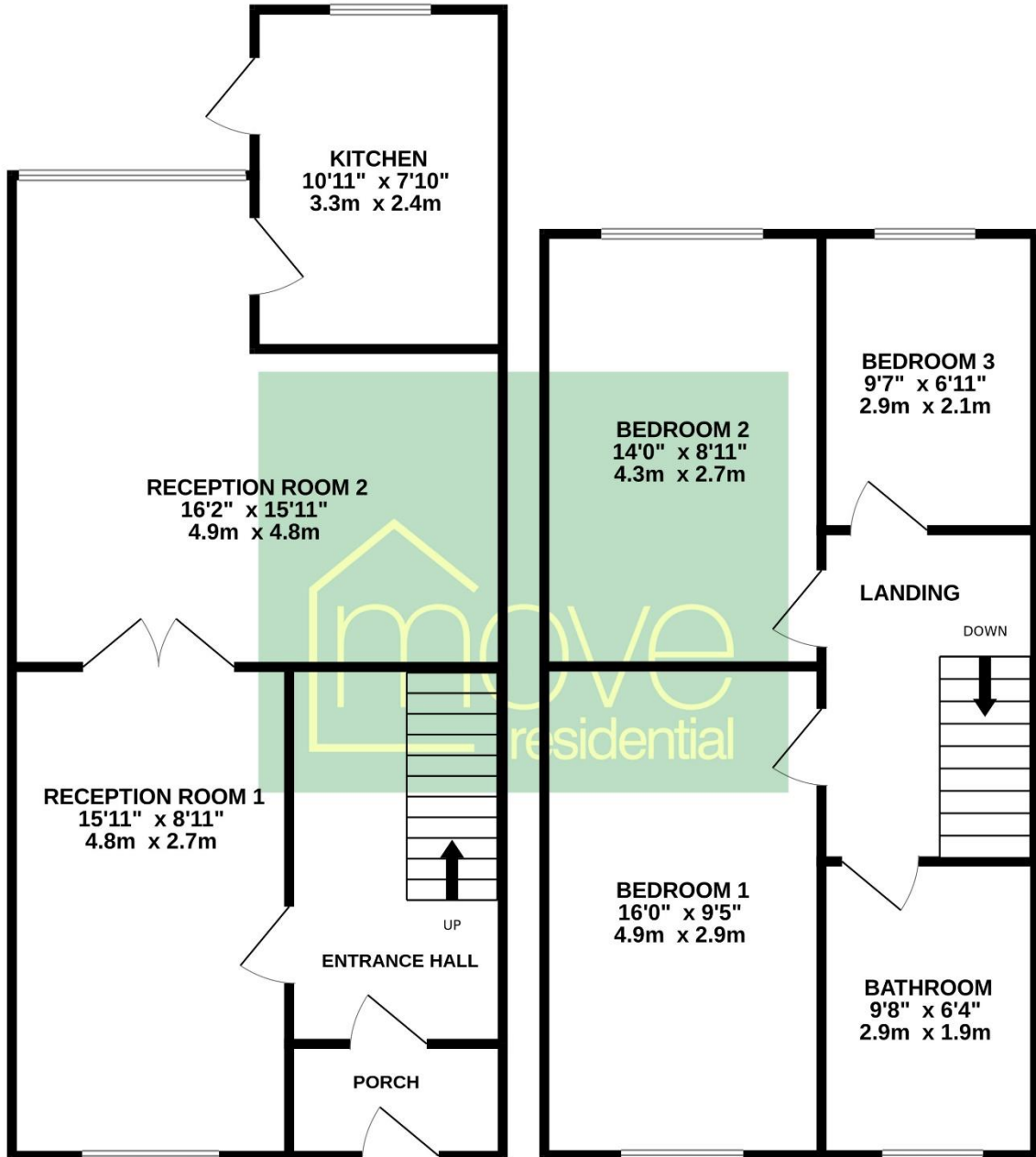
## **Location**

Gorswood Road is situated off Redwood Road, within the popular residential location of Gateacre, L25. The property is in the vicinity of local facilities and amenities in Gateacre Village and Woolton Village including a range of local shops, supermarkets, bars, restaurants, parks and local cinema. There are transport links available both in and out of the city centre via road and rail links. Recreational facilities are available within the surrounding area including local Golf Courses, Calderstones Park and Woolton Park.

# Floor Plan

**GROUND FLOOR**  
554 sq.ft. (51.5 sq.m.) approx.

**1ST FLOOR**  
480 sq.ft. (44.6 sq.m.) approx.



TOTAL FLOOR AREA : 1034 sq.ft. (96.1 sq.m.) approx.

Whilst every attempt has been made to ensure the accuracy of the floorplan contained here, measurements of doors, windows, rooms and any other items are approximate and no responsibility is taken for any error, omission or mis-statement. This plan is for illustrative purposes only and should be used as such by any prospective purchaser. The services, systems and appliances shown have not been tested and no guarantee as to their operability or efficiency can be given.

Made with Metropix ©2024

## **EPC Summary**

Awaiting Image.

### **Additional Information**

These particulars are thought to be materially correct though their accuracy is not guaranteed and they do not form part of any contract. All measurements are approximate and we have not tested any fitted appliances, electrical or plumbing installation or central heating systems. Floor plans are for illustration purposes only and their accuracy is not guaranteed.