



Heysham Lawn, Netherley, L27 5RQ

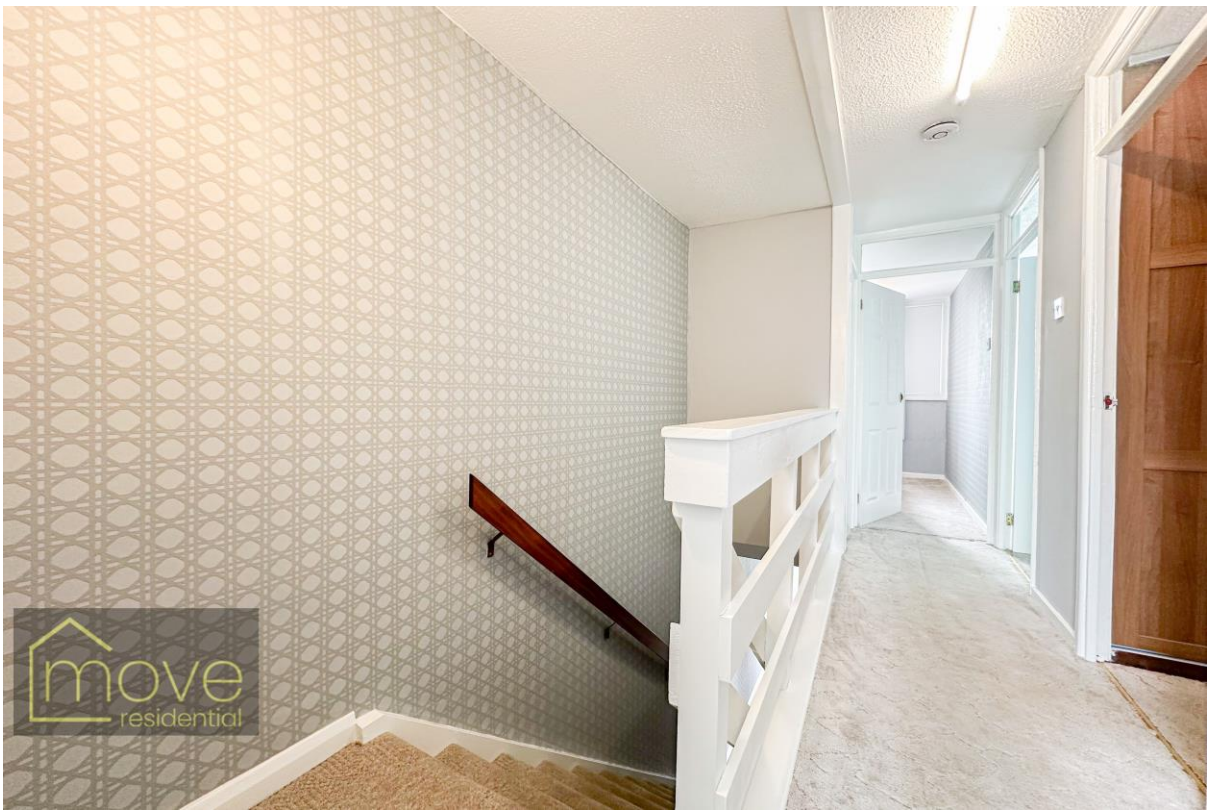
- Delightful Three Bedroom Mid Terrace Property
- Generously Sized & Well Presented Throughout
- Two Double Bedrooms & Spacious Single Room
- Large Paved Garden to Rear & Off-Road Parking
- Located in Popular Residential Area of Netherley
- Entrance Hall, Lounge & Modern Kitchen Diner
- Contemporary Style Three Piece Bathroom Suite
- A Fantastic Opportunity for First Time Buyers



£140,000















Description

This delightful three bedroom mid terrace home, located in the popular residential area of Netherley, L27, is presented to the sales market by appointed agents, Move Residential. Situated on Heysham Lawn, this modern property offers spacious and beautifully presented living accommodation throughout, making this an opportunity not to be missed for first time buyers looking to get on the property ladder. Following through the inviting entrance hall, you are led into a bright and welcoming family lounge, finished in a tasteful pastel décor with plush carpeting, presenting the ideal space to relax with family and friends. This flows seamlessly into a modern kitchen diner, complete with a range of stylish fitted base and wall units and plentiful surface space. There is ample room for a dining table ideally positioned in front of french doors which offer views and access out to the rear garden, providing the perfect setting for enjoying mealtimes. Continuing to the first floor, you will find two generously sized double bedrooms and a well-proportioned single room, all finished to a high standard, and concluding the interior of the property is a contemporary style three piece family bathroom suite. Externally, there is a low maintenance paved rear garden presenting the ideal spot for enjoying al-fresco dining and soaking up the sun during the warmer months, and off-road parking is available. The property further benefits from a new boiler installed within the last few years, which has been maintained annually, along with a newly installed front door, and new windows to many of the rooms.

Location

The property is situated within a quiet residential area in Netherley and is within easy access of local amenities, local schools and recreational facilities. Netherley Park and Woodlands Park are both nearby. Further shopping amenities are available at nearby Gateacre Village and Woolton Village. The property has easy access to local public transport links and major road networks.

EPC

Score	Energy rating	Current	Potential
92+	A		
81-91	B		86 B
69-80	C		
55-68	D	55 D	
39-54	E		
21-38	F		
1-20	G		

Floor Plan

Awaiting Image.

Additional Information

These particulars are thought to be materially correct though their accuracy is not guaranteed and they do not form part of any contract. All measurements are approximate and we have not tested any fitted appliances, electrical or plumbing installation or central heating systems. Floor plans are for illustration purposes only and their accuracy is not guaranteed.