



Alderfield Drive, Speke, L24 6TA

- Brilliant Two Bedroom End Terrace Property
- Well-Maintained & Presented Throughout
- Generously Sized Open Plan Kitchen Diner
- Lovely Garden to Rear, Driveway & Garage
- Located in Popular Residential Area of Speke
- Entrance Hall & Spacious Reception Room
- Two Double Bedrooms & Bathroom Suite
- No Onward Chain-Ideal for First Time Buyers



£130,000











Description

Move Residential are thrilled to offer for sale this brilliant two bedroom end terrace home, located on Alderfield Drive in the highly favoured residential area of Speke, L24. Available with no onward chain, this spacious and well-maintained house promises to make an ideal purchase for first time buyers looking to get on the property ladder. Following through an inviting entrance hall, you are led into a bright and spacious bay fronted reception room, finished in a neutral décor with attractive wood-style laminate flooring, and boasting a feature fireplace. This flows seamlessly into an open plan kitchen diner which provides the perfect setting for enjoying mealtimes and entertaining guests. The kitchen is complete with a range of modern fitted base and wall units, plentiful worktop space and tiled splashbacks. There is ample room for a substantial dining table ideally positioned in front of french doors which offer views and access out to the rear garden, flooding the space with natural light. Ascending to the first floor, you will find two generously sized and well-presented double bedrooms, along with a contemporary style three-piece family bathroom suite. Externally, there is a lovely rear garden made up of both a lawn and patio area, and to the front is a driveway providing off-road parking for two vehicles, as well as a garage accommodating additional storage space.

Location

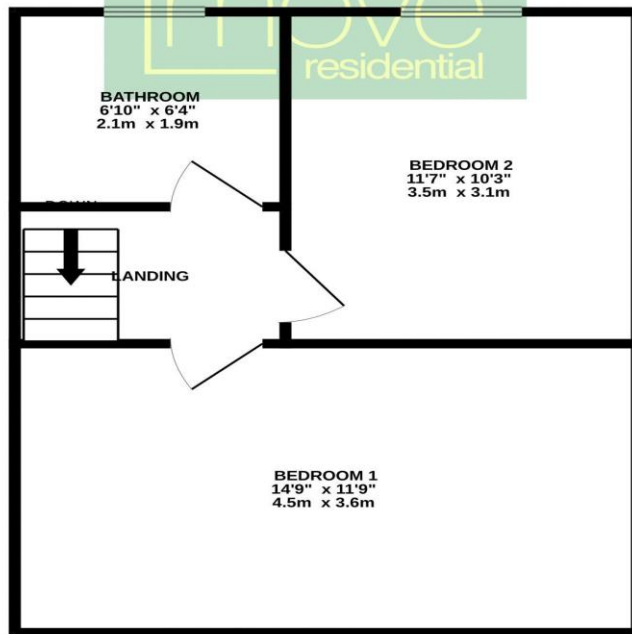
Speke is one of Liverpool's success stories. Once one of the most deprived areas in the country, it now boasts the successful and expanding John Lennon international airport, a bustling retail park, home to some of the biggest retail chains in the UK including M&S, B&Q and Next, a Crown Plaza hotel in the beautifully restored Art Deco former airport building and, as ever, the 500 year old, National Trust owned Tudor manor house of Speke Hall. Features of the area which were once used as examples of its decline, such as the closed Bryant and May match factory, are now pointed out as symbols of its regeneration due to the award winning Urban Splash redevelopment of this landmark building. Located close to the City boundary with Knowsley, Speke offers an alternative shopping and living experience while still enabling access to the City centre in a short time. Housing is largely traditional terraced property with smaller detached and semi detached homes within the newer estates and give buyers a 'value for money' option in a rapidly improving location.

Floor Plan

GROUND FLOOR
374 sq.ft. (34.7 sq.m.) approx.



1ST FLOOR
365 sq.ft. (33.9 sq.m.) approx.



TOTAL FLOOR AREA : 739 sq.ft. (68.6 sq.m.) approx.

Whilst every attempt has been made to ensure the accuracy of the floorplan contained here, measurements of doors, windows, rooms and any other items are approximate and no responsibility is taken for any error, omission or mis-statement. This plan is for illustrative purposes only and should be used as such by any prospective purchaser. The services, systems and appliances shown have not been tested and no guarantee as to their operability or efficiency can be given.
Made with Metropix ©2024

EPC

Score	Energy rating	Current	Potential
92+	A		
81-91	B		88 B
69-80	C	70 C	
55-68	D		
39-54	E		
21-38	F		
1-20	G		

Additional Information

These particulars are thought to be materially correct though their accuracy is not guaranteed and they do not form part of any contract. All measurements are approximate and we have not tested any fitted appliances, electrical or plumbing installation or central heating systems. Floor plans are for illustration purposes only and their accuracy is not guaranteed.